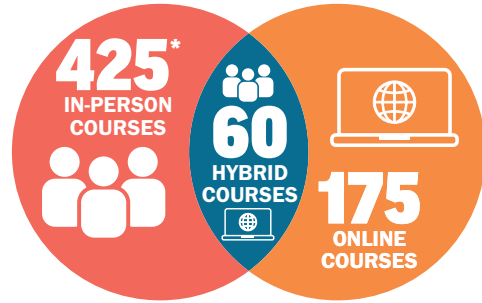


CAMPUS REOPENING



ALL CAMPUS FACILITIES ARE READY TO WELCOME BACK STUDENTS FOR THE START OF CLASSES ON AUGUST 24

COURSE DELIVERY



**As of 8/24/2020 Thanksgiving break in-person courses transition to virtual until December 11th the end of the Fall term.*

MUSTANG ATHLETICS

92
ATHLETES

COMPETITIONS MOVED TO SPRING 2021 BY NJCAA GUIDELINES



23
WOMEN'S SOCCER

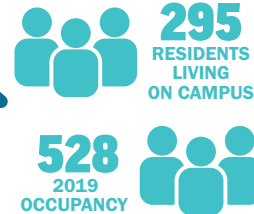
14
VOLLEYBALL

25
WRESTLING

15
WOMEN'S BASKETBALL

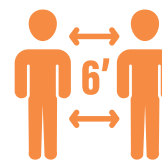
15
MEN'S BASKETBALL

HOUSING



INCREASED SAFETY MEASURES

19
CUSTODIAL STAFF



76
SOCIALLY DISTANCED CLASSROOMS SANITIZED AFTER EACH USE

100+
HAND SANITIZING STATIONS



3000+
DISPOSABLE FACE COVERINGS PURCHASED



500+
N95 FACE MASKS FOR STUDENTS REQUIRED TO BE IN A CLINICAL OR LAB SETTING

500+
500 FACE COVERINGS AVAILABLE AT WWCC BOOKSTORE

ENHANCED INSTRUCTIONAL SUPPORT



78+
IPADS

70+
ROBOTIC DEVICE MOUNTS FOR FULL-TIME FACULTY TO ENHANCE VIRTUAL INSTRUCTION

20+
INSTRUCTIONAL SUPPORT TRAINING SESSIONS



VIRTUAL DESKTOP INFRASTRUCTURE CREATED FOR COURSES REQUIRING SPECIALIZED SOFTWARE PROGRAMS



MOVING FORWARD – REOPENING OF CAMPUS FOR 2020-2021

PHASED REOPENING PLAN HIGHLIGHTS



Western will follow guidelines from Centers for Disease Control (CDC) and Prevention, Sweetwater County Health Officers, and the Wyoming State Health Officer directives.



All members of the College campus community must wear face coverings and maintain six feet when on campus and in outreach buildings including in classrooms.



Western facilities will be cleaned and sanitized via CDC guidelines. High-traffic areas will be cleaned on a regular basis.



Official communication through the College is accomplished through the Western email system, MyWestern portal, and westernwyoming.edu/C19.



Faculty and staff are encouraged to read through the Phased Reopening Plan available on the MyWestern Portal - COVID-19 Internal Communications.



Starting July 20, 2020, Western will begin a phased return to work for some employees with all faculty and staff working from campus by August 17. Students will fully return on August 24.



Students are advised to check their course schedule and Western email regularly, with the addition of the J Block, classroom changes, and in-person classes transitioning to virtual after Thanksgiving.



The COVID-19 Self Reporting Form is on the MyWestern Portal.



All Campus community members are encouraged to be proactive and self-monitor for COVID-19 symptoms before visiting campus.



Events on campus that are open to the public must follow state capacity guidelines. Streaming options are highly recommended since these can change weekly. Current state guidelines permit 250 people outdoors and 50 people indoors, regardless of social distancing measures.