

Wyoming Community College Commission

Commissioners

Mr. Gregg Blikre, Gillette
Mr. Dennis Boal, Evanston
Ms. Katherine Dooley, Powell
Dr. Craig Frederick, Guernsey
Dr. Jackie Freeze, Rock Springs
Ms. Julia Newman, Torrington
Ms. Ember Oakley, Riverton

Ex-officios

Governor Mark Gordon
State Superintendent Jillian Balow
Executive Director
Dr. Sandra Caldwell
Phone: 307-777-7763
Fax: 307-777-6567
www.communitycolleges.wy.edu

2300 Capitol Avenue, 5th Floor - Suite B, Cheyenne, Wyoming 82002



WYOMING
COMMUNITY COLLEGES

Wyoming Community College System
Fall 2019
Term Enrollment Report

Casper College ~ Central Wyoming College ~ Eastern Wyoming College
Laramie County Community College ~ Northwest College
Northern Wyoming Community College District
Western Wyoming Community College

WYOMING COMMUNITY COLLEGE SYSTEM
FALL 2019 ENROLLMENT REPORT

This report provides a look at the Fall 2019 term enrollment in categories such as student load, location and demographics of the community college student population. The content and format of this report have been developed through a collaborative effort between the Wyoming Community College Commission (WCCC), the Executive Council and the Data Governance/Institutional Research Council members representing the seven community colleges.

Effective with the summer 2016 reporting term, data were extracted from the Central Station Instance (CSI) using one report rather than consolidating individual customized reports from all seven colleges. All enrollment reports have the foundation of:

- Student enrollment being counted the day after 12% of each course has been completed.
- "Full-time equivalency means the number of approved academic or vocational-technical credit hours for each class for which students are enrolled divided by twelve (12)". W.S. 21-18-102 (a)(xii).
- Student headcount includes students who are enrolled for a letter grade, pass/fail designation as well as those who are auditing a course.
- "Duplicated headcount" means that within a survey or polling exercise of numerous programs and/or courses, a student may be counted more than once". WCCC Rules-2015
- "Unduplicated headcount" means that within a survey or polling exercise of numerous programs and/or courses, a student shall be counted only once". WCCC Rules- 2015
- "Concurrent enrollment course" means a college course taught by high school faculty who have been approved as community college adjunct faculty and who are teaching said course as part of their duties as a school district employee. As such, these college courses simultaneously satisfy high school graduation requirements. These courses have been approved by the community college as having equivalent course content, learning objectives and work assignments as an existing college course. Course content and learning objectives are equivalent to the related community college course as determined and defined by community college faculty. WCCC Rules- 2017
- "Dual enrollment credit" means credit given to qualified high school students who complete college level courses for which the community college hires and pays the instructor and in which the school district agrees to allow high school graduation credit. WCCC Rules- 2017

*Full-time equivalencies (FTE) reported in tables 1, 5, 7b, 8 and 10 may vary slightly due to rounding in the enrollment calculations.

**The data presented in this report may vary from enrollment reports posted on Wyoming college websites due to extraction date and sub-set parameter differences.

For additional information and discussion regarding this report, please refer to the Wyoming Community College Commission's meeting minutes for April 16, 2020 located on the Commission's website at <http://communitycolleges.wy.edu>.



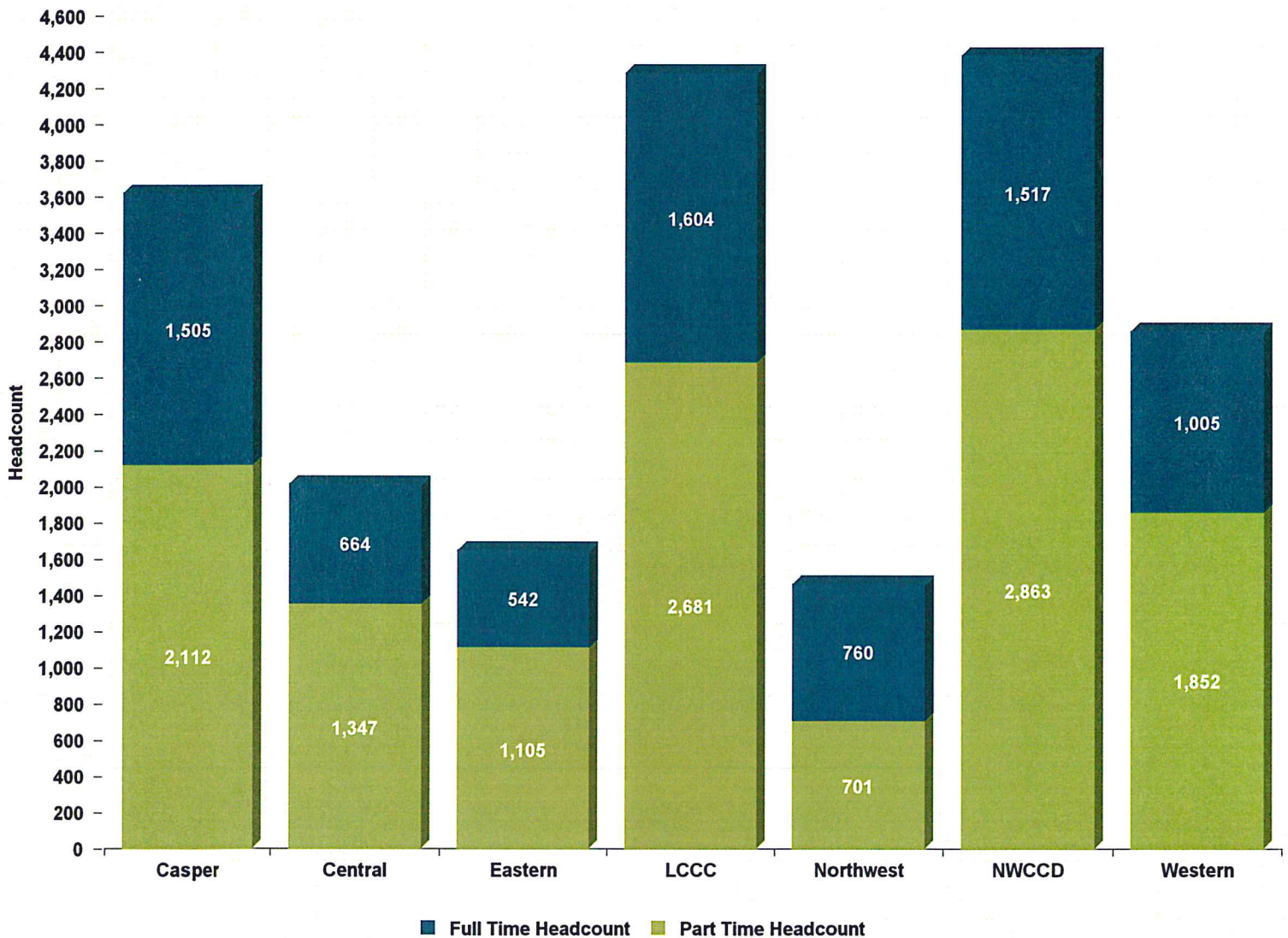
FALL '19 ENROLLMENT REPORT

Table 1: Credit Headcount & FTE

College	CREDIT HEADCOUNT			
	Full Time	Part Time	Total	%
Casper	1,505	2,112	3,617	17.9%
Central	664	1,347	2,011	9.9%
Eastern	542	1,105	1,647	8.1%
LCCC	1,604	2,681	4,285	21.2%
Northwest	760	701	1,461	7.2%
NWCCD	1,517	2,863	4,380	21.6%
Western	1,005	1,852	2,857	14.1%
Total	7,597	12,661	20,258	100.0%
Percent	37.5%	62.5%	100.0%	

College	CREDIT FTE			
	Full Time	Part Time	Total	%
Casper	1,835.2	970.3	2,805.6	19.4%
Central	810.5	573.9	1,384.4	9.6%
Eastern	707.1	422.2	1,129.3	7.8%
LCCC	1,915.2	1,138.4	3,053.6	21.1%
Northwest	955.3	312.0	1,267.2	8.8%
NWCCD	1,865.6	965.5	2,831.0	19.6%
Western	1,280.7	695.7	1,976.5	13.7%
Total	9,369.6	5,078.0	14,447.6	100.0%
Percent	64.9%	35.1%	100.0%	

Source: Wyoming Community College Commission





FALL '19 ENROLLMENT REPORT

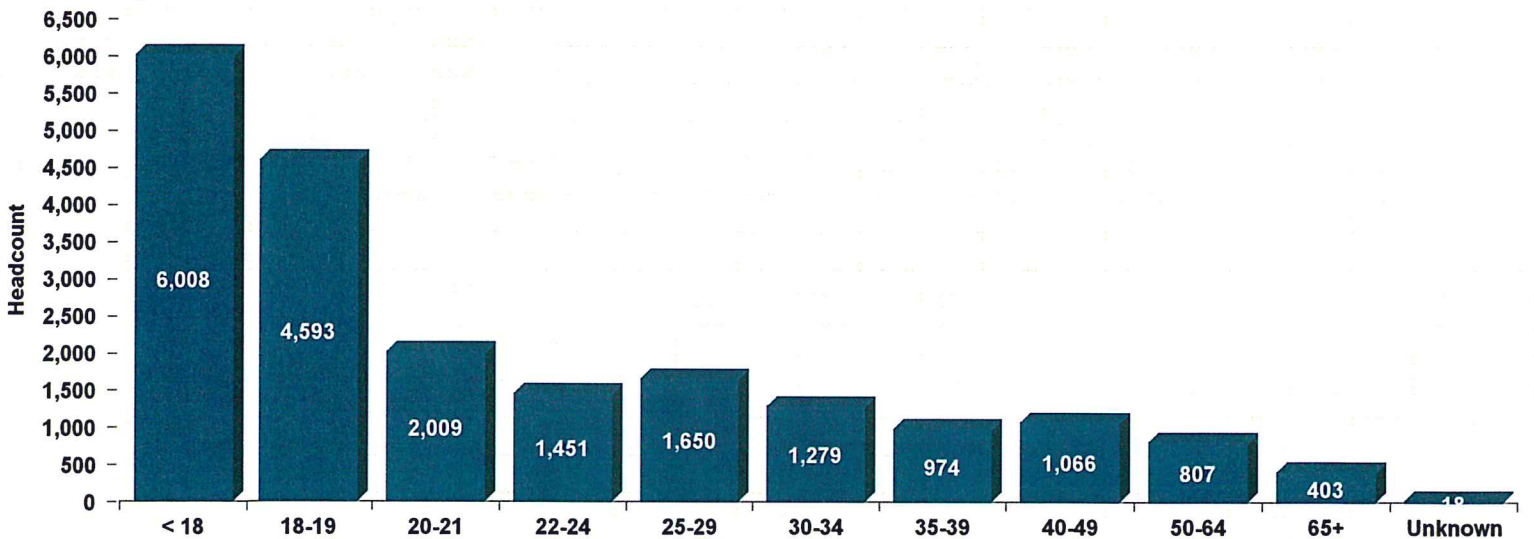
Table 2: Credit Headcount by Age

College	< 18	18-19	20-21	22-24	25-29	30-34	35-39	40-49	50-64	65+	Unknown	TOTAL
Casper	706	867	467	370	375	267	184	183	102	95	1	3,617
Central	789	369	121	138	150	131	88	109	78	38	0	2,011
Eastern	758	333	95	55	83	72	62	70	60	57	2	1,647
LCCC	1,167	988	495	394	419	273	172	182	114	80	1	4,285
Northwest	336	469	199	99	122	70	50	59	35	22	0	1,461
NWCCD	1,288	941	357	224	295	306	275	293	316	75	10	4,380
Western	964	626	275	171	206	160	143	170	102	36	4	2,857
Total	6,008	4,593	2,009	1,451	1,650	1,279	974	1,066	807	403	18	20,258
Percent	29.7%	22.7%	9.9%	7.2%	8.1%	6.3%	4.8%	5.3%	4.0%	2.0%	0.1%	100.0%

Average Age	Casper	Central	Eastern	LCCC	Northwest	NWCCD	Western	Systemwide
Female	25.5	24.3	22.7	24.4	23.9	23.4	23.9	24.2
Male	25.0	23.6	25.1	23.4	22.3	28.7	24.3	25.3
Full Time	22.4	21.5	21.2	23.0	21.2	21.4	21.4	21.9
Part Time	27.3	25.3	25.0	24.6	25.6	28.8	25.5	26.3
Total	25.3	24.0	23.7	24.0	23.3	26.3	24.1	24.6

Median Age	Casper	Central	Eastern	LCCC	Northwest	NWCCD	Western	Systemwide
Female	20	18	18	20	19	19	19	19
Male	20	19	18	19	19	20	19	19
Full Time	19	19	19	19	19	19	19	19
Part Time	22	18	17	19	20	22	18	20
Total	20	18	18	19	19	19	19	19

Students with unreported birth dates are excluded. The male and female statistics exclude students with unreported gender.
 Source: Wyoming Community College Commission



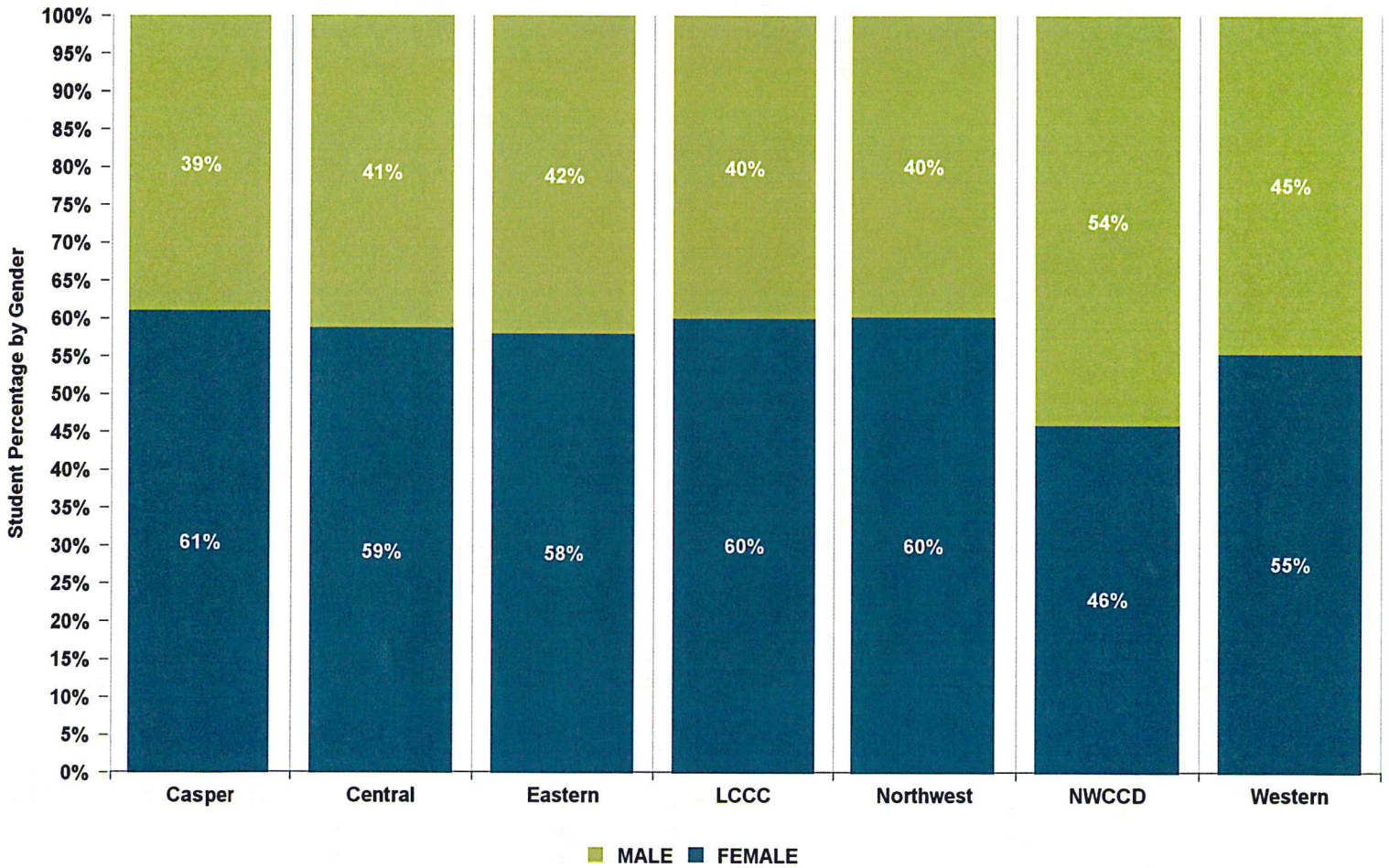


FALL '19 ENROLLMENT REPORT

Table 3: Credit Headcount by Gender

College	FALL				TOTAL
	Male	% Male	Female	% Female	
Casper	1,410	39.0%	2,204	60.9%	3,617
Central	830	41.3%	1,180	58.7%	2,011
Eastern	693	42.1%	954	57.9%	1,647
LCCC	1,716	40.0%	2,568	59.9%	4,285
Northwest	581	39.8%	879	60.2%	1,461
NWCCD	2,373	54.2%	2,007	45.8%	4,380
Western	1,279	44.8%	1,578	55.2%	2,857
Total	8,882	43.8%	11,370	56.1%	20,258

These data do not reflect those not reported as male or female.
 Source: Wyoming Community College Commission





FALL '19 ENROLLMENT REPORT

Table 4: Credit Headcount by Residency

County	Casper	Central	Eastern	LCCC	Northwest	NWCCD	Western	Total	% of In-State	County Pop.**	****Credit Students as % of Pop.
Albany	40	10	13	<u>603</u>	4	13	5	688	3.8%	38,680	1.8%
Big Horn	25	5	3	5	<u>299</u>	28	2	367	2.1%	12,040	3.0%
Campbell	63	4	18	30	13	<u>1,997</u>	3	2,128	11.9%	48,890	4.4%
Carbon	60	18	7	43	5	12	<u>159</u>	304	1.7%	15,730	1.9%
Converse	146	12	<u>300</u>	8	3	27	0	496	2.8%	14,280	3.5%
Crook	16	2	<u>143</u>	2	2	110	1	276	1.5%	7,560	3.7%
Fremont	95	<u>1,075</u>	10	25	5	22	7	1,239	6.9%	40,000	3.1%
Goshen	22	2	<u>454</u>	58	3	2	2	543	3.0%	13,330	4.1%
Hot Springs	21	<u>93</u>	3	3	12	6	0	138	0.8%	4,640	3.0%
Johnson	16	3	4	10	5	<u>282</u>	0	320	1.8%	8,450	3.8%
Laramie	78	18	45	<u>2,769</u>	5	36	5	2,956	16.5%	99,650	3.0%
Lincoln	18	31	3	9	5	4	<u>267</u>	337	1.9%	19,540	1.7%
Natrona	<u>2,421</u>	19	36	25	6	59	11	2,577	14.4%	81,800	3.2%
Niobrara	14	3	<u>36</u>	4	2	8	3	70	0.4%	2,460	2.8%
Park	23	9	7	13	<u>665</u>	41	5	763	4.3%	29,590	2.6%
Platte	48	3	<u>129</u>	31	0	8	2	221	1.2%	8,730	2.5%
Sheridan	33	8	4	12	4	<u>1,069</u>	0	1,130	6.3%	30,590	3.7%
Sublette	19	11	4	4	9	6	<u>134</u>	187	1.0%	9,630	1.9%
Sweetwater	35	16	9	18	8	13	<u>1,551</u>	1,650	9.2%	43,830	3.8%
Teton	22	<u>351</u>	3	17	0	6	9	408	2.3%	23,740	1.7%
Uinta	22	30	4	9	5	8	<u>461</u>	539	3.0%	20,640	2.6%
Unknown	1	75	0	6	0	0	0	82	0.5%	n/a	n/a
Washakie	24	12	2	9	<u>78</u>	42	1	168	0.9%	8,160	2.1%
Weston	22	1	<u>199</u>	8	2	59	3	294	1.6%	7,290	4.0%
In Tax District	2,421	1,075	454	2,769	665	1,069	1,551	10,004			
In Service Area ***	0	444	807	603	377	2,279	1,021	5,531			
Out of Service Area	863	292	175	349	98	510	59	2,346			
Total In-State	3,284	1,811	1,436	3,721	1,140	3,858	2,631	17,881			
Border States *	166	97	152	396	164	357	132	1,464			
All Other States	133	89	32	142	88	133	49	666			
International	34	14	27	26	69	32	45	247			
Total	3,617	2,011	1,647	4,285	1,461	4,380	2,857	20,258			
% In Tax District	66.9%	53.5%	27.6%	64.6%	45.5%	24.4%	54.3%	49.4%			
% In Service Area	0.0%	22.1%	49.0%	14.1%	25.8%	52.0%	35.7%	27.3%			
% Out of Service Area	23.9%	14.5%	10.6%	8.1%	6.7%	11.6%	2.1%	11.6%			
% In-State	90.8%	90.1%	87.2%	86.8%	78.0%	88.1%	92.1%	88.3%			
% Border States *	4.6%	4.8%	9.2%	9.2%	11.2%	8.2%	4.6%	7.2%			
% All Other States	3.7%	4.4%	1.9%	3.3%	6.0%	3.0%	1.7%	3.3%			
% International	0.9%	0.7%	1.6%	0.6%	4.7%	0.7%	1.6%	1.2%			

* Border states include Colorado, Utah, Idaho, Montana, South Dakota, and Nebraska.

** Wyoming Department of Administration and Information, Economic Analysis Division Estimate <http://eadiv.state.wy.us/pop/wyc&sc40.htm>

*** Casper is the only college with one service area.

**** Total In-State Credit Students as % of Population: 3.0%

BOLD:
College Location
BLUE:
College Service Area

Source: Wyoming Community College Commission



FALL '19 ENROLLMENT REPORT

Table 5: Credit FTE by Residency

WY County	Casper	Central	Eastern	LCCC	Northwest	NWCCD	Western	Total
Albany	29.0	7.8	11.1	<u>383.7</u>	2.1	14.2	2.3	450.1
Big Horn	23.3	4.5	4.8	3.7	<u>227.2</u>	26.2	0.6	290.3
Campbell	60.1	3.1	18.5	25.8	12.2	<u>1,059.7</u>	0.8	1,180.2
Carbon	54.4	12.7	9.3	46.1	6.9	13.4	<u>82.0</u>	224.7
Converse	127.8	6.9	<u>189.1</u>	6.2	3.3	11.8	0.0	345.2
Crook	16.5	0.6	<u>80.5</u>	2.1	2.5	63.4	0.3	165.8
Fremont	84.8	<u>754.8</u>	9.8	17.4	5.2	25.9	2.2	900.3
Goshen	20.4	1.6	<u>257.8</u>	38.0	3.8	0.4	0.5	322.4
Hot Springs	19.6	<u>65.5</u>	3.4	2.3	12.0	4.9	0.0	107.6
Johnson	11.0	2.8	4.0	9.0	5.8	<u>190.9</u>	0.0	223.5
Laramie	53.7	8.6	52.9	<u>1,852.1</u>	4.5	18.0	3.6	1,993.4
Lincoln	15.6	19.2	2.8	8.6	4.3	5.4	<u>144.1</u>	199.9
Natrona	<u>1,725.0</u>	8.1	31.6	20.4	2.7	42.8	5.0	1,835.5
Niobrara	15.7	4.1	<u>15.3</u>	3.6	3.2	6.5	1.1	49.5
Park	20.5	9.3	4.8	8.8	<u>515.1</u>	24.1	2.2	584.8
Platte	44.1	1.9	<u>61.4</u>	26.8	0.0	5.5	2.3	142.1
Sheridan	23.9	3.3	3.8	7.3	2.8	<u>696.7</u>	0.0	737.9
Sublette	20.9	5.8	5.7	4.2	8.8	5.1	<u>80.0</u>	130.4
Sweetwater	24.4	17.3	10.1	14.5	8.1	13.0	<u>1,093.1</u>	1,180.4
Teton	18.2	<u>175.7</u>	4.5	14.8	0.0	3.6	6.7	223.4
Uinta	19.9	21.8	5.0	9.0	3.9	8.7	<u>287.4</u>	355.6
Unknown	0.3	63.5	0.0	4.8	0.0	0.0	0.0	68.5
Washakie	22.7	10.0	2.7	7.3	<u>46.9</u>	51.3	0.3	141.3
Weston	21.4	0.8	<u>85.3</u>	5.5	1.8	31.0	3.0	148.8
In Tax District	1,725.0	754.8	257.8	1,852.1	515.1	696.7	1,093.1	6,894.6
In Service Area **	0.0	241.2	431.6	383.7	274.1	1,250.6	593.4	3,174.6
Out of Service Area	748.4	213.7	184.7	286.0	93.9	375.2	30.7	1,932.6
Total In-State	2,473.4	1,209.7	874.0	2,521.8	883.1	2,322.5	1,717.3	12,001.7
Border States *	171.14	85.67	190.08	387.62	195.54	358.26	149.5	1,537.82
All Other States	118.5	69.4	31.9	108.8	99.6	111.5	53.3	593.0
International	42.5	19.6	33.3	35.3	89.0	38.9	56.4	315.0
Total	2,805.6	1,384.4	1,129.3	3,053.6	1,267.2	2,831.0	1,976.5	14,447.6
% In Tax District	61.5%	54.5%	22.8%	60.7%	40.7%	24.6%	55.3%	47.7%
% In Service Area	0.0%	17.4%	38.2%	12.6%	21.6%	44.2%	30.0%	22.0%
% Out of Service Area	26.7%	15.4%	16.4%	9.4%	7.4%	13.3%	1.6%	13.4%
% In-State	88.2%	87.4%	77.4%	82.6%	69.7%	82.0%	86.9%	83.1%
% Border States *	6.1%	6.2%	16.8%	12.7%	15.4%	12.7%	7.6%	10.6%
% All Other States	4.2%	5.0%	2.8%	3.6%	7.9%	3.9%	2.7%	4.1%
% International	1.5%	1.4%	3.0%	1.2%	7.0%	1.4%	2.9%	2.2%

* Border states include Colorado, Utah, Idaho, Montana, South Dakota, and Nebraska.

** Casper is the only college with one service area.

Source: Wyoming Community College Commission



FALL '19 ENROLLMENT REPORT

Table 6A: Headcount by Credit Hours

Credit Hours	Casper	Central	Eastern	LCCC	Northwest	NWCCD	Western	Total	Percent
<1	8	60	2	0	6	710	101	887	4.4%
1	90	52	230	94	24	264	180	934	4.6%
2	79	96	45	71	15	59	85	450	2.2%
3	328	217	232	1,058	213	521	610	3,179	15.7%
Sub Total	505	425	509	1,223	258	1,554	976	5,450	26.9%
4	478	327	136	314	87	336	170	1,848	9.1%
5	186	50	47	46	44	37	30	440	2.2%
6	241	119	100	341	90	176	241	1,308	6.5%
Sub Total	905	496	283	701	221	549	441	3,596	17.8%
7	195	121	107	177	49	271	107	1,027	5.1%
8	150	88	45	104	50	76	70	583	2.9%
9	102	98	74	184	62	137	130	787	3.9%
Sub Total	447	307	226	465	161	484	307	2,397	11.8%
10	174	62	60	225	33	160	80	794	3.9%
11	81	57	27	67	28	116	48	424	2.1%
12	330	114	49	396	128	201	131	1,349	6.7%
Sub Total	585	233	136	688	189	477	259	2,567	12.7%
13	313	135	54	359	107	234	159	1,361	6.7%
14	241	129	91	209	96	362	144	1,272	6.3%
15	178	97	88	202	120	224	132	1,041	5.1%
Sub Total	732	361	233	770	323	820	435	3,674	18.1%
16	147	71	68	215	116	189	152	958	4.7%
17	96	44	64	101	73	170	111	659	3.3%
18	66	30	67	48	50	89	72	422	2.1%
Sub Total	309	145	199	364	239	448	335	2,039	10.1%
19	40	13	20	21	36	24	47	201	1.0%
20	23	9	24	19	21	6	27	129	0.6%
21	35	5	6	7	6	8	13	80	0.4%
Sub Total	98	27	50	47	63	38	87	410	2.0%
>21	36	17	11	27	7	10	17	125	0.6%
Sub Total	36	17	11	27	7	10	17	125	0.6%
Total	3,617	2,011	1,647	4,285	1,461	4,380	2,857	20,258	100.0%

Credit Hour bands are not displayed if there were no students associated with that particular number of credit hours.

Source: Wyoming Community College Commission



FALL '19 ENROLLMENT REPORT

Table 6B: Headcount by Credit Hours

Credit Hours	Casper	Central	Eastern	LCCC	Northwest	NWCCD	Western	Total	Percent
<1	8	60	2	0	6	710	101	887	4.4%
1	90	52	230	94	24	264	180	934	4.6%
2	79	96	45	71	15	59	85	450	2.2%
3	328	217	232	1,058	213	521	610	3,179	15.7%
4	478	327	136	314	87	336	170	1,848	9.1%
5	186	50	47	46	44	37	30	440	2.2%
Sub Total	1,169	802	692	1,583	389	1,927	1,176	7,738	38.2%
6	241	119	100	341	90	176	241	1,308	6.5%
7	195	121	107	177	49	271	107	1,027	5.1%
8	150	88	45	104	50	76	70	583	2.9%
9	102	98	74	184	62	137	130	787	3.9%
10	174	62	60	225	33	160	80	794	3.9%
11	81	57	27	67	28	116	48	424	2.1%
Sub Total	943	545	413	1,098	312	936	676	4,923	24.3%
12	330	114	49	396	128	201	131	1,349	6.7%
13	313	135	54	359	107	234	159	1,361	6.7%
14	241	129	91	209	96	362	144	1,272	6.3%
15	178	97	88	202	120	224	132	1,041	5.1%
Sub Total	1,062	475	282	1,166	451	1,021	566	5,023	24.8%
16	147	71	68	215	116	189	152	958	4.7%
17	96	44	64	101	73	170	111	659	3.3%
18	66	30	67	48	50	89	72	422	2.1%
Sub Total	309	145	199	364	239	448	335	2,039	10.1%
19	40	13	20	21	36	24	47	201	1.0%
20	23	9	24	19	21	6	27	129	0.6%
21	35	5	6	7	6	8	13	80	0.4%
>21	36	17	11	27	7	10	17	125	0.6%
Sub Total	134	44	61	74	70	48	104	535	2.6%
Total	3,617	2,011	1,647	4,285	1,461	4,380	2,857	20,258	100.0%

Credit Hour bands are not displayed if there were no students associated with that particular number of credit hours.
 Source: Wyoming Community College Commission



FALL '19 ENROLLMENT REPORT

Table 7a: Credit Headcount by Program of Study

College	Full Time			Part Time			Total		
	Transfer Preparation*	Career & Technical Education (CTE)**	Not Seeking Degree or Certificate	Transfer Preparation*	Career & Technical Education (CTE)**	Not Seeking Degree or Certificate	Transfer Preparation*	Career & Technical Education (CTE)**	Not Seeking Degree or Certificate
Casper	1,092	320	93	630	198	1,284	1,722	518	1,377
Central	374	194	96	151	260	936	525	454	1,032
Eastern	228	191	123	133	54	918	361	245	1,041
LCCC	1,233	356	15	922	205	1,554	2,155	561	1,569
Northwest	553	181	26	195	62	444	748	243	470
NWCCD	1,048	367	102	440	1,018	1,405	1,488	1,385	1,507
Western	571	371	63	280	246	1,326	851	617	1,389
Total	5,099	1,980	518	2,751	2,043	7,867	7,850	4,023	8,385
Percent	67.1%	26.1%	6.8%	21.7%	16.1%	62.1%	38.8%	19.9%	41.4%

*Transfer Preparation programs provide students with the first two years of an education sequence designed to transition to a Bachelor's Degree program. Programs generally lead to an AA, AB, AFA or AS degree.

**Career Technical programs are designed to prepare students for entry into a specific occupational area or advancement in the workplace immediately upon completion/graduation. Programs generally lead to Certificates or an ADN or AAS degree.

Source: Wyoming Community College Commission



FALL '19 ENROLLMENT REPORT

Table 7b: FTE by Program of Study

College	Full Time			Part Time			Total		
	Transfer Preparation*	Career & Technical Education (CTE)**	Not Seeking Degree or Certificate	Transfer Preparation*	Career & Technical Education (CTE)**	Not Seeking Degree or Certificate	Transfer Preparation*	Career & Technical Education (CTE)**	Not Seeking Degree or Certificate
Casper	1,316.5	409.2	109.5	354.8	132.1	483.5	1,671.3	541.3	593.0
Central	458.0	237.2	115.3	88.6	123.0	362.3	546.5	360.2	477.6
Eastern	288.2	263.3	155.7	73.1	25.9	323.2	361.3	289.2	478.9
LCCC	1,440.1	458.5	16.6	556.2	111.3	471.0	1,996.3	569.7	487.5
Northwest	695.8	230.1	29.3	110.4	38.7	162.9	806.2	268.8	192.2
NWCCD	1,258.6	472.5	134.5	262.3	153.3	549.9	1,520.9	625.8	684.4
Western	738.0	466.0	76.8	139.8	134.5	421.4	877.8	600.5	498.2
Total	6,195.1	2,536.9	637.7	1,585.1	718.7	2,774.2	7,780.2	3,255.6	3,411.8
Percent	66.1%	27.1%	6.8%	31.2%	14.2%	54.6%	53.9%	22.5%	23.6%

*Transfer Preparation programs provide students with the first two years of an education sequence designed to transition to a Bachelor's Degree program. Programs generally lead to an AA, AB, AFA or AS degree.

**Career Technical programs are designed to prepare students for entry into a specific occupational area or advancement in the workplace immediately upon completion/graduation. Programs generally lead to Certificates or an ADN or AAS degree.

Source: Wyoming Community College Commission

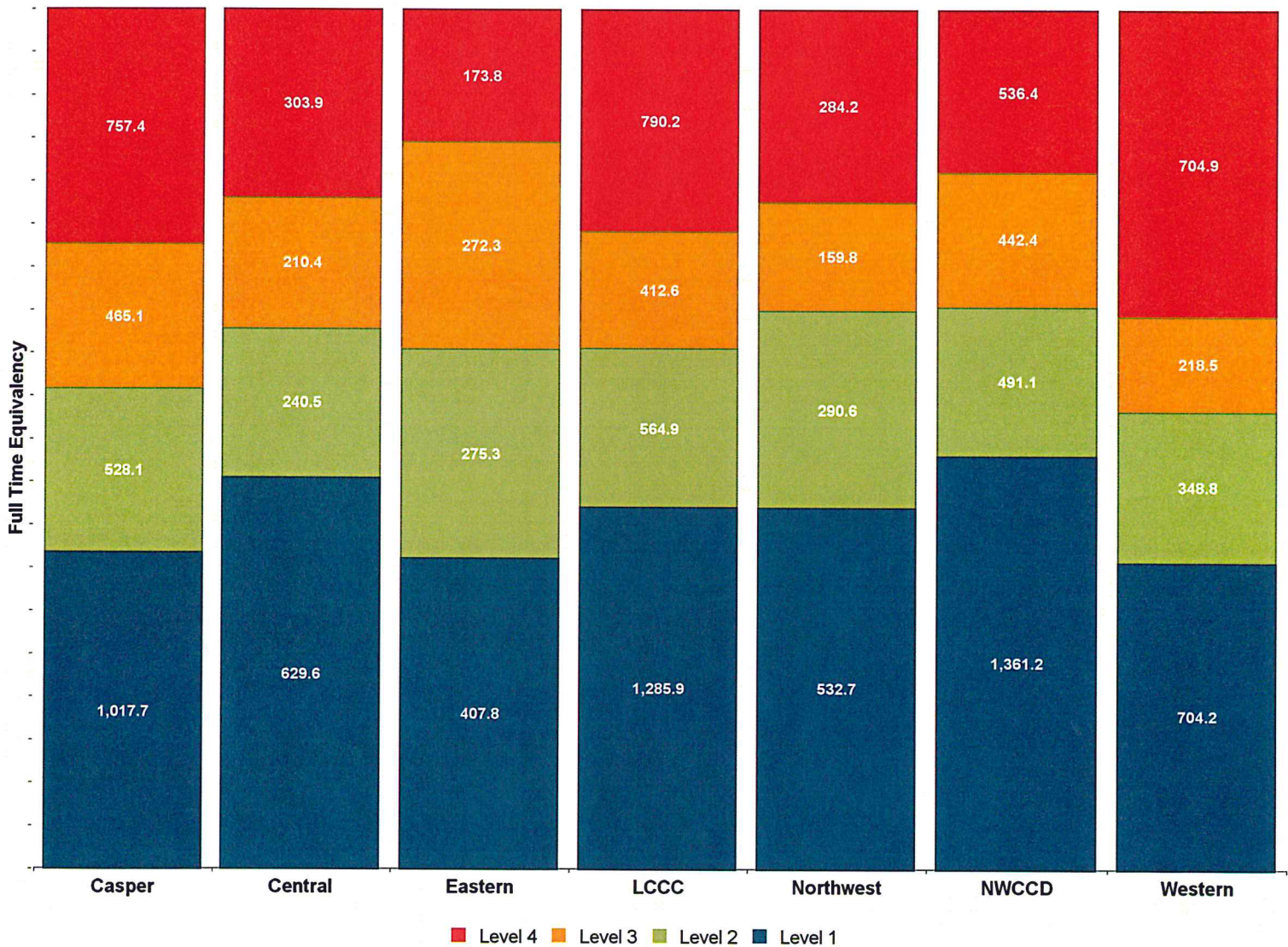


FALL '19 ENROLLMENT REPORT

Table 8: Level of Instruction

College	Level 1 FTE	Level 2 FTE	Level 3 FTE	Level 4 FTE	Unknown Level	TOTAL
Casper	1,017.7	528.1	465.1	757.4	37.3	2,805.6
Central	629.6	240.5	210.4	303.9	0.0	1,384.4
Eastern	407.8	275.3	272.3	173.8	0.0	1,129.3
LCCC	1,285.9	564.9	412.6	790.2	0.0	3,053.6
Northwest	532.7	290.6	159.8	284.2	0.0	1,267.2
NWCCD	1,361.2	491.1	442.4	536.4	0.0	2,831.0
Western	704.2	348.8	218.5	704.9	0.0	1,976.5
Total	5,939.1	2,739.2	2,181.1	3,550.8	37.3	14,447.6

Level 1 = Lecture, Level 2 = Laboratory, Level 3 = High Technology, Level 4 = Distance
 Source: Wyoming Community College Commission



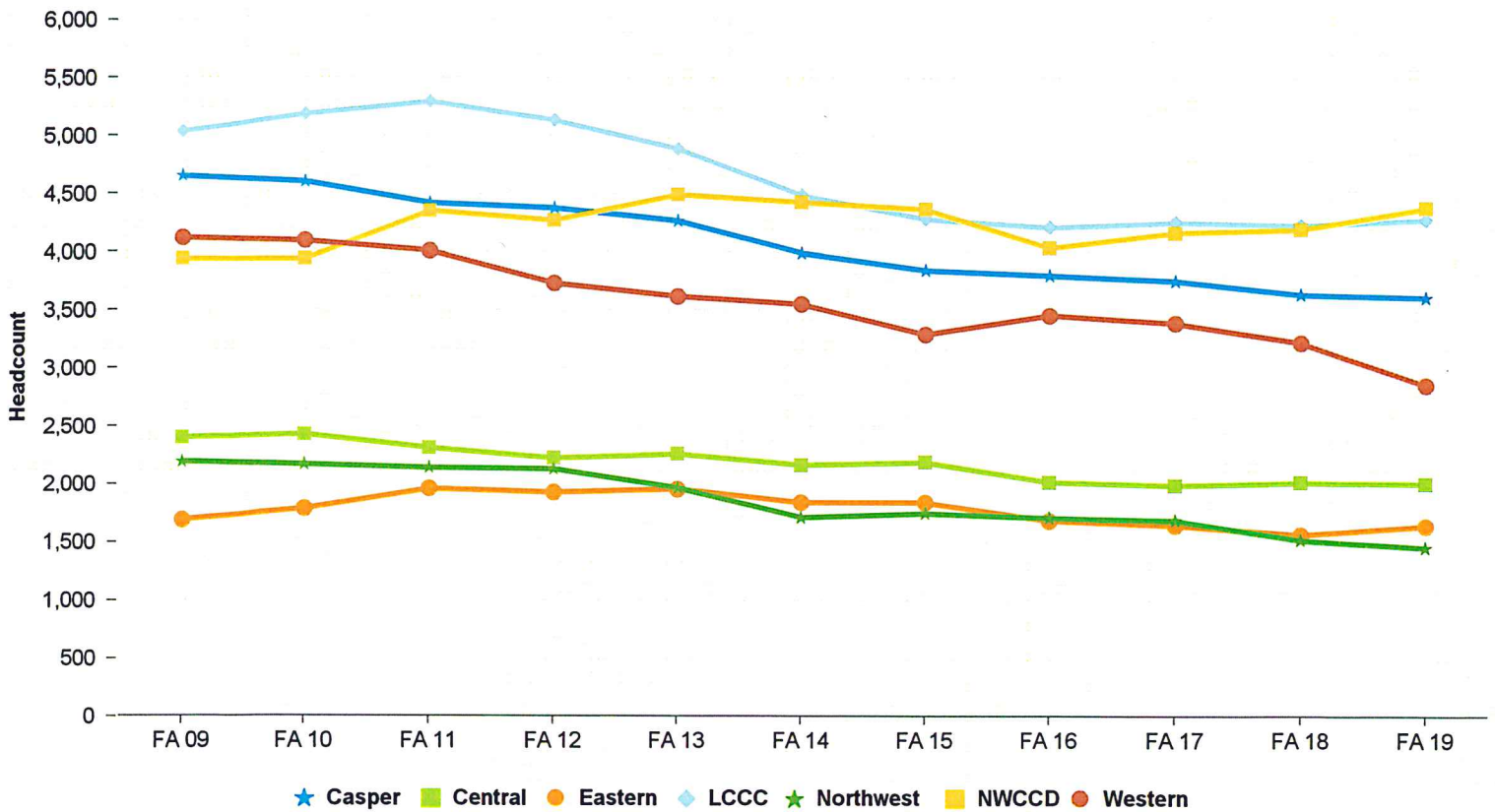


FALL '19 ENROLLMENT REPORT

Table 9: History of Headcount

Semester	Casper	Central	Eastern	LCCC	Northwest	NWCCD	Western	TOTAL	Percent Change
FALL 09	4,657	2,405	1,696	5,040	2,198	3,939	4,121	24,056	N/A
FALL 10	4,611	2,432	1,793	5,193	2,173	3,940	4,097	24,239	0.8%
FALL 11	4,426	2,316	1,965	5,302	2,145	4,356	4,013	24,523	1.2%
FALL 12	4,384	2,228	1,934	5,141	2,136	4,273	3,734	23,830	-2.8%
FALL 13	4,273	2,264	1,963	4,894	1,973	4,496	3,621	23,484	-1.5%
FALL 14	3,997	2,170	1,846	4,494	1,719	4,430	3,554	22,210	-5.4%
FALL 15	3,849	2,194	1,846	4,288	1,754	4,370	3,293	21,594	-2.8%
FALL 16	3,805	2,024	1,691	4,218	1,715	4,037	3,460	20,950	-3.0%
FALL 17	3,758	1,995	1,650	4,260	1,693	4,167	3,390	20,913	-0.2%
FALL 18	3,640	2,019	1,569	4,235	1,524	4,195	3,223	20,405	-2.4%
FALL 19	3,617	2,011	1,647	4,285	1,461	4,380	2,857	20,258	-0.7%
10-Yr Change	-22.3%	-16.4%	-2.9%	-15.0%	-33.5%	11.2%	-30.7%	-15.8%	
5-Yr Change	-9.5%	-7.3%	-10.8%	-4.7%	-15.0%	-1.1%	-19.6%	-8.8%	
1-Yr Change	-0.6%	-0.4%	5.0%	1.2%	-4.1%	4.4%	-11.4%	-0.7%	

Source: Wyoming Community College Commission



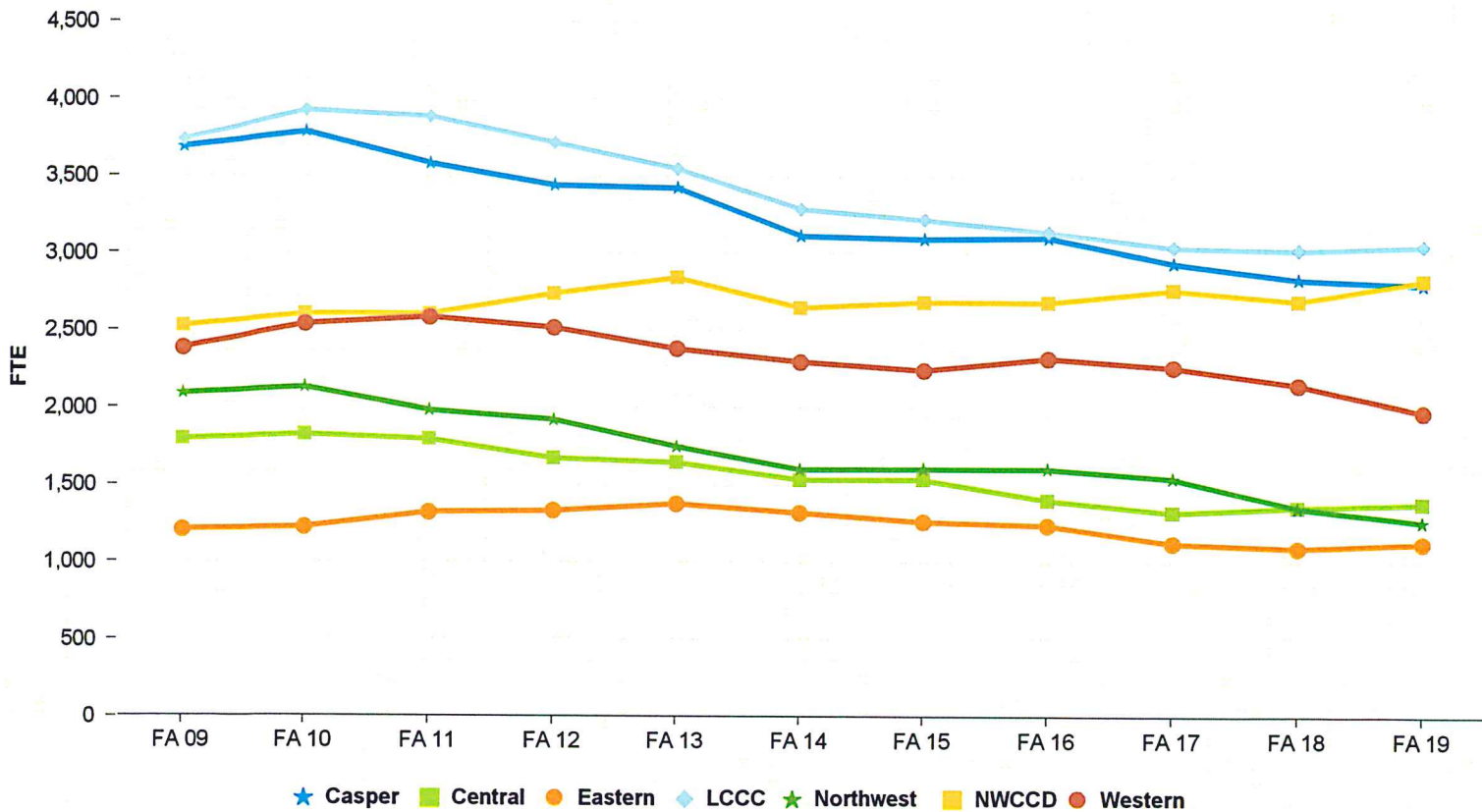


FALL '19 ENROLLMENT REPORT

Table 10: History of FTE Enrollment

Semester	Casper	Central	Eastern	LCCC	Northwest	NWCCD	Western	TOTAL	Percent Change
FALL 09	3,690.9	1,797.3	1,211.8	3,737.3	2,090.2	2,527.3	2,386.2	17,441.0	N/A
FALL 10	3,788.4	1,825.7	1,226.3	3,928.0	2,131.2	2,604.4	2,541.0	18,045.0	3.5%
FALL 11	3,584.3	1,796.8	1,325.6	3,888.3	1,984.0	2,606.4	2,587.0	17,772.4	-1.5%
FALL 12	3,444.1	1,674.8	1,335.3	3,720.7	1,925.7	2,740.6	2,520.3	17,361.4	-2.3%
FALL 13	3,428.5	1,649.1	1,381.6	3,552.8	1,752.7	2,845.7	2,384.1	16,994.6	-2.1%
FALL 14	3,118.0	1,538.5	1,324.0	3,291.7	1,604.8	2,650.4	2,301.5	15,828.7	-6.9%
FALL 15	3,099.7	1,539.8	1,266.1	3,223.8	1,608.8	2,688.9	2,247.2	15,674.3	-1.0%
FALL 16	3,109.0	1,406.6	1,243.5	3,144.2	1,608.5	2,685.9	2,324.8	15,522.4	-1.0%
FALL 17	2,944.8	1,328.2	1,128.5	3,045.0	1,549.0	2,767.2	2,266.3	15,029.0	-3.2%
FALL 18	2,841.1	1,363.0	1,097.8	3,028.0	1,359.1	2,696.7	2,154.5	14,540.2	-3.3%
FALL 19	2,805.6	1,384.4	1,129.3	3,053.6	1,267.2	2,831.0	1,976.5	14,447.6	-0.6%
10-Yr Change	-24.0%	-23.0%	-6.8%	-18.3%	-39.4%	12.0%	-17.2%	-17.2%	
5-Yr Change	-10.0%	-10.0%	-14.7%	-7.2%	-21.0%	6.8%	-14.1%	-8.7%	
1-Yr Change	-1.2%	1.6%	2.9%	0.8%	-6.8%	5.0%	-8.3%	-0.6%	

Source: Wyoming Community College Commission



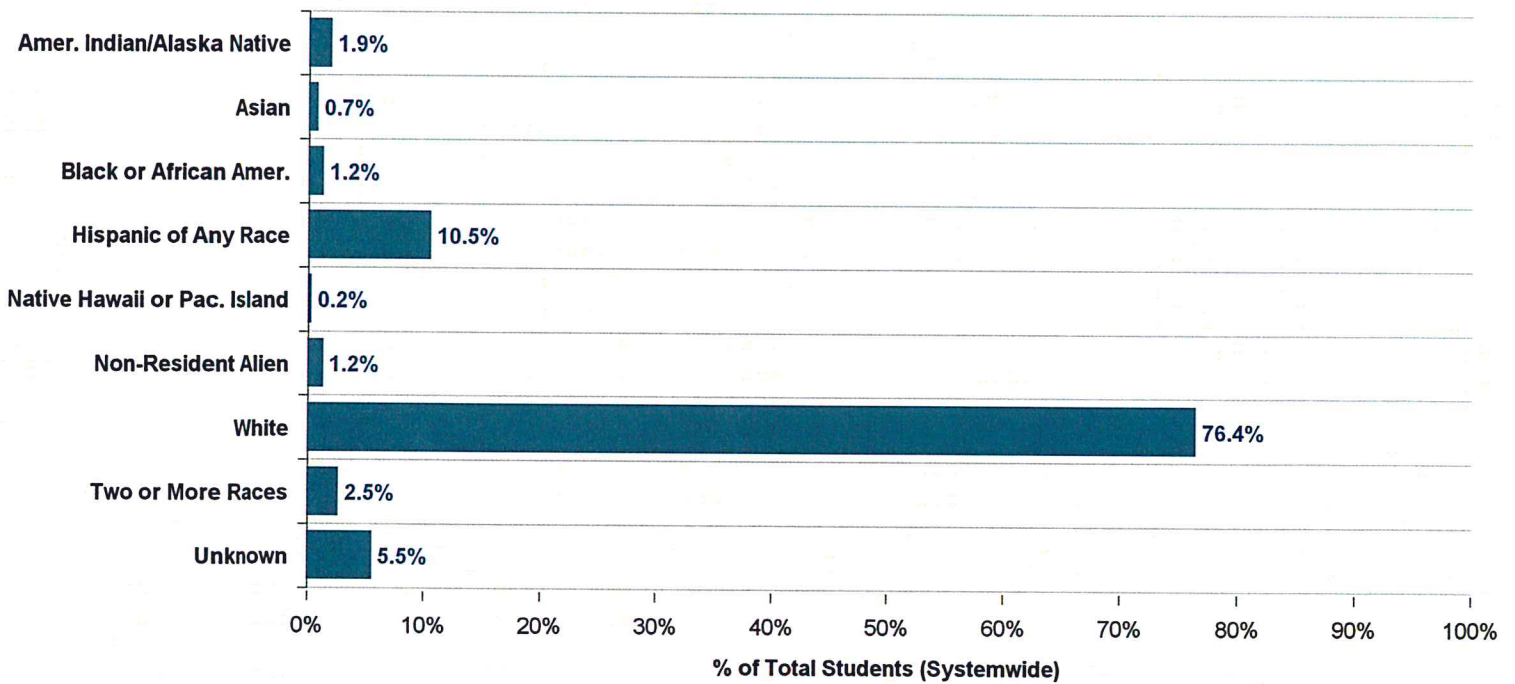


FALL '19 ENROLLMENT REPORT

Table 11: Headcount by Race/Ethnicity

Race/Ethnicity	Casper	Central	Eastern	LCCC	Northwest	NWCCD	Western	Total	%
Amer. Indian/Alaska Native	36	191	16	36	5	77	16	377	1.9%
Asian	29	18	6	40	11	20	18	142	0.7%
Black or African Amer.	46	10	19	81	9	31	47	243	1.2%
Hispanic of Any Race	291	234	157	594	118	348	377	2,119	10.5%
Native Hawaii or Pac. Island	10	1	4	4	6	8	6	39	0.2%
Non-Resident Alien	34	14	27	26	69	32	45	247	1.2%
White	2,928	1,245	1,395	2,731	1,207	3,724	2,239	15,469	76.4%
Two or More Races	49	78	20	150	26	128	65	516	2.5%
Unknown	194	220	3	623	10	12	44	1,106	5.5%
Total	3,617	2,011	1,647	4,285	1,461	4,380	2,857	20,258	100.0%

Source: Wyoming Community College Commission





FALL '19 ENROLLMENT REPORT

Table 12: Students Auditing Courses

Credit Headcount

College	Exclusively Auditing	*Credit Students Auditing
Casper	123	42
Central	63	24
Eastern	97	30
LCCC	131	4
Northwest	15	6
NWCCD	32	1
Western	36	2
Total	497	109

FTE

College	Exclusively Auditing	*Credit Students Auditing
Casper	24.3	49.4
Central	9.2	20.7
Eastern	8.2	42.5
LCCC	28.9	3.6
Northwest	2.3	6.5
NWCCD	6.5	0.4
Western	7.6	2.0
Total	87.1	125.0

* Represents students taking audit hours within regular course schedule
 Source: Wyoming Community College Commission



FALL '19 ENROLLMENT REPORT

Table 13: Alternative Delivery Courses

Enrollment and Credit Hours	Casper	Central	Eastern	LCCC	Northwest	NWCCD	Western	System Total
Concurrent Enrollment Headcount	429	674	707	773	191	1,159	457	4,390
% of total students enrolled in Concurrent Enrollment credits	11.9%	33.5%	42.9%	18.0%	13.1%	26.5%	16.0%	21.7%
Concurrent Enrollment student credit hours	1,806.0	4,041.0	3,483.0	2,752.0	682.0	6,125.5	1,786.0	20,675.5
% of total student credit hours	5.4%	24.3%	25.7%	7.5%	4.5%	18.0%	7.5%	11.9%
Dual Enrollment Headcount	239	201	201	332	195	260	527	1,955
% of total students enrolled in 1+ credits as Dual Enrollment	6.6%	10.0%	12.2%	7.7%	13.3%	5.9%	18.4%	9.7%
Dual Enrollment student credit hours	1,259.0	888.0	850.0	1,158.0	884.0	1,341.0	2,217.0	8,597.0
% of total student credit hours	3.7%	5.3%	6.3%	3.2%	5.8%	3.9%	9.3%	5.0%
Developmental Headcount **	492	93	145	505	155	358	328	2,076
% of total students enrolled in 1+ developmental credits	13.6%	4.6%	8.8%	11.8%	10.6%	8.2%	11.5%	10.2%
Developmental student credit hours	2,227.0	376.0	504.0	2,067.0	299.0	1,527.0	1,607.0	8,607.0
% of total student credit hours	6.6%	2.3%	3.7%	5.6%	2.0%	4.5%	6.8%	5.0%

* Categories are not mutually exclusive. The same student could be enrolled in more than one of the above categories.

** Includes sections with Course Levels of DEV, DV, DVST, and REM.

*** English includes ENG courses and sections with course titles containing the terms Writing, Spelling, Grammar, and Reading. Math includes course titles w/ Math, Algebra, and Arithmetic.



FALL '19 ENROLLMENT REPORT

Table 14: Distance Education

Enrollment and Credit Hours	Casper	Central	Eastern	LCCC	Northwest	NWCCD	Western	System Total
Distance Education Headcount *	1,662	807	459	1,669	694	1,255	1,448	7,994
% of total students enrolled in 1+ distance education credits	45.9%	40.1%	27.9%	38.9%	47.5%	28.7%	50.7%	39.5%
Distance Education student credit hours	9,203	3,647	2,258	9,482	3,410	6,383	7,487	41,870
% of total student credit hours	27.3%	22.0%	16.7%	25.9%	22.4%	18.8%	31.6%	24.2%

* Sections with Schedule Types of Internet (NET), Interactive Video (IV), HYBD (Hybrid Distance), HN (High School Concurrent Online), and Telecourse (TV).