

Wyoming Community College Commission

Commissioners

Mr. Larry Atwell, Cheyenne
Mr. Bruce Brown, Devils Tower
Ms. Katherine Dooley, Powell
Dr. Craig Frederick, Guernsey
Dr. Jackie Freeze, Rock Springs
Ms. Sandra Meyer, Evanston
Ms. Julia Newman, Torrington

Ex-officios

Governor Matt Mead
State Superintendent Jillian Balow
Executive Director
Dr. Sandra Caldwell
Phone: 307-777-7763
Fax: 307-777-6567
www.communitycolleges.wy.edu

2300 Capitol Avenue, 5th Floor - Suite B, Cheyenne, Wyoming 82002



WYOMING
COMMUNITY COLLEGES

Wyoming Community College System
Spring 2018
Term Enrollment Report

Casper College ~ Central Wyoming College ~ Eastern Wyoming College
Laramie County Community College ~ Northwest College
Northern Wyoming Community College District
Western Wyoming Community College

WYOMING COMMUNITY COLLEGE SYSTEM
SPRING 2018 ENROLLMENT REPORT

This report provides a look at the Spring 2018 term enrollment in categories such as student load, location and demographics of the community college student population. The content and format of this report have been developed through a collaborative effort between the Wyoming Community College Commission (WCCC), the Executive Council and the Data Governance/Institutional Research Council members representing the seven community colleges.

Effective with the summer 2016 reporting term, data were extracted from the Central Station Instance (CSI) using one report rather than consolidating individual customized reports from all seven colleges. All enrollment reports have the foundation of:

- Student enrollment being counted the day after 12% of each course has been completed.
- "Full-time equivalency means the number of approved academic or vocational-technical credit hours for each class for which students are enrolled divided by twelve (12)". W.S. 21-18-102 (a)(xii).
- Student headcount includes students who are enrolled for a letter grade, pass/fail designation as well as those who are auditing a course.
- "Duplicated headcount" means that within a survey or polling exercise of numerous programs and/or courses, a student may be counted more than once". WCCC Rules-2015
- "Unduplicated headcount" means that within a survey or polling exercise of numerous programs and/or courses, a student shall be counted only once". WCCC Rules- 2015
- "Concurrent enrollment course" means a college course taught by high school faculty who have been approved as community college adjunct faculty and who are teaching said course as part of their duties as a school district employee. As such, these college courses simultaneously satisfy high school graduation requirements. These courses have been approved by the community college as having equivalent course content, learning objectives and work assignments as an existing college course. Course content and learning objectives are equivalent to the related community college course as determined and defined by community college faculty. WCCC Rules- 2017
- "Dual enrollment credit" means credit given to qualified high school students who complete college level courses for which the community college hires and pays the instructor and in which the school district agrees to allow high school graduation credit. WCCC Rules- 2017

*Full-time equivalencies (FTE) reported in tables 1, 5, 7b, 8 and 10 may vary slightly due to rounding in the enrollment calculations.

**The data presented in this report may vary from enrollment reports posted on Wyoming college websites due to extraction date and sub-set parameter differences.

For additional information and discussion regarding this report, please refer to the Wyoming Community College Commission's meeting minutes for October 16, 2018 located on the Commission's website at <http://communitycolleges.wy.edu>.



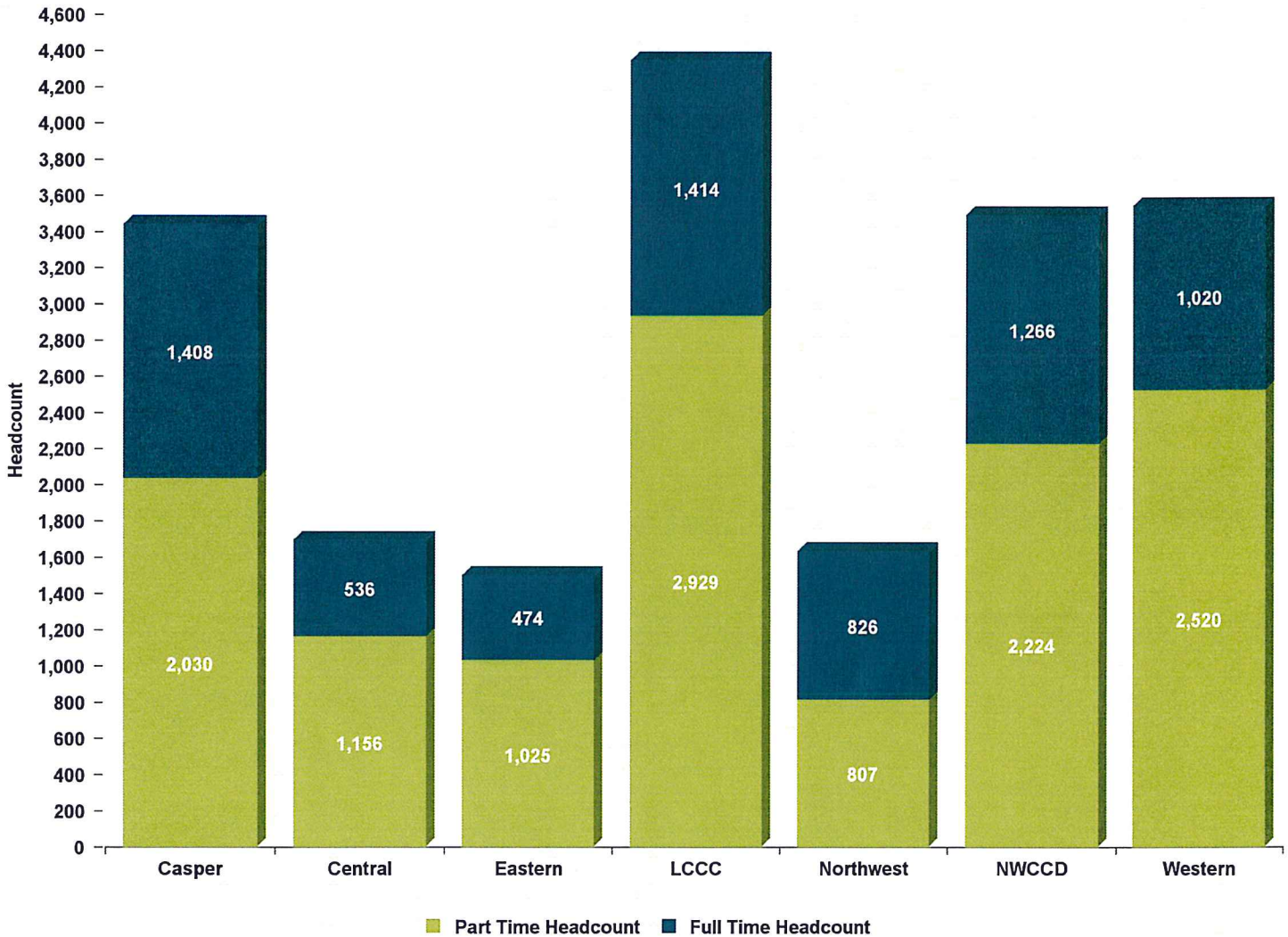
SPRING '18 ENROLLMENT REPORT

Table 1: Credit Headcount & FTE

College	CREDIT HEADCOUNT			
	Full Time	Part Time	Total	%
Casper	1,408	2,030	3,438	17.5%
Central	536	1,156	1,692	8.6%
Eastern	474	1,025	1,499	7.6%
LCCC	1,414	2,929	4,343	22.1%
Northwest	826	807	1,633	8.3%
NWCCD	1,266	2,224	3,490	17.8%
Western	1,020	2,520	3,540	18.0%
Total	6,944	12,691	19,635	100.0%
Percent	35.4%	64.6%	100.0%	

College	CREDIT FTE			
	Full Time	Part Time	Total	%
Casper	1,759.7	907.4	2,667.2	19.7%
Central	675.3	438.6	1,113.9	8.2%
Eastern	611.9	374.2	986.2	7.3%
LCCC	1,708.9	1,249.2	2,958.0	21.8%
Northwest	1,086.7	354.2	1,440.9	10.6%
NWCCD	1,565.7	674.7	2,240.5	16.5%
Western	1,316.4	815.3	2,131.7	15.7%
Total	8,724.6	4,813.8	13,538.3	100.0%
Percent	64.4%	35.6%	100.0%	

Source: Wyoming Community College Commission





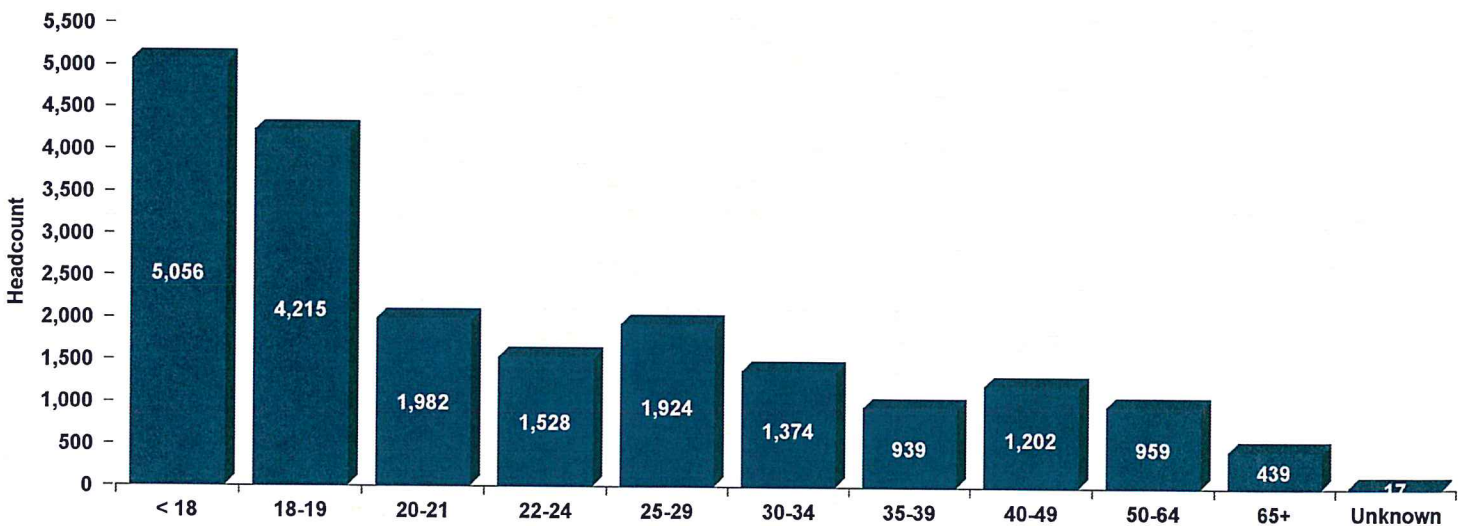
SPRING '18 ENROLLMENT REPORT

Table 2: Credit Headcount by Age

College	< 18	18-19	20-21	22-24	25-29	30-34	35-39	40-49	50-64	65+	Unknown	TOTAL
Casper	500	820	459	354	430	248	162	201	139	124	1	3,438
Central	426	314	166	107	174	143	94	118	111	39	0	1,692
Eastern	655	285	93	73	88	67	51	68	60	56	3	1,499
LCCC	1,310	855	496	406	465	282	146	166	137	79	1	4,343
Northwest	380	554	183	119	122	70	42	78	60	25	0	1,633
NWCCD	633	785	317	238	343	305	231	299	266	72	1	3,490
Western	1,152	602	268	231	302	259	213	272	186	44	11	3,540
Total	5,056	4,215	1,982	1,528	1,924	1,374	939	1,202	959	439	17	19,635
Percent	25.7%	21.5%	10.1%	7.8%	9.8%	7.0%	4.8%	6.1%	4.9%	2.2%	0.1%	100.0%

Average Age	Casper	Central	Eastern	LCCC	Northwest	NWCCD	Western	Systemwide
Female	26.7	27.0	23.2	24.1	24.6	25.0	24.3	25.0
Male	26.9	26.7	25.5	23.5	22.2	30.8	26.9	26.5
Full Time	22.8	23.7	21.2	22.8	20.8	22.1	22.4	22.3
Part Time	29.5	28.4	25.6	24.4	26.5	31.3	26.9	27.5
Total	26.8	26.9	24.2	23.8	23.6	28.0	25.6	25.7
Median Age	Casper	Central	Eastern	LCCC	Northwest	NWCCD	Western	Systemwide
Female	21	21	18	20	19	20	19	20
Male	21	20	18	19	19	26	21	20
Full Time	19	19	19	20	19	19	19	19
Part Time	24	23	17	19	20	28	21	21
Total	21	21	18	20	19	22	20	20

Students with unreported birth dates are excluded. The male and female statistics exclude students with unreported gender.
Source: Wyoming Community College Commission



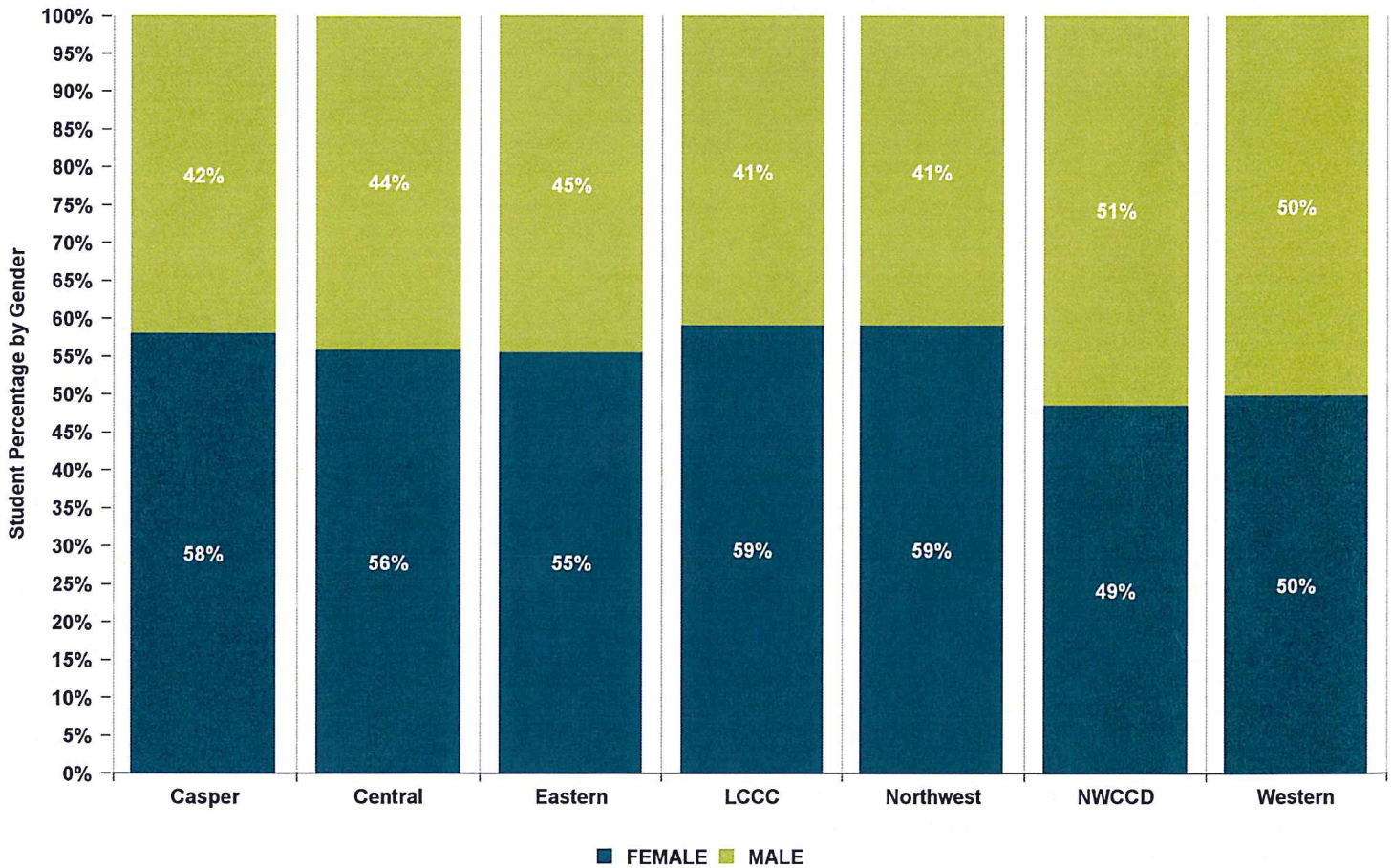


SPRING '18 ENROLLMENT REPORT

Table 3: Credit Headcount by Gender

College	SPRING				TOTAL
	Male	% Male	Female	% Female	
Casper	1,443	42.0%	1,993	58.0%	3,438
Central	745	44.0%	944	55.8%	1,692
Eastern	668	44.6%	831	55.4%	1,499
LCCC	1,777	40.9%	2,564	59.0%	4,343
Northwest	668	40.9%	964	59.0%	1,633
NWCCD	1,797	51.5%	1,693	48.5%	3,490
Western	1,776	50.2%	1,764	49.8%	3,540
Total	8,874	45.2%	10,753	54.8%	19,635

These data do not reflect those not reported as male or female.
 Source: Wyoming Community College Commission





SPRING '18 ENROLLMENT REPORT

Table 4: Credit Headcount by Residency

County	Casper	Central	Eastern	LCCC	Northwest	NWCCD	Western	Total	% of In-State	County Pop.**	****Credit Students as % of Pop.
Albany	37	7	8	703	6	13	6	780	4.5%	37,956	2.1%
Big Horn	43	7	3	11	327	26	6	423	2.4%	12,022	3.5%
Campbell	75	12	22	31	14	1,570	6	1,730	9.9%	49,220	3.5%
Carbon	38	42	1	42	4	9	188	324	1.9%	15,559	2.1%
Converse	140	8	360	14	5	21	4	552	3.2%	14,236	3.9%
Crook	16	6	112	5	8	103	0	250	1.4%	7,444	3.4%
Fremont	74	984	17	21	12	14	11	1,133	6.5%	40,315	2.8%
Goshen	24	6	419	22	2	10	1	484	2.8%	13,383	3.6%
Hot Springs	13	74	3	6	15	8	1	120	0.7%	4,741	2.5%
Johnson	20	8	6	5	6	171	0	216	1.2%	8,585	2.5%
Laramie	89	9	24	2,870	6	21	13	3,032	17.4%	97,121	3.1%
Lincoln	21	29	4	16	13	7	309	399	2.3%	18,722	2.1%
Natrona	2,250	33	13	35	9	42	16	2,398	13.8%	82,178	2.9%
Niobrara	14	2	32	7	1	2	0	58	0.3%	2,542	2.3%
Park	38	15	8	16	760	50	11	898	5.2%	29,228	3.1%
Platte	50	1	103	26	0	13	2	195	1.1%	8,812	2.2%
Sheridan	32	7	7	12	6	898	2	964	5.5%	30,009	3.2%
Sublette	12	15	3	13	12	11	143	209	1.2%	9,899	2.1%
Sweetwater	32	12	4	15	10	11	1,924	2,008	11.5%	44,626	4.5%
Teton	28	171	1	10	1	4	5	220	1.3%	23,125	1.0%
Uinta	15	21	11	7	13	2	551	620	3.6%	20,822	3.0%
Unknown	0	0	0	9	0	0	0	9	0.1%	n/a	n/a
Washakie	34	11	2	4	60	36	3	150	0.9%	8,328	1.8%
Weston	27	3	148	9	4	30	0	221	1.3%	7,234	3.1%
In Tax District	2,250	984	419	2,870	760	898	1,924	10,105			
In Service Area ***	0	245	755	703	387	1,741	1,191	5,022			
Out of Service Area	872	254	137	336	147	433	87	2,266			
Total In-State	3,122	1,483	1,311	3,909	1,294	3,072	3,202	17,393			
Border States *	172	90	148	312	188	300	185	1,395			
All Other States	122	116	23	93	89	97	92	632			
International	22	3	17	29	62	21	61	215			
Total	3,438	1,692	1,499	4,343	1,633	3,490	3,540	19,635			
% In Tax District	65.4%	58.2%	28.0%	66.1%	46.5%	25.7%	54.4%	51.5%			
% In Service Area	0.0%	14.5%	50.4%	16.2%	23.7%	49.9%	33.6%	25.6%			
% Out of Service Area	25.4%	15.0%	9.1%	7.7%	9.0%	12.4%	2.5%	11.5%			
% In-State	90.8%	87.6%	87.5%	90.0%	79.2%	88.0%	90.5%	88.6%			
% Border States *	5.0%	5.3%	9.9%	7.2%	11.5%	8.6%	5.2%	7.1%			
% All Other States	3.5%	6.9%	1.5%	2.1%	5.5%	2.8%	2.6%	3.2%			
% International	0.6%	0.2%	1.1%	0.7%	3.8%	0.6%	1.7%	1.1%			

* Border states include Colorado, Utah, Idaho, Montana, South Dakota, and Nebraska.

** US Census Bureau Estimate www.census.gov/quickfacts/table

*** Casper is the only college with one service area.

**** Total In-State Credit Students as % of Population: 3.0%

BOLD:
College Location

BLUE:
College Service Area

Source: Wyoming Community College Commission



SPRING '18 ENROLLMENT REPORT

Table 5: Credit FTE by Residency

WY County	Casper	Central	Eastern	LCCC	Northwest	NWCCD	Western	Total
Albany	22.3	4.9	9.8	<u>432.8</u>	6.8	13.3	3.2	493.1
Big Horn	44.3	4.9	2.3	6.4	<u>258.2</u>	24.5	1.6	342.2
Campbell	56.8	5.3	25.4	23.6	16.2	<u>791.7</u>	3.0	921.9
Carbon	41.3	22.6	1.6	39.7	4.3	11.2	<u>98.3</u>	218.9
Converse	123.6	4.0	<u>199.9</u>	14.8	6.1	9.2	4.1	361.8
Crook	15.2	2.4	<u>69.9</u>	3.2	8.8	48.6	0.0	148.0
Fremont	71.0	650.5	19.0	14.8	11.8	14.0	3.3	784.4
Goshen	23.7	2.4	217.3	21.7	1.8	8.4	0.7	275.9
Hot Springs	12.6	<u>37.2</u>	2.4	4.3	15.7	9.3	1.0	82.4
Johnson	16.4	5.5	7.7	2.2	4.3	<u>100.5</u>	0.0	136.4
Laramie	54.5	6.5	31.3	1,829.5	5.8	15.8	8.9	1,952.3
Lincoln	13.4	15.9	4.0	12.8	16.5	6.9	<u>165.5</u>	235.0
Natrona	1,604.7	23.7	9.6	21.5	9.2	43.5	5.3	1,717.5
Niobrara	15.3	2.8	<u>15.7</u>	7.4	0.5	2.6	0.0	44.3
Park	27.4	9.5	5.4	12.3	565.3	42.7	4.2	666.7
Platte	47.9	0.3	<u>50.5</u>	18.8	0.0	13.5	1.9	132.9
Sheridan	20.9	4.2	7.5	9.8	7.1	603.0	0.5	653.0
Sublette	13.2	11.7	2.8	13.8	15.4	11.3	<u>70.5</u>	138.6
Sweetwater	24.5	10.4	6.1	14.5	12.8	3.7	1,141.0	1,213.0
Teton	18.6	<u>87.5</u>	1.2	6.8	0.3	3.5	3.5	121.4
Uinta	14.8	11.3	13.4	5.6	10.7	1.7	<u>330.6</u>	388.0
Unknown	0.0	0.0	0.0	6.3	0.0	0.0	0.0	6.3
Washakie	31.2	8.4	2.9	5.3	<u>49.7</u>	35.5	2.5	135.4
Weston	26.7	3.0	<u>66.5</u>	9.0	4.0	12.5	0.0	121.8
In Tax District	1,604.7	650.5	217.3	1,829.5	565.3	603.0	1,141.0	6,611.4
In Service Area **	0.0	124.7	402.5	432.8	307.9	892.2	664.9	2,825.0
Out of Service Area	735.5	159.7	152.3	274.3	157.8	331.7	43.5	1,854.9
Total In-State	2,340.3	935.0	772.1	2,536.7	1,031.0	1,826.9	1,849.3	11,291.3
Border States *	177.76	81.08	164.33	312.67	238.88	294.63	150.79	1,420.14
All Other States	119.6	94.3	25.8	79.8	85.0	92.3	59.3	556.0
International	29.6	3.6	24.0	28.8	86.0	26.7	72.3	270.9
Total	2,667.2	1,113.9	986.2	2,958.0	1,440.9	2,240.5	2,131.7	13,538.3
% In Tax District	60.2%	58.4%	22.0%	61.8%	39.2%	26.9%	53.5%	48.8%
% In Service Area	0.0%	11.2%	40.8%	14.6%	21.4%	39.8%	31.2%	20.9%
% Out of Service Area	27.6%	14.3%	15.4%	9.3%	11.0%	14.8%	2.0%	13.7%
% In-State	87.7%	83.9%	78.3%	85.8%	71.6%	81.5%	86.8%	83.4%
% Border States *	6.7%	7.3%	16.7%	10.6%	16.6%	13.2%	7.1%	10.5%
% All Other States	4.5%	8.5%	2.6%	2.7%	5.9%	4.1%	2.8%	4.1%
% International	1.1%	0.3%	2.4%	1.0%	6.0%	1.2%	3.4%	2.0%

* Border states include Colorado, Utah, Idaho, Montana, South Dakota, and Nebraska.

** Casper is the only college with one service area.

Source: Wyoming Community College Commission



SPRING '18 ENROLLMENT REPORT

Table 6: Headcount by Credit Hours

Credit Hours	Casper	Central	Eastern	LCCC	Northwest	NWCCD	Western	Total	Percent
<1	3	38	2	0	11	611	287	952	4.8%
1	158	77	163	133	39	277	350	1,197	6.1%
2	105	77	104	171	29	27	242	755	3.8%
3	352	351	253	971	225	537	652	3,341	17.0%
Sub Total	618	543	522	1,275	304	1,452	1,531	6,245	31.8%
4	390	207	122	309	96	144	190	1,458	7.4%
5	129	23	49	97	47	35	43	423	2.2%
6	244	102	92	392	120	115	307	1,372	7.0%
Sub Total	763	332	263	798	263	294	540	3,253	16.6%
7	181	78	75	250	55	120	144	903	4.6%
8	94	58	35	102	34	76	60	459	2.3%
9	100	95	54	182	78	69	107	685	3.5%
Sub Total	375	231	164	534	167	265	311	2,047	10.4%
10	167	32	55	226	40	155	91	766	3.9%
11	107	18	21	96	33	58	47	380	1.9%
12	234	94	63	376	119	230	150	1,266	6.4%
Sub Total	508	144	139	698	192	443	288	2,412	12.3%
13	303	85	52	282	114	245	165	1,246	6.3%
14	222	81	81	192	89	214	116	995	5.1%
15	159	84	59	166	97	171	130	866	4.4%
Sub Total	684	250	192	640	300	630	411	3,107	15.8%
16	164	60	64	153	113	133	123	810	4.1%
17	88	35	40	90	74	123	107	557	2.8%
18	74	51	59	62	62	61	87	456	2.3%
Sub Total	326	146	163	305	249	317	317	1,823	9.3%
19	59	11	21	32	74	33	58	288	1.5%
20	44	10	14	14	35	27	31	175	0.9%
21	26	11	12	14	22	5	18	108	0.6%
Sub Total	129	32	47	60	131	65	107	571	2.9%
>21	35	14	9	33	27	24	35	177	0.9%
Sub Total	35	14	9	33	27	24	35	177	0.9%
Total	3,438	1,692	1,499	4,343	1,633	3,490	3,540	19,635	100.0%

Credit Hour bands are not displayed if there were no students associated with that particular number of credit hours.
 Source: Wyoming Community College Commission



SPRING '18 ENROLLMENT REPORT

Table 7a: Credit Headcount by Program of Study

College	Full Time			Part Time			Total		
	Transfer Preparation*	Career & Technical Education (CTE)**	Not Seeking Degree or Certificate	Transfer Preparation*	Career & Technical Education (CTE)**	Not Seeking Degree or Certificate	Transfer Preparation*	Career & Technical Education (CTE)**	Not Seeking Degree or Certificate
Casper	1,025	351	32	597	246	1,187	1,622	597	1,219
Central	333	179	24	180	216	760	513	395	784
Eastern	198	174	102	128	63	834	326	237	936
LCCC	989	393	32	951	268	1,710	1,940	661	1,742
Northwest	623	178	25	204	84	519	827	262	544
NWCCD	886	359	21	454	1,023	747	1,340	1,382	768
Western	622	354	44	423	282	1,815	1,045	636	1,859
Total	4,676	1,988	280	2,937	2,182	7,572	7,613	4,170	7,852
Percent	67.3%	28.6%	4.0%	23.1%	17.2%	59.7%	38.8%	21.2%	40.0%

*Transfer Preparation programs provide students with the first two years of an education sequence designed to transition to a Bachelor's Degree program. Programs generally lead to an AA, AB, AFA or AS degree.

**Career Technical programs are designed to prepare students for entry into a specific occupational area or advancement in the workplace immediately upon completion/graduation. Programs generally lead to Certificates or an ADN or AAS degree.

Source: Wyoming Community College Commission



SPRING '18 ENROLLMENT REPORT

Table 7b: FTE by Program of Study

College	Full Time			Part Time			Total		
	Transfer Preparation*	Career & Technical Education (CTE)**	Not Seeking Degree or Certificate	Transfer Preparation*	Career & Technical Education (CTE)**	Not Seeking Degree or Certificate	Transfer Preparation*	Career & Technical Education (CTE)**	Not Seeking Degree or Certificate
Casper	1,267.7	455.5	36.6	340.7	163.7	403.0	1,608.4	619.2	439.6
Central	414.5	227.8	33.0	94.3	120.0	224.3	508.8	347.8	257.3
Eastern	254.8	231.8	125.3	65.8	27.6	280.8	320.7	259.3	406.2
LCCC	1,183.1	489.9	35.8	544.7	147.4	557.0	1,727.9	637.3	592.8
Northwest	819.1	238.5	29.0	113.1	56.5	184.6	932.3	295.0	213.7
NWCCD	1,074.3	467.3	24.2	263.3	184.7	226.8	1,337.5	652.0	251.0
Western	803.5	460.5	52.4	175.8	145.0	494.5	979.3	605.5	547.0
Total	5,817.0	2,571.2	336.4	1,597.7	844.9	2,371.1	7,414.7	3,416.1	2,707.5
Percent	66.7%	29.5%	3.9%	33.2%	17.6%	49.3%	54.8%	25.2%	20.0%

*Transfer Preparation programs provide students with the first two years of an education sequence designed to transition to a Bachelor's Degree program. Programs generally lead to an AA, AB, AFA or AS degree.

**Career Technical programs are designed to prepare students for entry into a specific occupational area or advancement in the workplace immediately upon completion/graduation. Programs generally lead to Certificates or an ADN or AAS degree.

Source: Wyoming Community College Commission

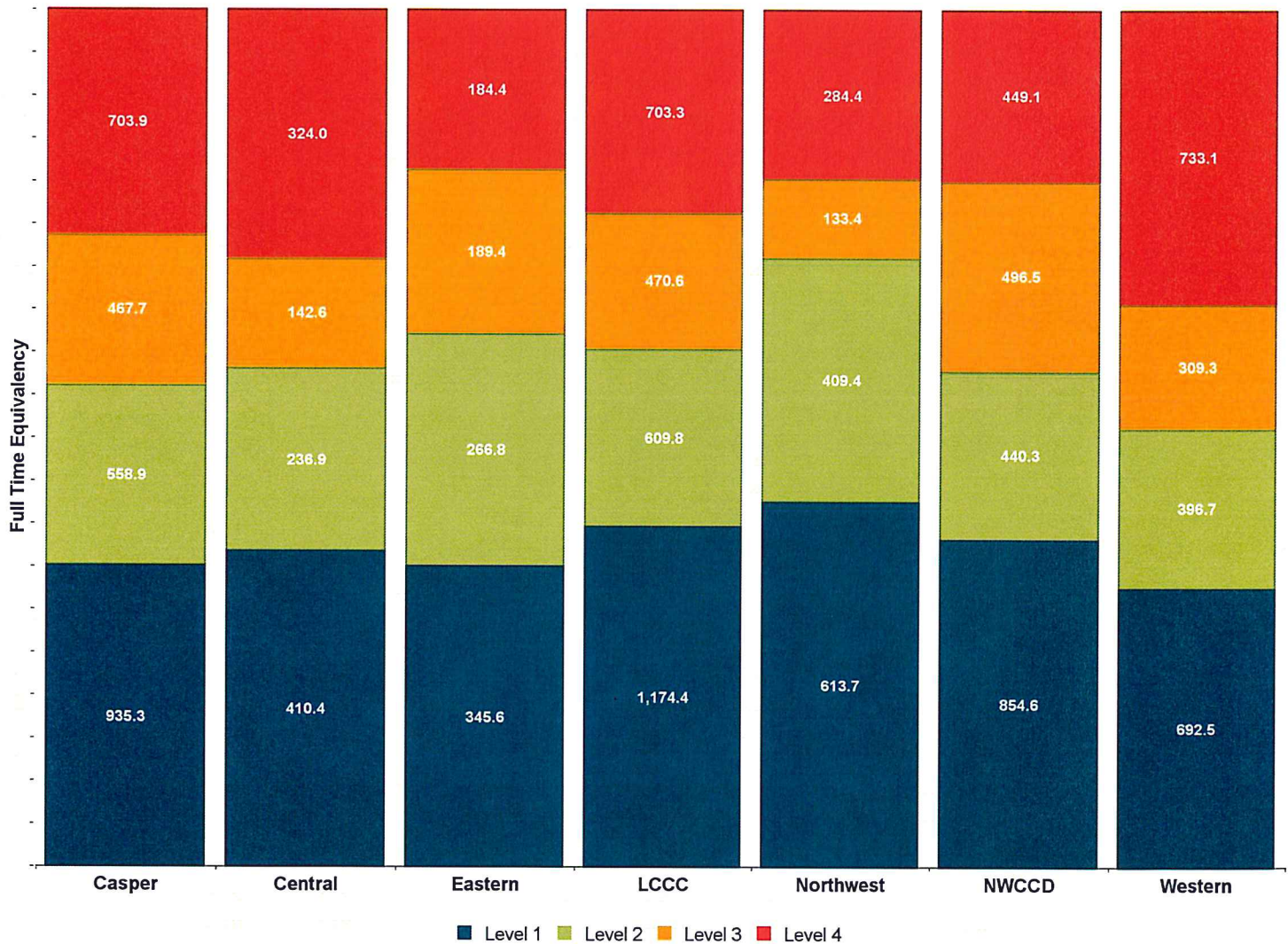


SPRING '18 ENROLLMENT REPORT

Table 8: Level of Instruction

College	Level 1 FTE	Level 2 FTE	Level 3 FTE	Level 4 FTE	TOTAL
Casper	935.3	558.9	467.7	703.9	2,665.8
Central	410.4	236.9	142.6	324.0	1,113.9
Eastern	345.6	266.8	189.4	184.4	986.2
LCCC	1,174.4	609.8	470.6	703.3	2,958.0
Northwest	613.7	409.4	133.4	284.4	1,440.9
NWCCD	854.6	440.3	496.5	449.1	2,240.5
Western	692.5	396.7	309.3	733.1	2,131.7
Total	5,026.5	2,918.8	2,209.6	3,382.2	13,537.0

Level 1 = Lecture, Level 2 = Laboratory, Level 3 = High Technology, Level 4 = Distance
 Does not include classes with a blank or undefined Level.
 Source: Wyoming Community College Commission



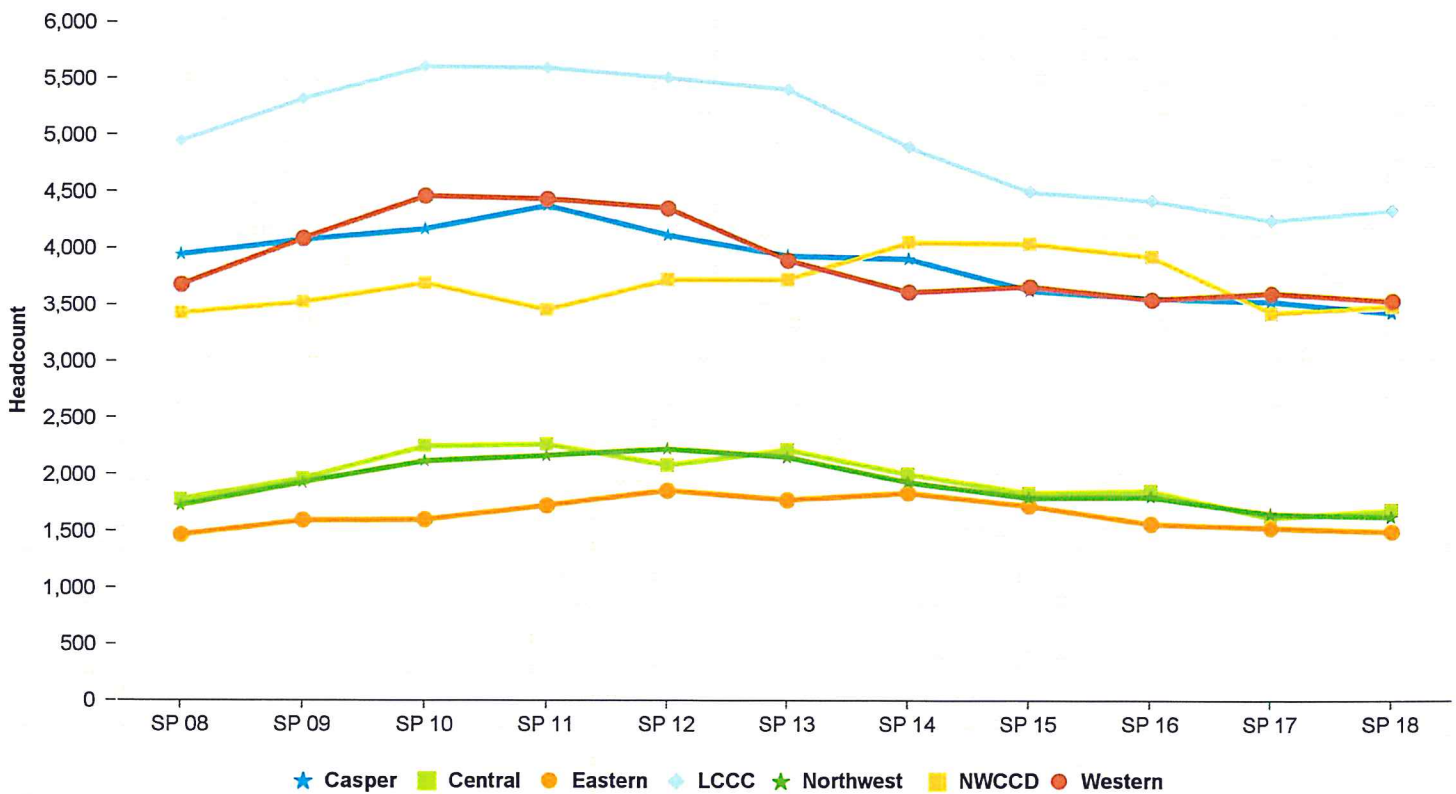


SPRING '18 ENROLLMENT REPORT

Table 9: History of Headcount

Semester	Casper	Central	Eastern	LCCC	Northwest	NWCCD	Western	TOTAL	Percent Change
SPRING 08	3,945	1,779	1,466	4,948	1,727	3,422	3,676	20,963	N/A
SPRING 09	4,076	1,964	1,597	5,322	1,931	3,521	4,086	22,497	7.3%
SPRING 10	4,173	2,250	1,603	5,609	2,120	3,691	4,462	23,908	6.3%
SPRING 11	4,380	2,268	1,731	5,600	2,170	3,453	4,437	24,039	0.5%
SPRING 12	4,120	2,084	1,863	5,512	2,228	3,722	4,355	23,884	-0.6%
SPRING 13	3,938	2,220	1,780	5,411	2,157	3,723	3,896	23,125	-3.2%
SPRING 14	3,912	2,006	1,842	4,901	1,936	4,053	3,617	22,267	-3.7%
SPRING 15	3,635	1,841	1,729	4,504	1,801	4,042	3,669	21,221	-4.7%
SPRING 16	3,567	1,861	1,570	4,430	1,809	3,927	3,555	20,719	-2.4%
SPRING 17	3,540	1,623	1,536	4,250	1,658	3,430	3,610	19,647	-5.2%
SPRING 18	3,438	1,692	1,499	4,343	1,633	3,490	3,540	19,635	-0.1%
10-Yr Change	-12.9%	-4.9%	2.3%	-12.2%	-5.4%	2.0%	-3.7%	-6.3%	
5-Yr Change	-12.7%	-23.8%	-15.8%	-19.7%	-24.3%	-6.3%	-9.1%	-15.1%	
1-Yr Change	-2.9%	4.3%	-2.4%	2.2%	-1.5%	1.7%	-1.9%	-0.1%	

Source: Wyoming Community College Commission



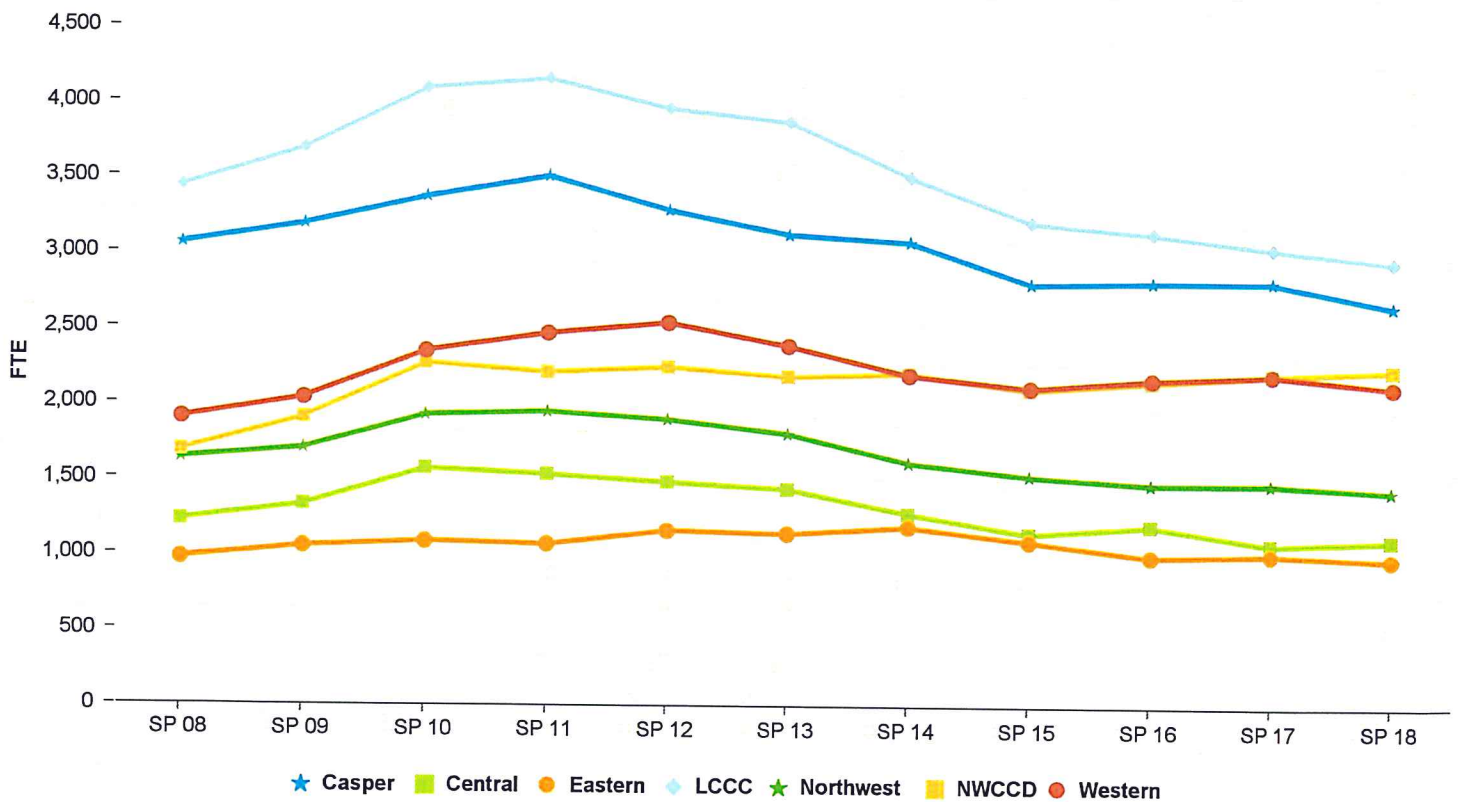


SPRING '18 ENROLLMENT REPORT

Table 10: History of FTE Enrollment

Semester	Casper	Central	Eastern	LCCC	Northwest	NWCCD	Western	TOTAL	Percent Change
SPRING 08	3,061.6	1,225.3	975.6	3,441.2	1,636.0	1,684.8	1,904.1	13,928.6	N/A
SPRING 09	3,191.3	1,330.1	1,055.4	3,695.8	1,704.0	1,906.3	2,040.7	14,923.6	7.1%
SPRING 10	3,374.1	1,570.2	1,090.4	4,095.2	1,927.2	2,268.6	2,351.4	16,677.1	11.7%
SPRING 11	3,513.4	1,533.0	1,071.6	4,158.7	1,950.2	2,208.7	2,469.3	16,904.9	1.4%
SPRING 12	3,289.3	1,485.0	1,164.4	3,963.1	1,900.0	2,246.5	2,543.4	16,591.6	-1.9%
SPRING 13	3,131.5	1,442.3	1,145.7	3,876.4	1,808.9	2,185.7	2,390.8	15,981.3	-3.7%
SPRING 14	3,084.4	1,283.1	1,194.8	3,515.4	1,620.8	2,211.0	2,203.2	15,112.7	-5.4%
SPRING 15	2,810.9	1,149.0	1,100.9	3,216.4	1,533.2	2,104.3	2,121.6	14,036.2	-7.1%
SPRING 16	2,825.7	1,206.0	1,003.2	3,145.1	1,482.7	2,158.7	2,179.8	14,001.3	-0.2%
SPRING 17	2,827.3	1,083.8	1,021.8	3,049.5	1,487.0	2,211.0	2,212.7	13,893.1	-0.8%
SPRING 18	2,667.2	1,113.9	986.2	2,958.0	1,440.9	2,240.5	2,131.7	13,538.4	-2.6%
10-Yr Change	-12.9%	-9.1%	1.1%	-14.0%	-11.9%	33.0%	12.0%	-2.8%	
5-Yr Change	-14.8%	-22.8%	-13.9%	-23.7%	-20.3%	2.5%	-10.8%	-15.3%	
1-Yr Change	-5.7%	2.8%	-3.5%	-3.0%	-3.1%	1.3%	-3.7%	-2.6%	

Source: Wyoming Community College Commission



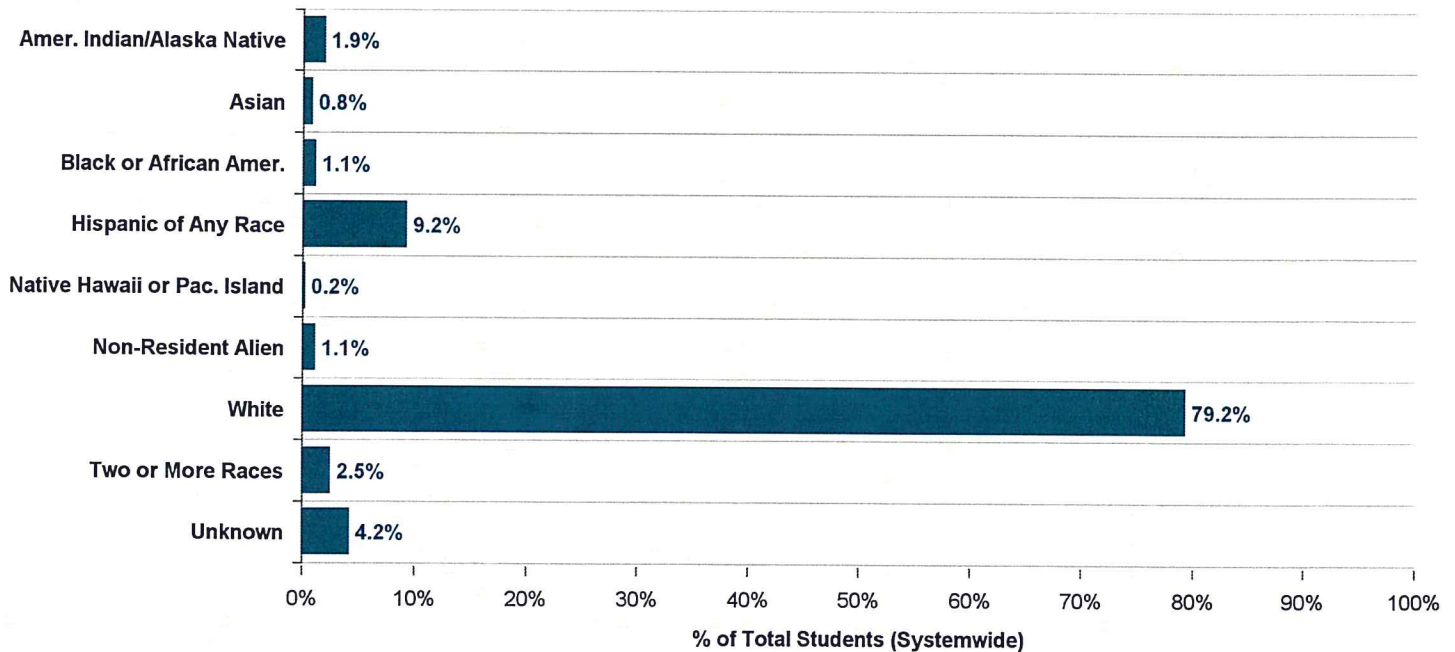


SPRING '18 ENROLLMENT REPORT

Table 11: Headcount by Race/Ethnicity

Race/Ethnicity	Casper	Central	Eastern	LCCC	Northwest	NWCCD	Western	Total	%
Amer. Indian/Alaska Native	29	189	13	32	7	61	37	368	1.9%
Asian	30	13	10	44	6	23	23	149	0.8%
Black or African Amer.	32	9	11	74	17	27	39	209	1.1%
Hispanic of Any Race	250	116	118	569	113	220	419	1,805	9.2%
Native Hawaii or Pac. Island	2	2	2	13	3	6	5	33	0.2%
Non-Resident Alien	22	3	17	29	62	21	61	215	1.1%
White	2,886	1,119	1,311	2,967	1,376	3,039	2,857	15,555	79.2%
Two or More Races	76	44	17	123	46	92	85	483	2.5%
Unknown	111	197	0	492	3	1	14	818	4.2%
Total	3,438	1,692	1,499	4,343	1,633	3,490	3,540	19,635	100.0%

Source: Wyoming Community College Commission





SPRING '18 ENROLLMENT REPORT

Table 12: Scope of Non-Credit Service Headcount

Non-credit service headcount data is currently being redefined by the Data Governance, Institutional Research Council to provide more pertinent and useful information.



SPRING '18 ENROLLMENT REPORT

Table 13: Students Auditing Courses

Credit Headcount			FTE		
College	Exclusively Auditing	*Credit Students Auditing	College	Exclusively Auditing	*Credit Students Auditing
Casper	204	55	Casper	42.4	67.3
Central	56	29	Central	15.1	27.0
Eastern	108	35	Eastern	9.9	46.5
LCCC	135	16	LCCC	28.7	17.8
Northwest	40	11	Northwest	5.8	10.4
NWCCD	39	5	NWCCD	7.6	5.7
Western	41	3	Western	7.7	3.4
Total	623	154	Total	117.2	178.2

* Represents students taking audit hours within regular course schedule
 Source: Wyoming Community College Commission



SPRING '18 ENROLLMENT REPORT

Table 14: Alternative Delivery Courses

Enrollment and Credit Hours	Casper	Central	Eastern	LCCC	Northwest	NWCCD	Western	System Total
Concurrent Enrollment Headcount	183	281	592	1,028	160	485	622	3,351
% of total students enrolled in Concurrent Enrollment credits	5.3%	16.6%	39.5%	23.7%	9.8%	13.9%	17.6%	17.1%
Concurrent Enrollment student credit hours	674.5	955.0	2,758.0	4,204.0	561.0	1,541.0	2,494.0	13,187.5
% of total student credit hours	2.1%	7.1%	23.3%	11.8%	3.2%	5.7%	9.7%	8.1%
Dual Enrollment Headcount	251	163	195	267	237	163	360	1,636
% of total students enrolled in 1+ credits as Dual Enrollment	7.3%	9.6%	13.0%	6.1%	14.5%	4.7%	10.2%	8.3%
Dual Enrollment student credit hours	1,253.5	699.0	833.0	927.0	1,093.0	829.0	1,294.0	6,928.5
% of total student credit hours	3.9%	5.2%	7.0%	2.6%	6.3%	3.1%	5.1%	4.3%
Remedial Headcount **	387	69	81	367	129	194	287	1,514
% of total students enrolled in 1+ remedial credits	11.3%	4.1%	5.4%	8.5%	7.9%	5.6%	8.1%	7.7%
Remedial student credit hours	1,758.0	229.0	252.0	1,440.0	295.0	788.0	1,270.0	6,032.0
% of total student credit hours	5.5%	1.7%	2.1%	4.1%	1.7%	2.9%	5.0%	3.7%

* Categories are not mutually exclusive. The same student could be enrolled in more than one of the above categories.

** Includes sections with Course Levels of DEV, DV, DVST, and REM.

*** English includes ENG courses and sections with course titles containing the terms Writing, Spelling, Grammar, and Reading. Math includes course titles w/ Math, Algebra, and Arithmetic.



SPRING '18 ENROLLMENT REPORT

Table 15: Distance Education

Enrollment and Credit Hours	Gasper	Central	Eastern	LCCC	Northwest	NWCCD	Western	System Total
Distance Education Headcount *	1,631	838	440	1,575	770	1,054	1,661	7,969
% of total students enrolled in 1+ distance education credits	47.4%	49.5%	29.4%	36.3%	47.2%	30.2%	46.9%	40.6%
Distance Education student credit hours	8,275	3,888	2,213	8,334	3,413	5,369	8,797	40,289
% of total student credit hours	25.9%	29.1%	18.7%	23.5%	19.7%	20.0%	34.4%	24.8%

* Sections with Schedule Types of Internet (NET), Interactive Video (IV), HYBD (Hybrid Distance), HN (High School Concurrent Online), and Telecourse (TV).