

*Wyoming Community College Commission*

**Commissioners**

**Mr. Gregg Blikre, Gillette**  
**Mr. Dennis Boal, Evanston**  
**Ms. Katherine Dooley, Powell**  
**Dr. Craig Frederick, Guernsey**  
**Dr. Jackie Freeze, Rock Springs**  
**Ms. Julia Newman, Torrington**  
**Ms. Ember Oakley, Riverton**

**Ex-officios**

**Governor Mark Gordon**  
**State Superintendent Jillian Balow**  
**Executive Director**  
**Dr. Sandra Caldwell**  
**Phone: 307-777-7763**  
**Fax: 307-777-6567**  
**[www.communitycolleges.wy.edu](http://www.communitycolleges.wy.edu)**

*2300 Capitol Avenue, 5th Floor - Suite B, Cheyenne, Wyoming 82002*



**WYOMING**  
**COMMUNITY COLLEGES**

**Wyoming Community College System**  
**Spring 2020**  
**Term Enrollment Report**

---

***Casper College ~ Central Wyoming College ~ Eastern Wyoming College***  
***Laramie County Community College ~ Northwest College***  
***Northern Wyoming Community College District***  
***Western Wyoming Community College***

WYOMING COMMUNITY COLLEGE SYSTEM  
SPRING 2020 ENROLLMENT REPORT

This report provides a look at the Spring 2020 term enrollment in categories such as student load, location and demographics of the community college student population. The content and format of this report have been developed through a collaborative effort between the Wyoming Community College Commission (WCCC), the Executive Council and the Data Governance/Institutional Research Council members representing the seven community colleges.

Effective with the summer 2016 reporting term, data were extracted from the Central Station Instance (CSI) using one report rather than consolidating individual customized reports from all seven colleges. All enrollment reports have the foundation of:

- Student enrollment being counted the day after 12% of each course has been completed.
- "Full-time equivalency means the number of approved academic or vocational-technical credit hours for each class for which students are enrolled divided by twelve (12)". W.S. 21-18-102 (a)(xii).
- Student headcount includes students who are enrolled for a letter grade, pass/fail designation as well as those who are auditing a course.
- "Duplicated headcount" means that within a survey or polling exercise of numerous programs and/or courses, a student may be counted more than once". WCCC Rules-2015
- "Unduplicated headcount" means that within a survey or polling exercise of numerous programs and/or courses, a student shall be counted only once". WCCC Rules- 2015
- "Concurrent enrollment course" means a college course taught by high school faculty who have been approved as community college adjunct faculty and who are teaching said course as part of their duties as a school district employee. As such, these college courses simultaneously satisfy high school graduation requirements. These courses have been approved by the community college as having equivalent course content, learning objectives and work assignments as an existing college course. Course content and learning objectives are equivalent to the related community college course as determined and defined by community college faculty. WCCC Rules- 2017
- "Dual enrollment credit" means credit given to qualified high school students who complete college level courses for which the community college hires and pays the instructor and in which the school district agrees to allow high school graduation credit. WCCC Rules- 2017

\*Full-time equivalencies (FTE) reported in tables 1, 5, 7b, 8 and 10 may vary slightly due to rounding in the enrollment calculations.

\*\*The data presented in this report may vary from enrollment reports posted on Wyoming college websites due to extraction date and sub-set parameter differences.

For additional information and discussion regarding this report, please refer to the Wyoming Community College Commission's meeting minutes for August 28, 2020 located on the Commission's website at <http://communitycolleges.wy.edu>.





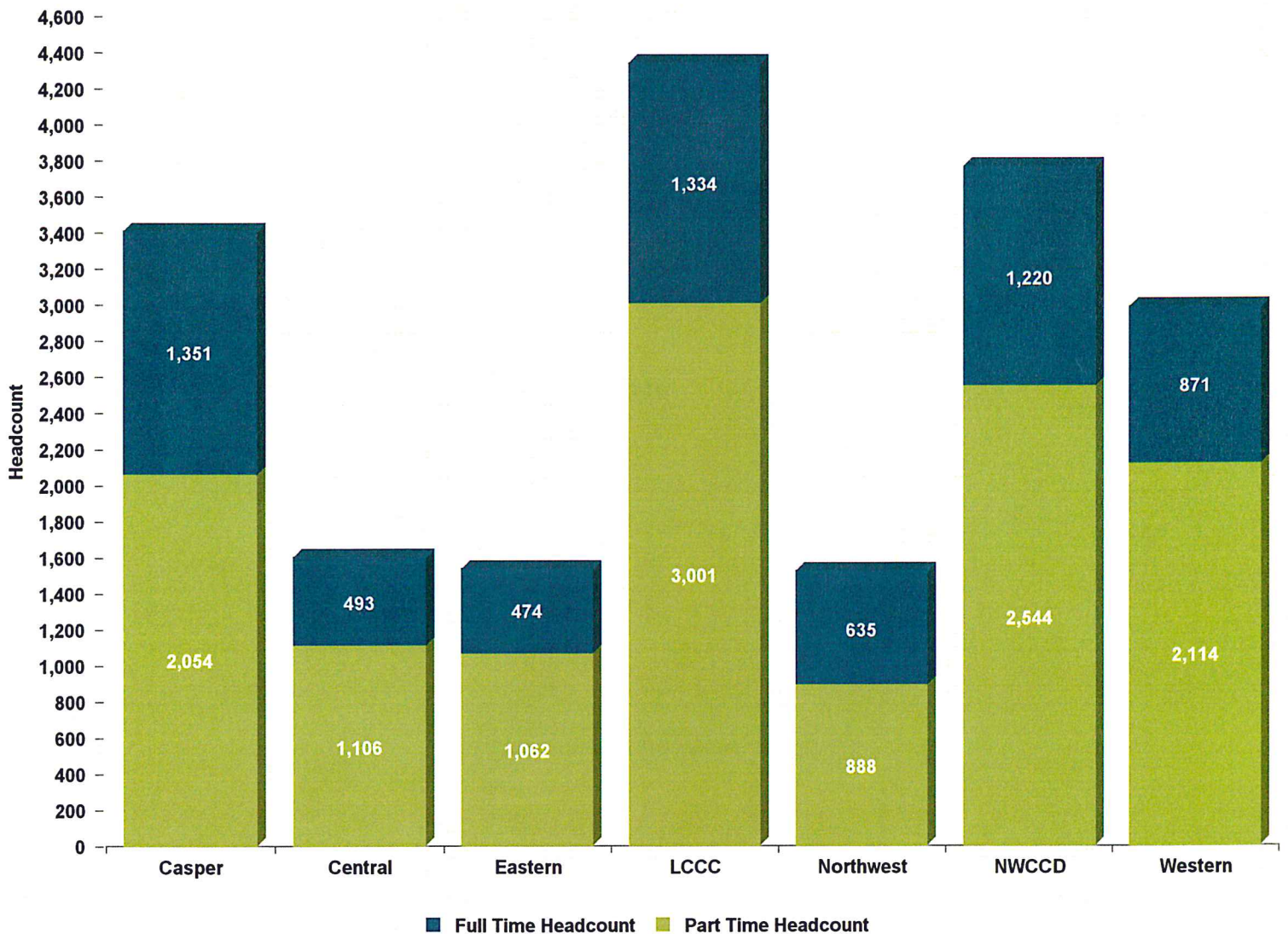
# SPRING '20 ENROLLMENT REPORT

Table 1: Credit Headcount & FTE

College	CREDIT HEADCOUNT			
	Full Time	Part Time	Total	%
Casper	1,351	2,054	3,405	17.8%
Central	493	1,106	1,599	8.4%
Eastern	474	1,062	1,536	8.0%
LCCC	1,334	3,001	4,335	22.6%
Northwest	635	888	1,523	8.0%
NWCCD	1,220	2,544	3,764	19.7%
Western	871	2,114	2,985	15.6%
<b>Total</b>	<b>6,378</b>	<b>12,769</b>	<b>19,147</b>	<b>100.0%</b>
Percent	33.3%	66.7%	100.0%	

College	CREDIT FTE			
	Full Time	Part Time	Total	%
Casper	1,657.2	959.1	2,616.3	20.3%
Central	604.7	417.5	1,022.2	7.9%
Eastern	605.8	390.9	996.8	7.7%
LCCC	1,621.7	1,303.1	2,924.8	22.7%
Northwest	798.3	388.5	1,186.8	9.2%
NWCCD	1,495.2	765.0	2,260.2	17.6%
Western	1,092.4	762.4	1,854.8	14.4%
<b>Total</b>	<b>7,875.3</b>	<b>4,986.5</b>	<b>12,861.8</b>	<b>100.0%</b>
Percent	61.2%	38.8%	100.0%	

Source: Wyoming Community College Commission





# SPRING '20 ENROLLMENT REPORT

Table 2: Credit Headcount by Age

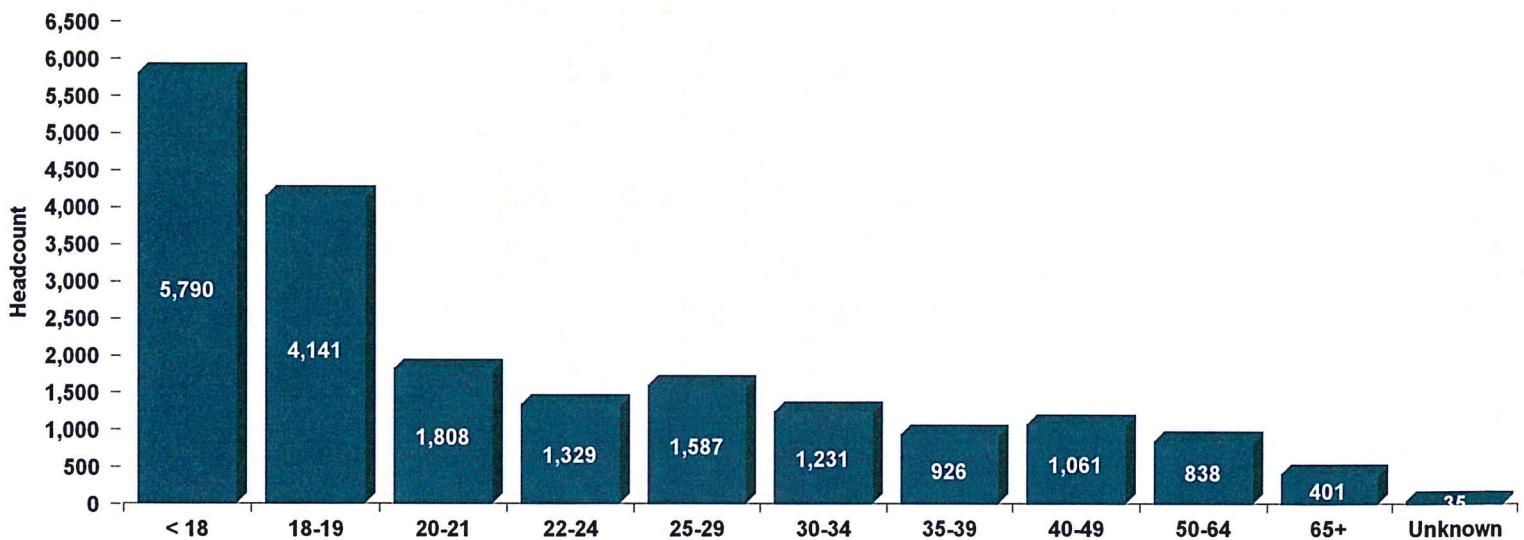
College	< 18	18-19	20-21	22-24	25-29	30-34	35-39	40-49	50-64	65+	Unknown	TOTAL
Casper	630	817	431	339	361	269	170	183	115	89	1	3,405
Central	409	329	107	117	163	140	97	106	81	50	0	1,599
Eastern	753	296	92	53	80	51	45	67	53	46	0	1,536
LCCC	1,466	911	474	357	393	234	173	156	95	75	1	4,335
Northwest	453	423	163	93	100	76	57	61	53	43	1	1,523
NWCCD	877	798	312	208	292	297	243	308	332	70	27	3,764
Western	1,202	567	229	162	198	164	141	180	109	28	5	2,985
<b>Total</b>	<b>5,790</b>	<b>4,141</b>	<b>1,808</b>	<b>1,329</b>	<b>1,587</b>	<b>1,231</b>	<b>926</b>	<b>1,061</b>	<b>838</b>	<b>401</b>	<b>35</b>	<b>19,147</b>
Percent	30.2%	21.6%	9.4%	6.9%	8.3%	6.4%	4.8%	5.5%	4.4%	2.1%	0.2%	100.0%

Average Age	Casper	Central	Eastern	LCCC	Northwest	NWCCD	Western	Systemwide
Female	25.7	27.0	22.2	23.2	25.0	24.0	22.6	24.1
Male	25.6	26.5	24.3	22.7	22.5	31.2	24.5	25.9
Full Time	22.7	22.2	21.4	22.7	21.2	21.7	21.7	22.1
Part Time	27.6	28.8	23.8	23.2	26.0	30.8	24.2	26.3
<b>Total</b>	<b>25.7</b>	<b>26.8</b>	<b>23.1</b>	<b>23.0</b>	<b>24.0</b>	<b>27.8</b>	<b>23.5</b>	<b>24.9</b>

Median Age	Casper	Central	Eastern	LCCC	Northwest	NWCCD	Western	Systemwide
Female	21	20	17	19	19	19	18	19
Male	20	21	18	19	19	25	19	19
Full Time	19	19	19	19	19	19	19	19
Part Time	22	23	17	18	18	26	17	20
<b>Total</b>	<b>20</b>	<b>21</b>	<b>18</b>	<b>19</b>	<b>19</b>	<b>20</b>	<b>18</b>	<b>19</b>

Students with unreported birth dates are excluded. The male and female statistics exclude students with unreported gender.  
 Source: Wyoming Community College Commission







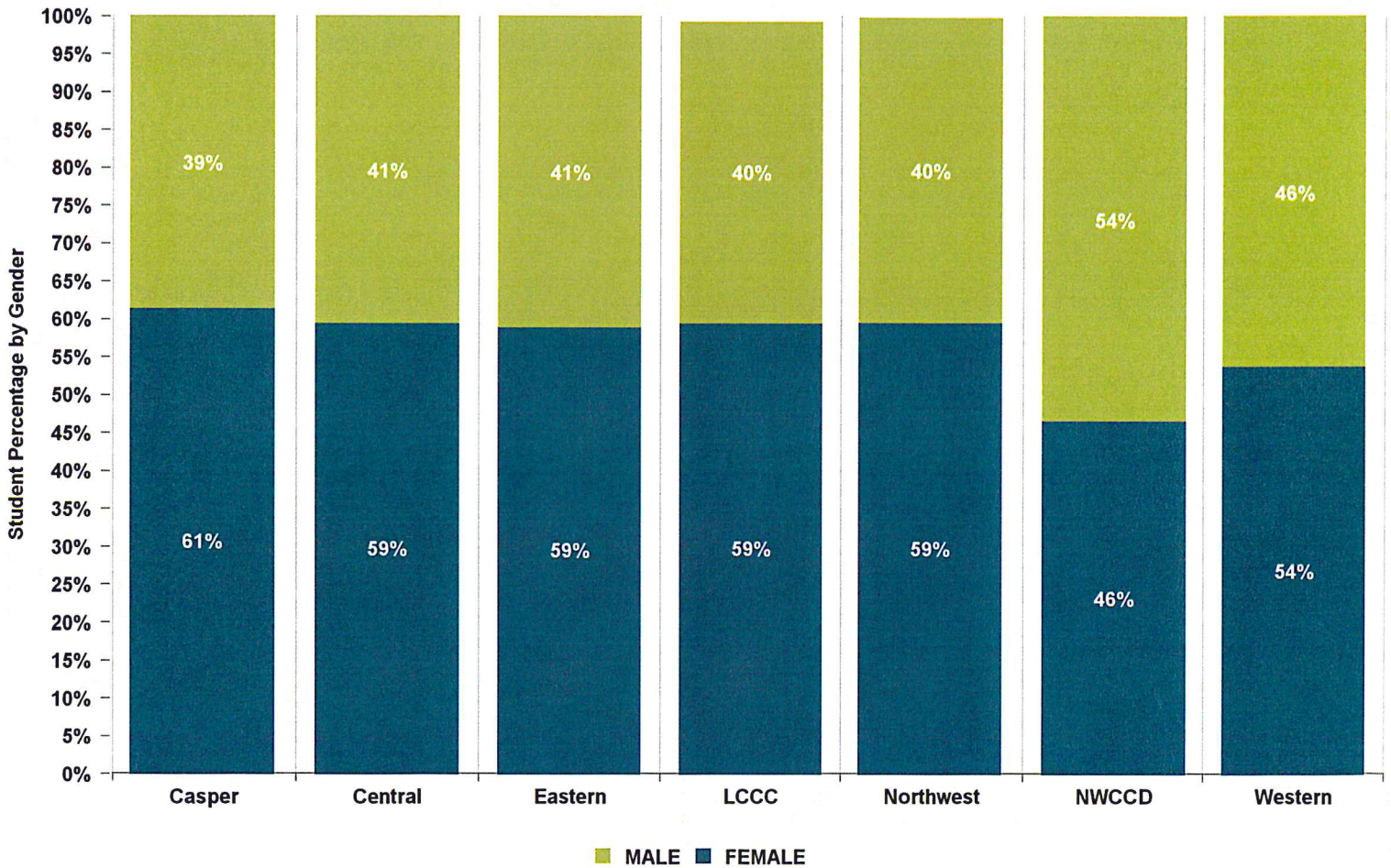
# SPRING '20 ENROLLMENT REPORT

Table 3: Credit Headcount by Gender

College	SPRING				TOTAL
	Male	% Male	Female	% Female	
Casper	1,319	38.7%	2,086	61.3%	3,405
Central	650	40.7%	949	59.3%	1,599
Eastern	632	41.1%	904	58.9%	1,536
LCCC	1,728	39.9%	2,572	59.3%	4,335
Northwest	614	40.3%	905	59.4%	1,523
NWCCD	2,015	53.5%	1,749	46.5%	3,764
Western	1,382	46.3%	1,603	53.7%	2,985
<b>Total</b>	<b>8,340</b>	<b>43.6%</b>	<b>10,768</b>	<b>56.2%</b>	<b>19,147</b>

These data do not reflect those not reported as male or female.

Source: Wyoming Community College Commission







# SPRING '20 ENROLLMENT REPORT

Table 4: Credit Headcount by Residency

County	Casper	Central	Eastern	LCCC	Northwest	NWCCD	Western	Total	% of In-State	County Pop.**	****Credit Students as % of Pop.
Albany	55	15	12	<u>684</u>	3	19	6	794	4.7%	38,680	2.1%
Big Horn	23	4	4	6	<u>307</u>	30	1	375	2.2%	12,040	3.1%
Campbell	73	5	17	19	12	<u>1,651</u>	3	1,780	10.5%	48,890	3.6%
Carbon	60	38	9	39	4	32	<u>192</u>	374	2.2%	15,730	2.4%
Converse	140	15	<u>322</u>	9	5	18	0	509	3.0%	14,280	3.6%
Crook	16	4	<u>114</u>	4	1	110	0	249	1.5%	7,560	3.3%
Fremont	89	<u>921</u>	11	14	4	38	14	1,091	6.4%	40,000	2.7%
Goshen	26	2	<u>411</u>	47	2	3	1	492	2.9%	13,330	3.7%
Hot Springs	16	<u>50</u>	3	4	10	5	0	88	0.5%	4,640	1.9%
Johnson	31	2	6	9	5	<u>174</u>	0	227	1.3%	8,450	2.7%
Laramie	93	23	41	<u>2,817</u>	10	24	6	3,014	17.8%	99,650	3.0%
Lincoln	12	33	3	11	5	4	<u>282</u>	350	2.1%	19,540	1.8%
Natrona	<u>2,218</u>	28	26	29	5	46	11	2,363	13.9%	81,800	2.9%
Niobrara	13	4	<u>20</u>	4	2	7	0	50	0.3%	2,460	2.0%
Park	22	11	7	13	<u>738</u>	42	5	838	4.9%	29,590	2.8%
Platte	40	3	<u>181</u>	27	1	6	2	260	1.5%	8,730	3.0%
Sheridan	38	9	7	7	5	<u>932</u>	1	999	5.9%	30,590	3.3%
Sublette	14	12	6	5	7	5	<u>170</u>	219	1.3%	9,630	2.3%
Sweetwater	26	23	7	14	6	11	<u>1,644</u>	1,731	10.2%	43,830	3.9%
Teton	23	<u>181</u>	1	15	2	3	3	228	1.3%	23,740	1.0%
Uinta	21	19	5	42	22	6	<u>446</u>	561	3.3%	20,640	2.7%
Unknown	0	2	0	6	0	6	0	14	0.1%	n/a	n/a
Washakie	26	12	2	6	<u>72</u>	50	1	169	1.0%	8,160	2.1%
Weston	17	0	<u>134</u>	5	4	42	3	205	1.2%	7,290	2.8%
In Tax District	2,218	921	411	2,817	738	932	1,644	9,681			
In Service Area ***	0	231	771	684	379	1,825	1,090	4,980			
Out of Service Area	874	264	167	335	115	507	57	2,319			
<b>Total In-State</b>	<b>3,092</b>	<b>1,416</b>	<b>1,349</b>	<b>3,836</b>	<b>1,232</b>	<b>3,264</b>	<b>2,791</b>	<b>16,980</b>			
Border States *	141	77	126	360	146	348	113	1,311			
All Other States	140	92	35	112	88	116	43	626			
International	32	14	26	27	57	36	38	230			
<b>Total</b>	<b>3,405</b>	<b>1,599</b>	<b>1,536</b>	<b>4,335</b>	<b>1,523</b>	<b>3,764</b>	<b>2,985</b>	<b>19,147</b>			
% In Tax District	65.1%	57.6%	26.8%	65.0%	48.5%	24.8%	55.1%	50.6%			
% In Service Area	0.0%	14.4%	50.2%	15.8%	24.9%	48.5%	36.5%	26.0%			
% Out of Service Area	25.7%	16.5%	10.9%	7.7%	7.6%	13.5%	1.9%	12.1%			
<b>% In-State</b>	<b>90.8%</b>	<b>88.6%</b>	<b>87.8%</b>	<b>88.5%</b>	<b>80.9%</b>	<b>86.7%</b>	<b>93.5%</b>	<b>88.7%</b>			
% Border States *	4.1%	4.8%	8.2%	8.3%	9.6%	9.2%	3.8%	6.8%			
% All Other States	4.1%	5.8%	2.3%	2.6%	5.8%	3.1%	1.4%	3.3%			
% International	0.9%	0.9%	1.7%	0.6%	3.7%	1.0%	1.3%	1.2%			

\* Border states include Colorado, Utah, Idaho, Montana, South Dakota, and Nebraska.

\*\* Wyoming Department of Administration and Information, Economic Analysis Division Estimate  
<http://eadiv.state.wy.us/pop/wyc&sc40.htm>

\*\*\* Casper is the only college with one service area.

\*\*\*\* Total In-State Credit Students as % of Population: 2.9%

**BOLD:**

College Location

**BLUE:**

College Service Area

Source: Wyoming Community College Commission



# SPRING '20 ENROLLMENT REPORT

Table 5: Credit FTE by Residency

WY County	Casper	Central	Eastern	LCCC	Northwest	NWCCD	Western	Total
Albany	35.0	7.3	11.7	<u>396.2</u>	2.3	12.8	2.6	467.7
Big Horn	22.4	3.9	5.8	4.8	<u>216.2</u>	21.1	0.3	274.5
Campbell	54.5	2.0	14.2	17.3	11.7	<u>808.3</u>	1.7	909.5
Carbon	57.0	20.2	8.4	38.1	5.8	16.3	<u>87.5</u>	233.3
Converse	118.7	7.6	<u>162.9</u>	6.8	4.3	9.2	0.0	309.5
Crook	14.9	1.4	<u>60.8</u>	3.3	1.0	58.3	0.0	139.7
Fremont	75.2	<b>585.0</b>	9.8	11.3	3.3	22.4	4.3	711.3
Goshen	21.5	2.5	<b>216.0</b>	31.6	1.7	0.5	1.7	275.5
Hot Springs	13.6	<u>23.9</u>	1.7	2.0	11.7	4.9	0.0	57.7
Johnson	15.2	2.3	5.4	8.7	5.4	<u>96.5</u>	0.0	133.5
Laramie	58.0	9.6	47.8	<b>1,770.2</b>	7.7	16.0	3.3	1,912.7
Lincoln	9.0	26.0	1.3	8.6	3.8	4.1	<u>153.0</u>	205.8
Natrona	<b>1,605.1</b>	14.1	23.0	20.2	2.3	35.5	6.9	1,707.0
Niobrara	14.7	4.2	<u>8.6</u>	4.0	3.1	6.4	0.0	40.9
Park	16.9	9.3	9.2	8.6	<b>506.0</b>	23.9	2.3	576.1
Platte	33.4	1.8	<u>107.7</u>	21.9	0.4	2.5	2.6	170.2
Sheridan	27.0	3.8	3.9	7.3	3.8	<b>558.2</b>	0.3	604.2
Sublette	13.1	5.4	6.4	4.7	7.0	5.3	<u>96.1</u>	137.9
Sweetwater	19.4	24.8	7.2	10.8	8.1	12.7	<b>1,004.9</b>	1,087.9
Teton	19.3	<u>88.8</u>	1.4	12.0	1.1	2.8	4.1	129.4
Uinta	17.2	15.8	5.6	18.6	7.3	7.9	<u>270.7</u>	343.1
Unknown	0.0	2.3	0.0	4.7	0.0	1.5	0.0	8.5
Washakie	26.3	8.0	2.6	5.9	<u>42.9</u>	49.0	0.7	135.3
Weston	19.8	0.0	<u>58.9</u>	3.9	2.4	22.7	3.0	110.7
<b>In Tax District</b>	<b>1,605.1</b>	<b>585.0</b>	<b>216.0</b>	<b>1,770.2</b>	<b>506.0</b>	<b>558.2</b>	<b>1,004.9</b>	<b>6,245.4</b>
In Service Area **	0.0	112.7	398.9	396.2	259.0	904.7	607.2	2,678.9
Out of Service Area	701.9	172.2	165.4	255.0	94.0	335.5	33.5	1,757.6
<b>Total In-State</b>	<b>2,307.0</b>	<b>869.9</b>	<b>780.3</b>	<b>2,421.5</b>	<b>859.0</b>	<b>1,798.5</b>	<b>1,645.7</b>	<b>10,681.9</b>
Border States *	144.69	69.13	150.33	376.17	170.04	313.42	117.29	1,341.07
All Other States	125.9	63.9	31.7	90.3	83.0	106.4	45.3	546.6
International	38.7	19.3	34.3	36.8	74.7	41.9	46.5	292.2
<b>Total</b>	<b>2,616.3</b>	<b>1,022.2</b>	<b>996.8</b>	<b>2,924.8</b>	<b>1,186.8</b>	<b>2,260.2</b>	<b>1,854.8</b>	<b>12,861.8</b>
% In Tax District	61.3%	57.2%	21.7%	60.5%	42.6%	24.7%	54.2%	48.6%
% In Service Area	0.0%	11.0%	40.0%	13.5%	21.8%	40.0%	32.7%	20.8%
% Out of Service Area	26.8%	16.8%	16.6%	8.7%	7.9%	14.8%	1.8%	13.7%
% In-State	88.2%	85.1%	78.3%	82.8%	72.4%	79.6%	88.7%	83.1%
% Border States *	5.5%	6.8%	15.1%	12.9%	14.3%	13.9%	6.3%	10.4%
% All Other States	4.8%	6.3%	3.2%	3.1%	7.0%	4.7%	2.4%	4.2%
% International	1.5%	1.9%	3.4%	1.3%	6.3%	1.9%	2.5%	2.3%

\* Border states include Colorado, Utah, Idaho, Montana, South Dakota, and Nebraska.

\*\* Casper is the only college with one service area.

Source: Wyoming Community College Commission





# SPRING '20 ENROLLMENT REPORT

Table 6A: Headcount by Credit Hours

Credit Hours	Casper	Central	Eastern	LCCC	Northwest	NWCCD	Western	Total	Percent
<1	5	58	6	0	9	771	221	1,070	5.6%
1	109	71	244	72	25	211	237	969	5.1%
2	61	92	51	190	33	63	69	559	2.9%
3	306	321	223	1,004	284	574	598	3,310	17.3%
<b>Sub Total</b>	<b>481</b>	<b>542</b>	<b>524</b>	<b>1,266</b>	<b>351</b>	<b>1,619</b>	<b>1,125</b>	<b>5,908</b>	<b>30.9%</b>
4	453	139	113	383	110	140	162	1,500	7.8%
5	200	22	34	68	45	29	40	438	2.3%
6	208	132	118	362	110	256	334	1,520	7.9%
<b>Sub Total</b>	<b>861</b>	<b>293</b>	<b>265</b>	<b>813</b>	<b>265</b>	<b>425</b>	<b>536</b>	<b>3,458</b>	<b>18.1%</b>
7	174	82	90	258	79	121	105	909	4.7%
8	149	47	33	109	40	61	62	501	2.6%
9	121	86	77	198	57	172	152	863	4.5%
<b>Sub Total</b>	<b>444</b>	<b>215</b>	<b>200</b>	<b>565</b>	<b>176</b>	<b>354</b>	<b>319</b>	<b>2,273</b>	<b>11.9%</b>
10	160	37	44	258	50	87	86	722	3.8%
11	108	19	29	99	46	59	48	408	2.1%
12	269	97	66	383	117	203	157	1,292	6.7%
<b>Sub Total</b>	<b>537</b>	<b>153</b>	<b>139</b>	<b>740</b>	<b>213</b>	<b>349</b>	<b>291</b>	<b>2,422</b>	<b>12.6%</b>
13	288	83	69	234	105	218	132	1,129	5.9%
14	209	69	76	184	89	236	116	979	5.1%
15	168	92	58	158	64	177	126	843	4.4%
<b>Sub Total</b>	<b>665</b>	<b>244</b>	<b>203</b>	<b>576</b>	<b>258</b>	<b>631</b>	<b>374</b>	<b>2,951</b>	<b>15.4%</b>
16	119	59	51	117	93	124	128	691	3.6%
17	104	31	68	84	50	128	72	537	2.8%
18	72	26	35	56	48	73	59	369	1.9%
<b>Sub Total</b>	<b>295</b>	<b>116</b>	<b>154</b>	<b>257</b>	<b>191</b>	<b>325</b>	<b>259</b>	<b>1,597</b>	<b>8.3%</b>
19	56	12	22	40	25	27	33	215	1.1%
20	23	10	7	14	24	12	12	102	0.5%
21	16	11	11	30	7	13	18	106	0.6%
<b>Sub Total</b>	<b>95</b>	<b>33</b>	<b>40</b>	<b>84</b>	<b>56</b>	<b>52</b>	<b>63</b>	<b>423</b>	<b>2.2%</b>
>21	27	3	11	34	13	9	18	115	0.6%
<b>Sub Total</b>	<b>27</b>	<b>3</b>	<b>11</b>	<b>34</b>	<b>13</b>	<b>9</b>	<b>18</b>	<b>115</b>	<b>0.6%</b>
<b>Total</b>	<b>3,405</b>	<b>1,599</b>	<b>1,536</b>	<b>4,335</b>	<b>1,523</b>	<b>3,764</b>	<b>2,985</b>	<b>19,147</b>	<b>100.0%</b>

Credit Hour bands are not displayed if there were no students associated with that particular number of credit hours.

Source: Wyoming Community College Commission





# SPRING '20 ENROLLMENT REPORT

Table 6B: Headcount by Credit Hours

Credit Hours	Casper	Central	Eastern	LCCC	Northwest	NWCCD	Western	Total	Percent
<1	5	58	6	0	9	771	221	1,070	5.6%
1	109	71	244	72	25	211	237	969	5.1%
2	61	92	51	190	33	63	69	559	2.9%
3	306	321	223	1,004	284	574	598	3,310	17.3%
4	453	139	113	383	110	140	162	1,500	7.8%
5	200	22	34	68	45	29	40	438	2.3%
<b>Sub Total</b>	<b>1,134</b>	<b>703</b>	<b>671</b>	<b>1,717</b>	<b>506</b>	<b>1,788</b>	<b>1,327</b>	<b>7,846</b>	<b>41.0%</b>
6	208	132	118	362	110	256	334	1,520	7.9%
7	174	82	90	258	79	121	105	909	4.7%
8	149	47	33	109	40	61	62	501	2.6%
9	121	86	77	198	57	172	152	863	4.5%
10	160	37	44	258	50	87	86	722	3.8%
11	108	19	29	99	46	59	48	408	2.1%
<b>Sub Total</b>	<b>920</b>	<b>403</b>	<b>391</b>	<b>1,284</b>	<b>382</b>	<b>756</b>	<b>787</b>	<b>4,923</b>	<b>25.7%</b>
12	269	97	66	383	117	203	157	1,292	6.7%
13	288	83	69	234	105	218	132	1,129	5.9%
14	209	69	76	184	89	236	116	979	5.1%
15	168	92	58	158	64	177	126	843	4.4%
<b>Sub Total</b>	<b>934</b>	<b>341</b>	<b>269</b>	<b>959</b>	<b>375</b>	<b>834</b>	<b>531</b>	<b>4,243</b>	<b>22.2%</b>
16	119	59	51	117	93	124	128	691	3.6%
17	104	31	68	84	50	128	72	537	2.8%
18	72	26	35	56	48	73	59	369	1.9%
<b>Sub Total</b>	<b>295</b>	<b>116</b>	<b>154</b>	<b>257</b>	<b>191</b>	<b>325</b>	<b>259</b>	<b>1,597</b>	<b>8.3%</b>
19	56	12	22	40	25	27	33	215	1.1%
20	23	10	7	14	24	12	12	102	0.5%
21	16	11	11	30	7	13	18	106	0.6%
>21	27	3	11	34	13	9	18	115	0.6%
<b>Sub Total</b>	<b>122</b>	<b>36</b>	<b>51</b>	<b>118</b>	<b>69</b>	<b>61</b>	<b>81</b>	<b>538</b>	<b>2.8%</b>
<b>Total</b>	<b>3,405</b>	<b>1,599</b>	<b>1,536</b>	<b>4,335</b>	<b>1,523</b>	<b>3,764</b>	<b>2,985</b>	<b>19,147</b>	<b>100.0%</b>

Credit Hour bands are not displayed if there were no students associated with that particular number of credit hours.  
 Source: Wyoming Community College Commission



# SPRING '20 ENROLLMENT REPORT

Table 7a: Credit Headcount by Program of Study

College	Full Time			Part Time			Total		
	Transfer Preparation*	Career & Technical Education (CTE)**	Not Seeking Degree or Certificate	Transfer Preparation*	Career & Technical Education (CTE)**	Not Seeking Degree or Certificate	Transfer Preparation*	Career & Technical Education (CTE)**	Not Seeking Degree or Certificate
Casper	955	299	97	602	192	1,260	1,557	491	1,357
Central	303	179	11	169	258	679	472	437	690
Eastern	206	176	92	139	43	880	345	219	972
LCCC	987	314	33	976	220	1,805	1,963	534	1,838
Northwest	481	134	20	195	69	624	676	203	644
NWCCD	859	316	45	447	1,121	976	1,306	1,437	1,021
Western	463	321	87	283	269	1,562	746	590	1,649
<b>Total</b>	<b>4,254</b>	<b>1,739</b>	<b>385</b>	<b>2,811</b>	<b>2,172</b>	<b>7,786</b>	<b>7,065</b>	<b>3,911</b>	<b>8,171</b>
<b>Percent</b>	<b>66.7%</b>	<b>27.3%</b>	<b>6.0%</b>	<b>22.0%</b>	<b>17.0%</b>	<b>61.0%</b>	<b>36.9%</b>	<b>20.4%</b>	<b>42.7%</b>

\*Transfer Preparation programs provide students with the first two years of an education sequence designed to transition to a Bachelor's Degree program. Programs generally lead to an AA, AB, AFA or AS degree.

\*\*Career Technical programs are designed to prepare students for entry into a specific occupational area or advancement in the workplace immediately upon completion/graduation. Programs generally lead to Certificates or an ADN or AAS degree.

Source: Wyoming Community College Commission





# SPRING '20 ENROLLMENT REPORT

Table 7b: FTE by Program of Study

College	Full Time			Part Time			Total		
	Transfer Preparation*	Career & Technical Education (CTE)**	Not Seeking Degree or Certificate	Transfer Preparation*	Career & Technical Education (CTE)**	Not Seeking Degree or Certificate	Transfer Preparation*	Career & Technical Education (CTE)**	Not Seeking Degree or Certificate
Casper	1,161.4	385.9	109.9	348.1	127.5	483.5	1,509.4	513.4	593.5
Central	374.2	217.2	13.3	95.2	122.2	200.2	469.4	339.3	213.4
Eastern	260.3	234.3	111.2	76.2	18.4	296.3	336.5	252.8	407.5
LCCC	1,173.6	411.2	37.0	597.9	117.2	588.0	1,771.5	528.3	625.0
Northwest	604.7	171.8	21.8	110.3	46.1	232.0	715.0	217.8	253.9
NWCCD	1,041.3	400.6	53.3	264.8	167.0	333.3	1,306.1	567.6	386.5
Western	588.5	403.7	100.2	134.4	151.8	476.2	723.0	555.5	576.4
<b>Total</b>	<b>5,204.1</b>	<b>2,224.5</b>	<b>446.7</b>	<b>1,626.8</b>	<b>750.1</b>	<b>2,609.5</b>	<b>6,831.0</b>	<b>2,974.7</b>	<b>3,056.2</b>
<b>Percent</b>	<b>66.1%</b>	<b>28.2%</b>	<b>5.7%</b>	<b>32.6%</b>	<b>15.0%</b>	<b>52.3%</b>	<b>53.1%</b>	<b>23.1%</b>	<b>23.8%</b>

\*Transfer Preparation programs provide students with the first two years of an education sequence designed to transition to a Bachelor's Degree program. Programs generally lead to an AA, AB, AFA or AS degree.

\*\*Career Technical programs are designed to prepare students for entry into a specific occupational area or advancement in the workplace immediately upon completion/graduation. Programs generally lead to Certificates or an ADN or AAS degree.

Source: Wyoming Community College Commission

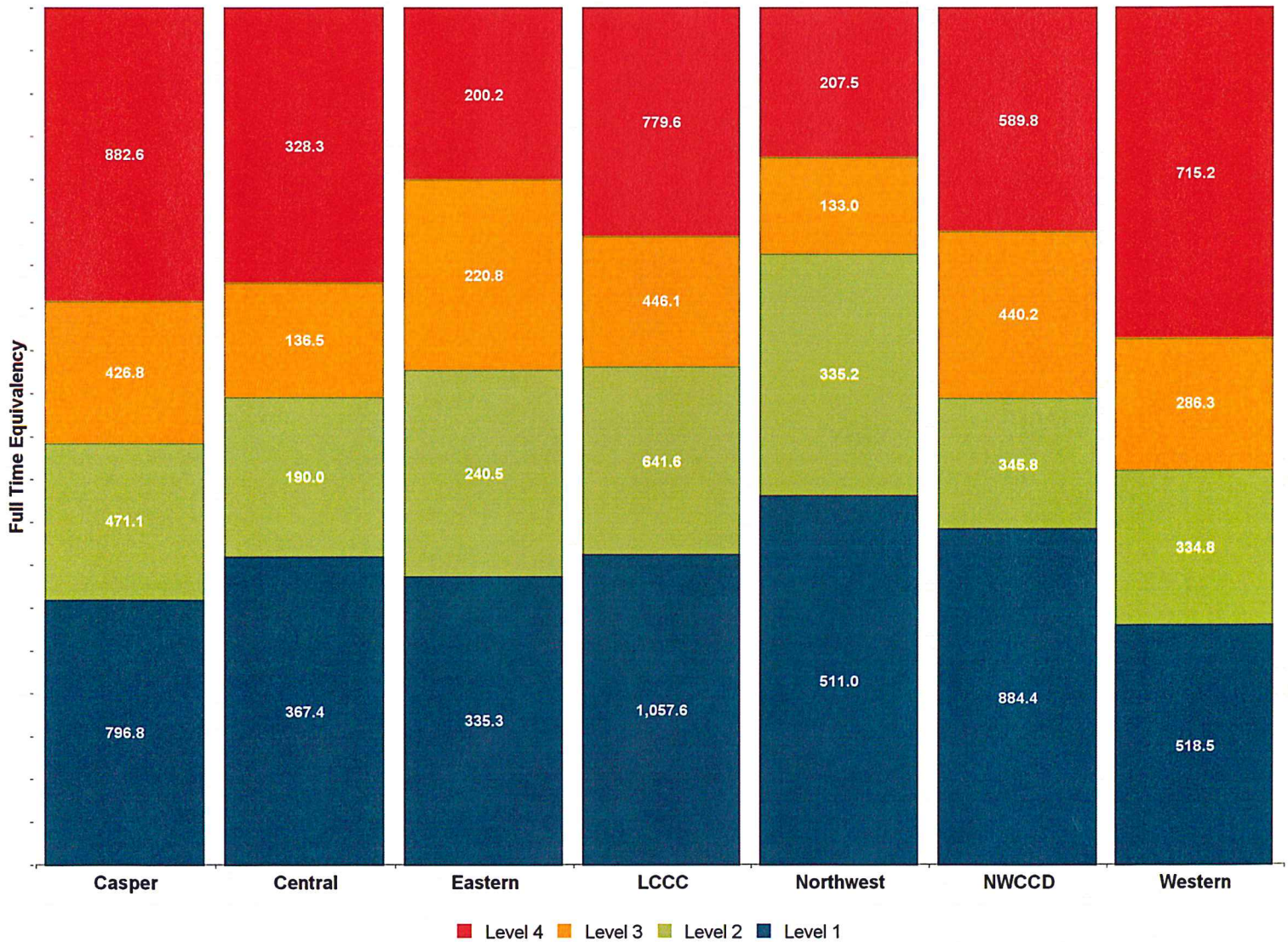


# SPRING '20 ENROLLMENT REPORT

Table 8: FTE Level of Instruction

College	Level 1 FTE	Level 2 FTE	Level 3 FTE	Level 4 FTE	Unknown Level	TOTAL
Casper	796.8	471.1	426.8	882.6	38.9	2,616.3
Central	367.4	190.0	136.5	328.2	0.0	1,022.2
Eastern	335.2	240.5	220.8	200.2	0.0	996.8
LCCC	1,057.6	641.6	446.1	779.6	0.0	2,924.8
Northwest	511.0	335.2	133.0	207.5	0.0	1,186.8
NWCCD	884.4	345.8	440.2	589.8	0.0	2,260.2
Western	518.5	334.8	286.3	715.2	0.0	1,854.8
<b>Total</b>	<b>4,471.0</b>	<b>2,559.1</b>	<b>2,089.8</b>	<b>3,703.0</b>	<b>38.9</b>	<b>12,861.8</b>

Level 1 = Lecture, Level 2 = Laboratory, Level 3 = High Technology, Level 4 = Distance  
 Source: Wyoming Community College Commission





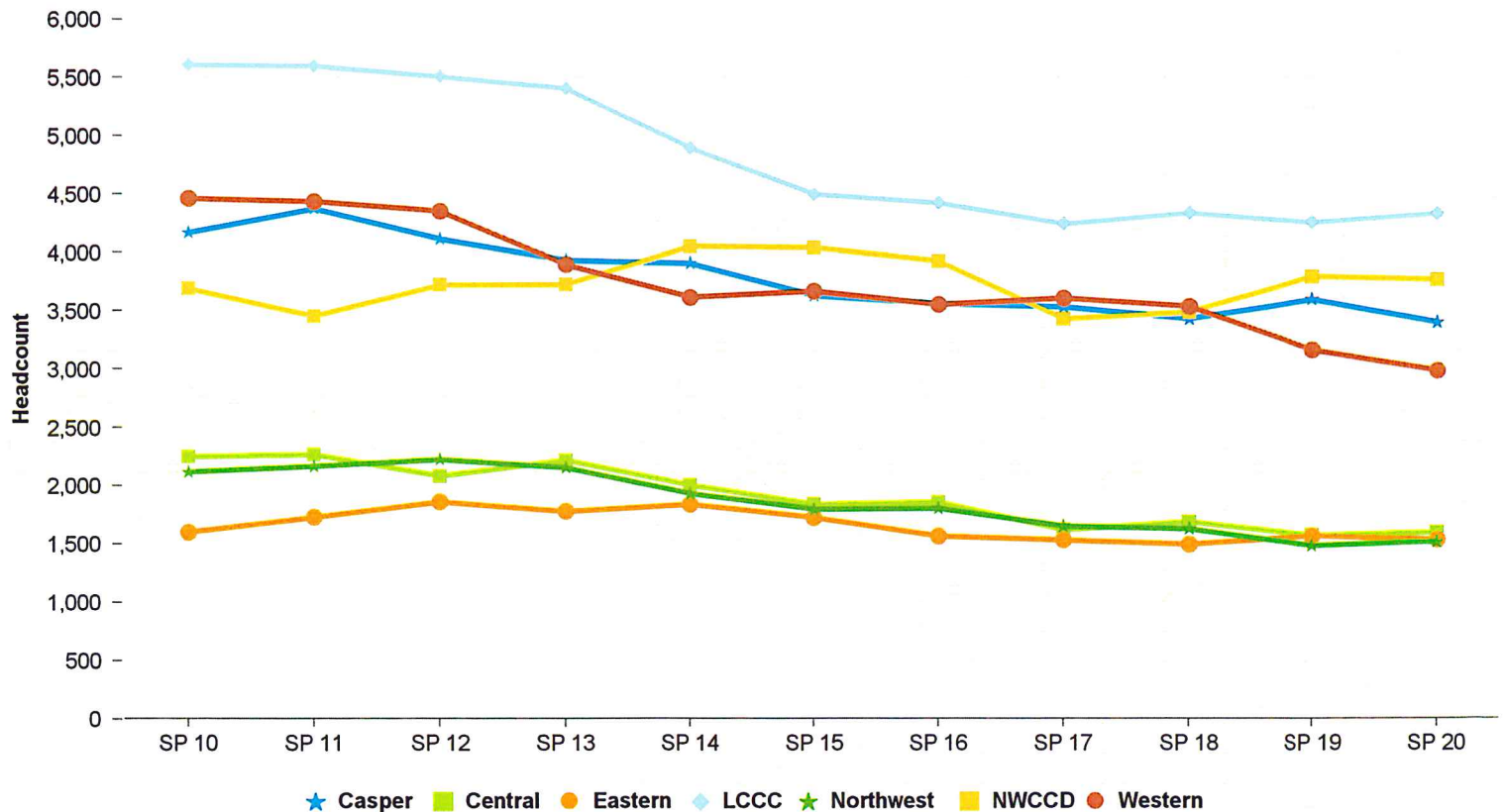


# SPRING '20 ENROLLMENT REPORT

Table 9: History of Headcount

Semester	Casper	Central	Eastern	LCCC	Northwest	NWCCD	Western	TOTAL	Percent Change
SPRING 10	4,173	2,250	1,603	5,609	2,120	3,691	4,462	23,908	N/A
SPRING 11	4,380	2,268	1,731	5,600	2,170	3,453	4,437	24,039	0.5%
SPRING 12	4,120	2,084	1,863	5,512	2,228	3,722	4,355	23,884	-0.6%
SPRING 13	3,938	2,220	1,780	5,411	2,157	3,723	3,896	23,125	-3.2%
SPRING 14	3,912	2,006	1,842	4,901	1,936	4,053	3,617	22,267	-3.7%
SPRING 15	3,635	1,841	1,729	4,504	1,801	4,042	3,669	21,221	-4.7%
SPRING 16	3,567	1,861	1,570	4,430	1,809	3,927	3,555	20,719	-2.4%
SPRING 17	3,540	1,623	1,536	4,250	1,658	3,430	3,610	19,647	-5.2%
SPRING 18	3,438	1,692	1,499	4,343	1,633	3,490	3,540	19,635	-0.1%
SPRING 19	3,602	1,573	1,571	4,260	1,488	3,792	3,163	19,449	-0.9%
SPRING 20	3,405	1,599	1,536	4,335	1,523	3,764	2,985	19,147	-1.6%
10-Yr Change	-18.4%	-28.9%	-4.2%	-22.7%	-28.2%	2.0%	-33.1%	-19.9%	
5-Yr Change	-6.3%	-13.1%	-11.2%	-3.8%	-15.4%	-6.9%	-18.6%	-9.8%	
1-Yr Change	-5.5%	1.7%	-2.2%	1.8%	2.4%	-0.7%	-5.6%	-1.6%	

Source: Wyoming Community College Commission



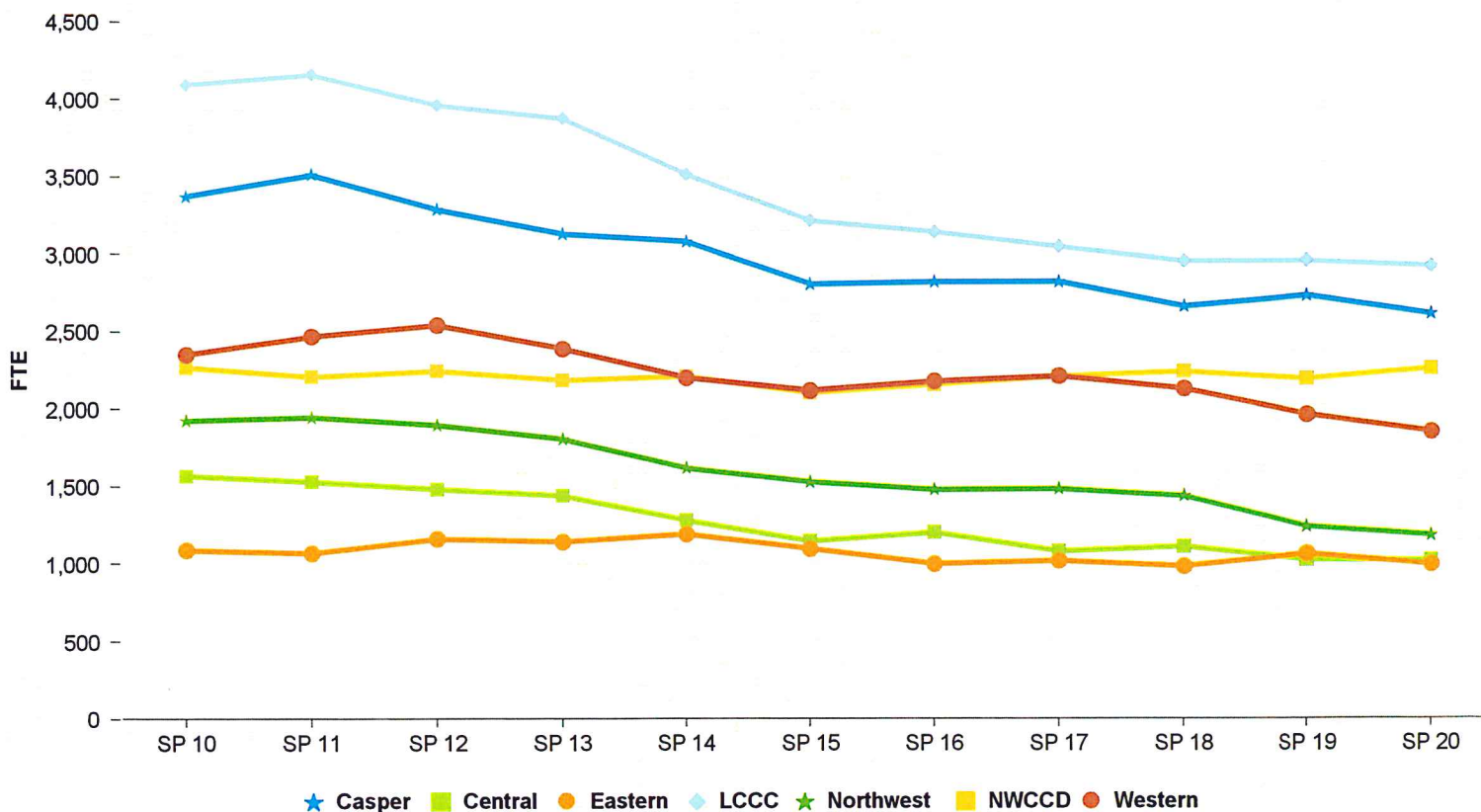


# SPRING '20 ENROLLMENT REPORT

Table 10: History of FTE Enrollment

Semester	Casper	Central	Eastern	LCCC	Northwest	NWCCD	Western	TOTAL	Percent Change
SPRING 10	3,374.1	1,570.2	1,090.4	4,095.2	1,927.2	2,268.6	2,351.4	16,677.1	N/A
SPRING 11	3,513.4	1,533.0	1,071.6	4,158.7	1,950.2	2,208.7	2,469.3	16,904.9	1.4%
SPRING 12	3,289.3	1,485.0	1,164.4	3,963.1	1,900.0	2,246.5	2,543.4	16,591.6	-1.9%
SPRING 13	3,131.5	1,442.3	1,145.7	3,876.4	1,808.9	2,185.7	2,390.8	15,981.3	-3.7%
SPRING 14	3,084.4	1,283.1	1,194.8	3,515.4	1,620.8	2,211.0	2,203.2	15,112.7	-5.4%
SPRING 15	2,810.9	1,149.0	1,100.9	3,216.4	1,533.2	2,104.3	2,121.6	14,036.2	-7.1%
SPRING 16	2,825.7	1,206.0	1,003.2	3,145.1	1,482.7	2,158.7	2,179.8	14,001.3	-0.2%
SPRING 17	2,827.3	1,083.8	1,021.8	3,049.5	1,487.0	2,211.0	2,212.7	13,893.1	-0.8%
SPRING 18	2,667.2	1,113.9	986.2	2,958.0	1,440.9	2,240.5	2,131.7	13,538.4	-2.6%
SPRING 19	2,737.1	1,028.7	1,066.7	2,958.5	1,243.3	2,192.7	1,966.5	13,193.5	-2.5%
SPRING 20	2,616.3	1,022.2	996.8	2,924.8	1,186.8	2,260.2	1,854.8	12,861.9	-2.5%
10-Yr Change	-22.5%	-34.9%	-8.6%	-28.6%	-38.4%	-0.4%	-21.1%	-22.9%	
5-Yr Change	-6.9%	-11.0%	-9.5%	-9.1%	-22.6%	7.4%	-12.6%	-8.4%	
1-Yr Change	-4.4%	-0.6%	-6.6%	-1.1%	-4.5%	3.1%	-5.7%	-2.5%	

Source: Wyoming Community College Commission





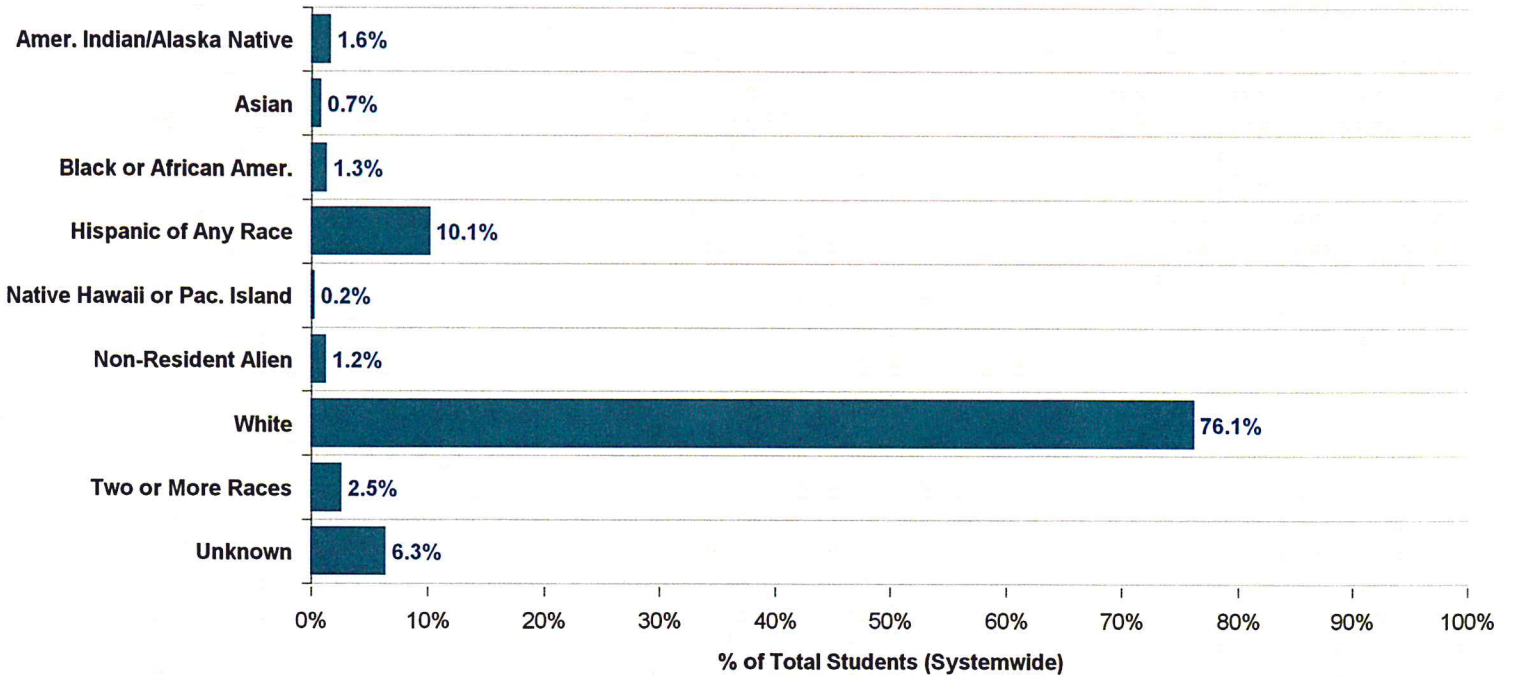


# SPRING '20 ENROLLMENT REPORT

Table 11: Headcount by Race/Ethnicity

Race/Ethnicity	Casper	Central	Eastern	LCCC	Northwest	NWCCD	Western	Total	%
Amer. Indian/Alaska Native	36	153	13	25	6	56	16	305	1.6%
Asian	37	14	3	41	10	18	17	140	0.7%
Black or African Amer.	53	11	17	73	8	29	49	240	1.3%
Hispanic of Any Race	277	172	126	566	110	264	418	1,933	10.1%
Native Hawaii or Pac. Island	9	1	4	5	6	8	9	42	0.2%
Non-Resident Alien	32	14	26	27	57	36	38	230	1.2%
White	2,751	962	1,323	2,693	1,291	3,231	2,316	14,567	76.1%
Two or More Races	52	61	19	152	26	109	64	483	2.5%
Unknown	158	211	5	753	9	13	58	1,207	6.3%
<b>Total</b>	<b>3,405</b>	<b>1,599</b>	<b>1,536</b>	<b>4,335</b>	<b>1,523</b>	<b>3,764</b>	<b>2,985</b>	<b>19,147</b>	<b>100.0%</b>

Source: Wyoming Community College Commission





# SPRING '20 ENROLLMENT REPORT

Table 12: Students Auditing Courses

## Credit Headcount

College	Exclusively Auditing	*Credit Students Auditing
Casper	128	24
Central	100	23
Eastern	85	22
LCCC	109	30
Northwest	15	8
NWCCD	38	3
Western	18	1
<b>Total</b>	<b>493</b>	<b>111</b>

## FTE

College	Exclusively Auditing	*Credit Students Auditing
Casper	26.1	29.2
Central	16.9	15.0
Eastern	7.6	29.8
LCCC	25.3	39.6
Northwest	2.9	9.0
NWCCD	5.6	1.1
Western	3.4	1.3
<b>Total</b>	<b>87.8</b>	<b>125.0</b>

\* Represents students taking audit hours within regular course schedule  
 Source: Wyoming Community College Commission





# SPRING '20 ENROLLMENT REPORT

Table 13: Alternative Delivery Courses

Enrollment and Credit Hours	Casper	Central	Eastern	LCCC	Northwest	NWCCD	Western	System Total
<b>Concurrent Enrollment Headcount</b>	275	241	695	1,159	268	669	577	<b>3,884</b>
% of total students enrolled in Concurrent Enrollment credits	8.1%	15.1%	45.2%	26.7%	17.6%	17.8%	19.3%	<b>20.3%</b>
Concurrent Enrollment student credit hours	1,159.0	975.0	3,097.0	4,664.0	1,007.0	2,499.0	2,414.0	<b>15,815.0</b>
% of total student credit hours	3.7%	7.9%	25.9%	13.3%	7.1%	9.2%	10.8%	<b>10.2%</b>
<b>Dual Enrollment Headcount</b>	294	174	195	316	277	281	667	<b>2,204</b>
% of total students enrolled in 1+ credits as Dual Enrollment	8.6%	10.9%	12.7%	7.3%	18.2%	7.5%	22.3%	<b>11.5%</b>
Dual Enrollment student credit hours	1,729.3	749.0	882.0	1,104.0	1,262.0	1,503.5	2,601.0	<b>9,830.8</b>
% of total student credit hours	5.5%	6.1%	7.4%	3.1%	8.9%	5.5%	11.7%	<b>6.4%</b>
<b>Developmental Headcount **</b>	400	44	73	316	92	187	200	<b>1,312</b>
% of total students enrolled in 1+ developmental credits	11.7%	2.8%	4.8%	7.3%	6.0%	5.0%	6.7%	<b>6.9%</b>
Developmental student credit hours	1,746.0	176.0	231.0	1,212.0	146.0	750.0	836.0	<b>5,097.0</b>
% of total student credit hours	5.6%	1.4%	1.9%	3.5%	1.0%	2.8%	3.8%	<b>3.3%</b>

\* Categories are not mutually exclusive. The same student could be enrolled in more than one of the above categories.

\*\* Includes sections with Course Levels of DEV, DV, DVST, and REM.

\*\*\* English includes ENG courses and sections with course titles containing the terms Writing, Spelling, Grammar, and Reading. Math includes course titles w/ Math, Algebra, and Arithmetic.



# SPRING '20 ENROLLMENT REPORT

Table 14: Distance Education

Enrollment and Credit Hours	Casper	Central	Eastern	LCCC	Northwest	NWCCCD	Western	System Total
<b>Distance Education Headcount *</b>	1,855	825	469	1,680	713	1,291	1,604	<b>8,437</b>
% of total students enrolled in 1+ distance education credits	54.5%	51.6%	30.5%	38.8%	46.8%	34.3%	53.7%	<b>44.1%</b>
Distance Education student credit hours	10,796	3,840	2,369	9,258	3,473	6,804	8,095	<b>44,635</b>
% of total student credit hours	34.4%	31.3%	19.8%	26.4%	24.4%	25.1%	36.4%	<b>28.9%</b>

\* Sections with Schedule Types of Internet (NET), Interactive Video (IV), HYBD (Hybrid Distance), HN (High School Concurrent Online), and Telecourse (TV).