

Wyoming Community College Commission

Commissioners

Mr. Gregg Blikre, Gillette
Mr. Dennis Boal, Evanston
Ms. Katherine Dooley, Powell
Dr. Craig Frederick, Guernsey
Dr. Jackie Freeze, Rock Springs
Ms. Julia Newman, Torrington
Ms. Ember Oakley, Riverton

Ex-officios

Governor Mark Gordon
State Superintendent Jillian Balow
Executive Director
Dr. Sandra Caldwell
Phone: 307-777-7763
Fax: 307-777-6567
www.communitycolleges.wy.edu

2300 Capitol Avenue, 5th Floor - Suite B, Cheyenne, Wyoming 82002



WYOMING
COMMUNITY COLLEGES

Wyoming Community College System
Summer 2019
Term Enrollment Report

Casper College ~ Central Wyoming College ~ Eastern Wyoming College
Laramie County Community College ~ Northwest College
Northern Wyoming Community College District
Western Wyoming Community College

WYOMING COMMUNITY COLLEGE SYSTEM
SPRING 2019 ENROLLMENT REPORT

This report provides a look at the Summer 2019 term enrollment in categories such as student load, location and demographics of the community college student population. The content and format of this report have been developed through a collaborative effort between the Wyoming Community College Commission (WCCC), the Executive Council and the Data Governance/Institutional Research Council members representing the seven community colleges.

Effective with the summer 2016 reporting term, data were extracted from the Central Station Instance (CSI) using one report rather than consolidating individual customized reports from all seven colleges. All enrollment reports have the foundation of:

- Student enrollment being counted the day after 12% of each course has been completed.
- "Full-time equivalency means the number of approved academic or vocational-technical credit hours for each class for which students are enrolled divided by twelve (12)". W.S. 21-18-102 (a)(xii).
- Student headcount includes students who are enrolled for a letter grade, pass/fail designation as well as those who are auditing a course.
- "Duplicated headcount" means that within a survey or polling exercise of numerous programs and/or courses, a student may be counted more than once". WCCC Rules-2015
- "Unduplicated headcount" means that within a survey or polling exercise of numerous programs and/or courses, a student shall be counted only once". WCCC Rules- 2015
- "Concurrent enrollment course" means a college course taught by high school faculty who have been approved as community college adjunct faculty and who are teaching said course as part of their duties as a school district employee. As such, these college courses simultaneously satisfy high school graduation requirements. These courses have been approved by the community college as having equivalent course content, learning objectives and work assignments as an existing college course. Course content and learning objectives are equivalent to the related community college course as determined and defined by community college faculty. WCCC Rules- 2017
- "Dual enrollment credit" means credit given to qualified high school students who complete college level courses for which the community college hires and pays the instructor and in which the school district agrees to allow high school graduation credit. WCCC Rules- 2017

*Full-time equivalencies (FTE) reported in tables 1, 5, 7b, 8 and 10 may vary slightly due to rounding in the enrollment calculations.

**The data presented in this report may vary from enrollment reports posted on Wyoming college websites due to extraction date and sub-set parameter differences.

For additional information and discussion regarding this report, please refer to the Wyoming Community College Commission's meeting minutes for February 13, 2020, located on the Commission's website at <http://communitycolleges.wy.edu>.



SUMMER '19 ENROLLMENT REPORT

Table 1: Credit Headcount & FTE

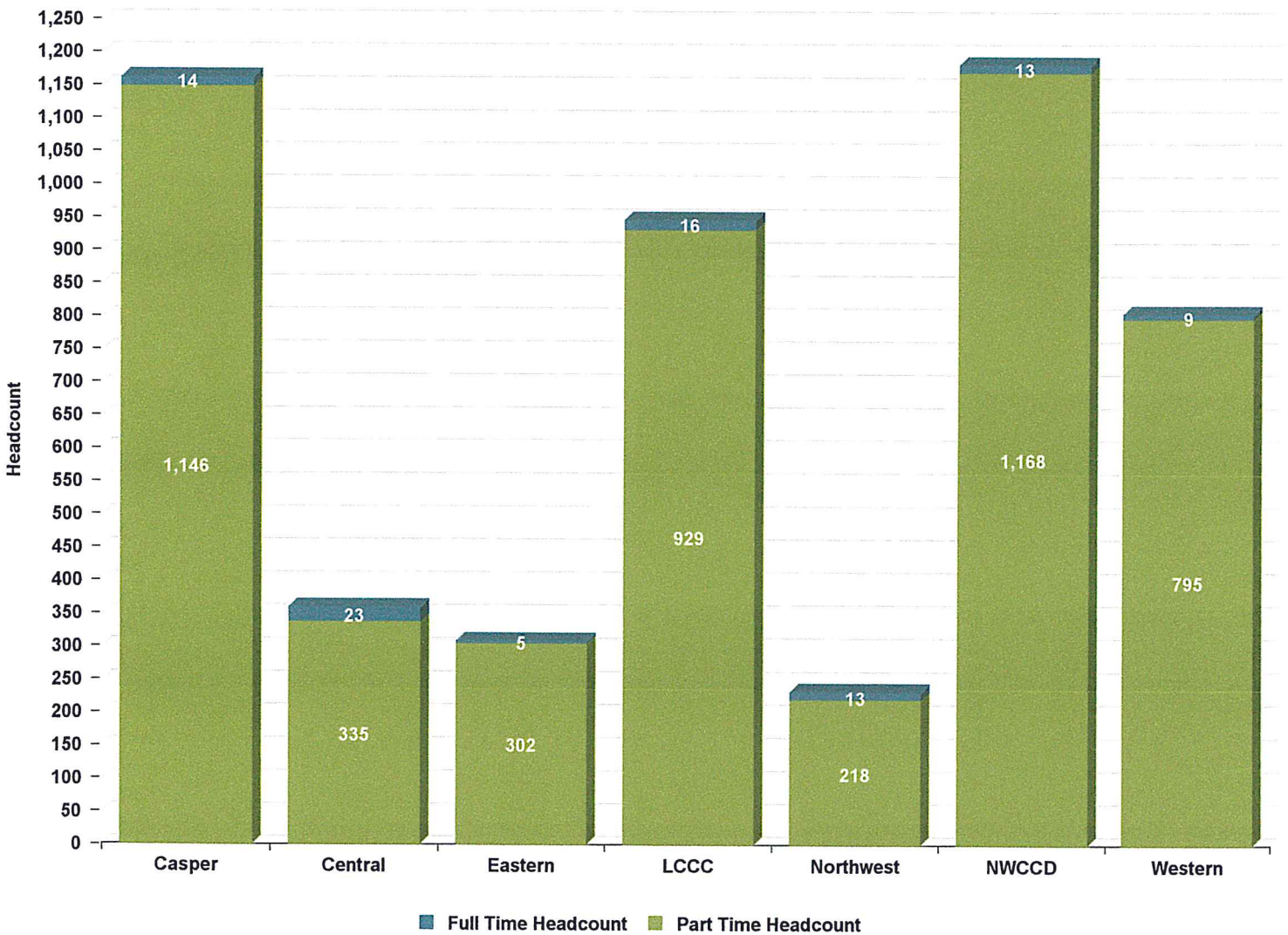
College	CREDIT HEADCOUNT			
	Full Time	Part Time	Total	%
Casper	14	1,146	1,160	23.3%
Central	23	335	358	7.2%
Eastern	5	302	307	6.2%
LCCC	16	929	945	19.0%
Northwest	13	218	231	4.6%
NWCCD	13	1,168	1,181	23.7%
Western	9	795	804	16.1%
Total	93	4,893	4,986	100.0%

Percent 1.9% 98.1% 100.0%

College	CREDIT FTE			
	Full Time	Part Time	Total	%
Casper	15.5	416.0	431.5	25.9%
Central	26.3	118.9	145.2	8.7%
Eastern	5.6	75.9	81.5	4.9%
LCCC	16.3	354.3	370.5	22.3%
Northwest	13.0	75.2	88.2	5.3%
NWCCD	14.5	296.4	310.9	18.7%
Western	10.3	226.0	236.3	14.2%
Total	101.5	1,562.7	1,664.1	100.0%

Percent 6.1% 93.9% 100.0%

Source: Wyoming Community College Commission





SUMMER '19 ENROLLMENT REPORT

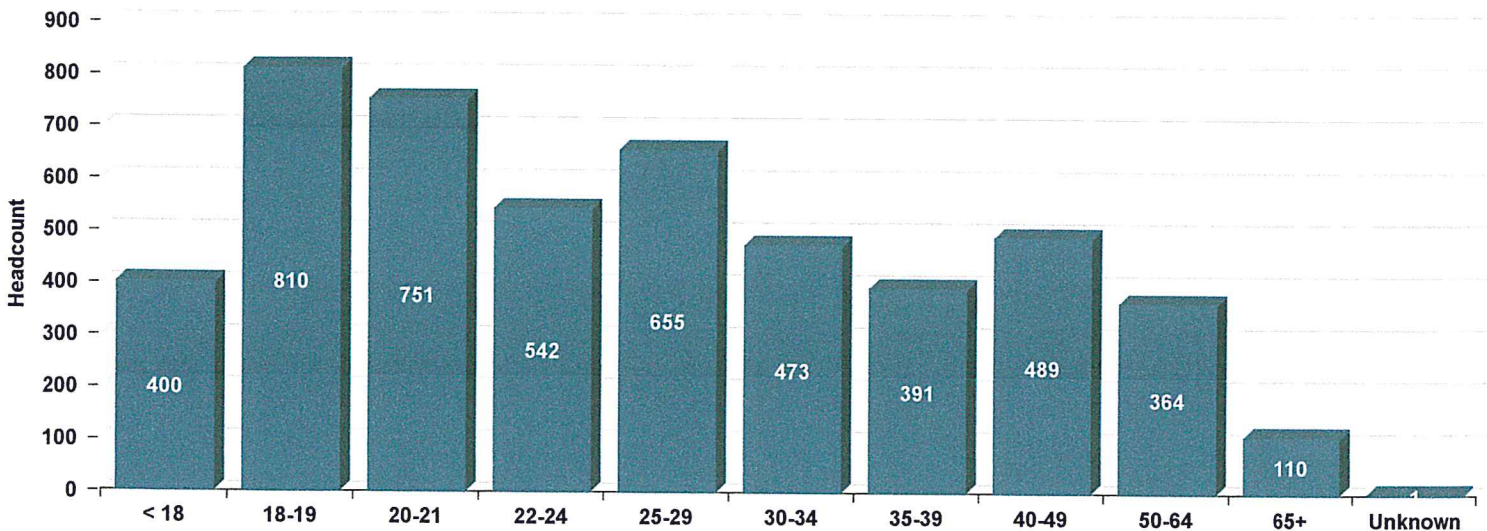
Table 2: Credit Headcount by Age

College	< 18	18-19	20-21	22-24	25-29	30-34	35-39	40-49	50-64	65+	Unknown	TOTAL
Casper	142	172	184	158	173	110	77	86	38	20	0	1,160
Central	7	63	52	36	53	38	31	42	31	5	0	358
Eastern	28	41	30	16	31	27	26	47	32	29	0	307
LCCC	93	145	153	127	154	106	57	46	39	25	0	945
Northwest	14	46	45	27	30	14	18	21	14	2	0	231
NWCCD	59	182	162	105	128	118	106	159	146	15	1	1,181
Western	57	161	125	73	86	60	76	88	64	14	0	804
Total	400	810	751	542	655	473	391	489	364	110	1	4,986
Percent	8.0%	16.2%	15.1%	10.9%	13.1%	9.5%	7.8%	9.8%	7.3%	2.2%	0.0%	100.0%

Average Age	Casper	Central	Eastern	LCCC	Northwest	NWCCD	Western	Systemwide
Female	26.7	30.3	30.6	26.9	28.4	27.1	26.5	27.4
Male	27.4	29.8	41.8	28.7	25.8	35.5	32.5	32.2
Full Time	28.1	21.5	26.2	31.8	32.3	31.5	22.1	27.5
Part Time	26.9	30.8	35.4	27.4	27.3	31.8	29.5	29.4
Total	26.9	30.2	35.3	27.5	27.6	31.8	29.4	29.4

Median Age	Casper	Central	Eastern	LCCC	Northwest	NWCCD	Western	Systemwide
Female	22	27	24	23	24	22	21	23
Male	23	26	40	23	22	33	27	27
Full Time	26	20	29	32	35	32	20	26
Part Time	23	27	32	23	22	28	24	24
Total	23	26	32	23	23	28	23	24

Students with unreported birth dates are excluded. The male and female statistics exclude students with unreported gender.
 Source: Wyoming Community College Commission



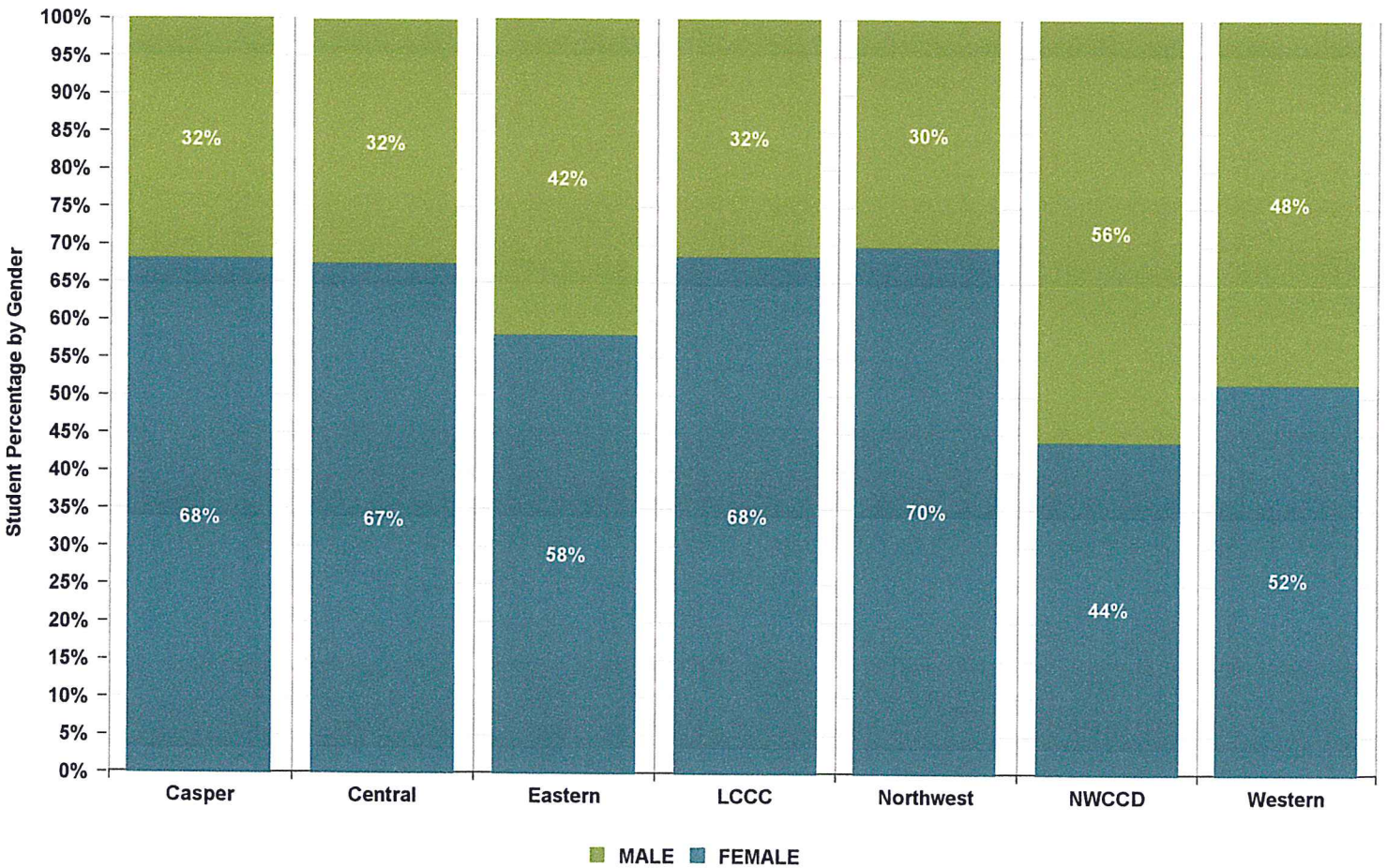


SUMMER '19 ENROLLMENT REPORT

Table 3: Credit Headcount by Gender

College	SUMMER				TOTAL
	Male	% Male	Female	% Female	
Casper	371	32.0%	789	68.0%	1,160
Central	116	32.4%	241	67.3%	358
Eastern	129	42.0%	178	58.0%	307
LCCC	299	31.6%	646	68.4%	945
Northwest	70	30.3%	161	69.7%	231
NWCCD	662	56.1%	519	43.9%	1,181
Western	389	48.4%	415	51.6%	804
Total	2,036	40.8%	2,949	59.1%	4,986

These data do not reflect those not reported as male or female.
 Source: Wyoming Community College Commission





SUMMER '19 ENROLLMENT REPORT

Table 4: Credit Headcount by Residency

County	Casper	Central	Eastern	LCCC	Northwest	NWCCD	Western	Total	% of In-State	County Pop.**	****Credit Students as % of Pop.
Albany	29	4	4	<u>150</u>	0	10	9	206	4.7%	38,680	0.5%
Big Horn	7	5	2	9	<u>35</u>	7	0	65	1.5%	12,040	0.5%
Campbell	28	2	3	15	3	<u>619</u>	2	672	15.3%	48,890	1.4%
Carbon	14	5	3	13	1	1	<u>27</u>	64	1.5%	15,730	0.4%
Converse	44	0	<u>21</u>	5	0	11	1	82	1.9%	14,280	0.6%
Crook	7	1	<u>20</u>	1	1	39	2	71	1.6%	7,560	0.9%
Fremont	35	207	2	12	1	4	5	266	6.1%	40,000	0.7%
Goshen	9	0	108	5	0	0	1	123	2.8%	13,330	0.9%
Hot Springs	3	<u>7</u>	1	0	1	2	0	14	0.3%	4,640	0.3%
Johnson	10	1	2	5	0	<u>38</u>	1	57	1.3%	8,450	0.7%
Laramie	48	1	6	541	1	15	3	615	14.0%	99,650	0.6%
Lincoln	4	5	1	13	2	1	<u>53</u>	79	1.8%	19,540	0.4%
Natrona	708	4	8	11	0	18	1	750	17.1%	81,800	0.9%
Niobrara	3	0	<u>29</u>	1	1	0	1	35	0.8%	2,460	1.4%
Park	14	3	2	4	124	11	4	162	3.7%	29,590	0.5%
Platte	15	1	<u>14</u>	7	1	1	0	39	0.9%	8,730	0.4%
Sheridan	15	0	3	5	0	184	1	208	4.7%	30,590	0.7%
Sublette	10	3	1	3	0	2	<u>34</u>	53	1.2%	9,630	0.6%
Sweetwater	12	4	0	10	1	2	505	534	12.2%	43,830	1.2%
Teton	13	<u>22</u>	1	2	0	0	3	41	0.9%	23,740	0.2%
Uinta	5	3	0	11	0	3	<u>77</u>	99	2.3%	20,640	0.5%
Unknown	0	16	0	1	0	0	0	17	0.4%	n/a	n/a
Washakie	9	3	1	4	<u>11</u>	13	1	42	1.0%	8,160	0.5%
Weston	12	2	<u>55</u>	3	0	21	0	93	2.1%	7,290	1.3%
In Tax District	708	207	108	541	124	184	505	2,377			
In Service Area ***	0	29	139	150	46	657	191	1,212			
Out of Service Area	346	63	40	140	13	161	35	798			
Total In-State	1,054	299	287	831	183	1,002	731	4,387			
Border States *	60	24	14	85	26	102	44	355			
All Other States	42	33	6	22	19	63	17	202			
International	4	2	0	7	3	14	12	42			
Total	1,160	358	307	945	231	1,181	804	4,986			
% In Tax District	61.0%	57.8%	35.2%	57.2%	53.7%	15.6%	62.8%	47.7%			
% In Service Area	0.0%	8.1%	45.3%	15.9%	19.9%	55.6%	23.8%	24.3%			
% Out of Service Area	29.8%	17.6%	13.0%	14.8%	5.6%	13.6%	4.4%	16.0%			
% In-State	90.9%	83.5%	93.5%	87.9%	79.2%	84.8%	90.9%	88.0%			
% Border States *	5.2%	6.7%	4.6%	9.0%	11.3%	8.6%	5.5%	7.1%			
% All Other States	3.6%	9.2%	2.0%	2.3%	8.2%	5.3%	2.1%	4.1%			
% International	0.3%	0.6%	0.0%	0.7%	1.3%	1.2%	1.5%	0.8%			

* Border states include Colorado, Utah, Idaho, Montana, South Dakota, and Nebraska.

** Wyoming Department of Administration and Information, Economic Analysis Division Estimate <http://eadiv.state.wy.us/pop/wyc&sc40.htm>

*** Casper is the only college with one service area.

**** Total In-State Credit Students as % of Population: 0.7%

BOLD:
College Location
BLUE:
College Service Area

Source: Wyoming Community College Commission



SUMMER '19 ENROLLMENT REPORT

Table 5: Credit FTE by Residency

WY County	Casper	Central	Eastern	LCCC	Northwest	NWCCD	Western	Total
Albany	10.4	1.2	1.8	<u>59.8</u>	0.0	3.1	2.4	78.7
Big Horn	2.4	2.4	0.8	3.3	<u>12.9</u>	2.1	0.0	23.8
Campbell	11.2	0.8	1.0	6.8	1.4	<u>153.4</u>	1.0	175.7
Carbon	5.3	0.7	1.4	6.5	0.3	0.3	<u>9.1</u>	23.5
Converse	17.3	0.0	<u>7.0</u>	1.8	0.0	1.4	0.3	27.7
Crook	2.4	0.3	<u>7.3</u>	0.3	0.3	7.3	0.6	18.5
Fremont	13.3	83.1	0.4	5.3	0.3	0.8	1.5	104.6
Goshen	3.3	0.0	19.7	2.3	0.0	0.0	0.8	26.1
Hot Springs	0.8	<u>3.3</u>	0.1	0.0	0.3	0.4	0.0	4.8
Johnson	3.1	0.1	1.3	1.8	0.0	<u>11.8</u>	0.1	18.1
Laramie	20.7	0.5	1.2	208.6	0.5	4.1	0.4	235.9
Lincoln	1.5	2.7	0.3	3.8	0.8	0.3	<u>13.8</u>	23.3
Natrona	254.4	1.6	2.6	4.6	0.0	4.6	0.3	268.1
Niobrara	1.0	0.0	<u>7.7</u>	0.3	0.3	0.0	0.3	9.5
Park	4.7	1.7	0.6	1.3	48.1	3.1	1.5	61.0
Platte	4.3	0.3	<u>3.3</u>	3.0	0.3	0.0	0.0	11.2
Sheridan	8.2	0.0	0.9	1.8	0.0	59.9	0.3	71.1
Sublette	3.7	1.3	0.3	0.8	0.0	1.3	<u>8.3</u>	15.7
Sweetwater	4.9	3.0	0.0	4.4	0.3	0.6	136.4	149.6
Teton	5.7	<u>7.1</u>	0.3	1.0	0.0	0.0	1.2	15.3
Uinta	1.3	1.0	0.0	2.9	0.0	0.8	<u>27.4</u>	33.4
Unknown	0.0	7.0	0.0	0.3	0.0	0.0	0.0	7.4
Washakie	3.0	1.3	0.3	1.3	<u>3.0</u>	5.0	0.3	14.3
Weston	5.3	0.5	<u>15.1</u>	1.1	0.0	3.2	0.0	25.1
In Tax District	254.4	83.1	19.7	208.6	48.1	59.9	136.4	810.2
In Service Area **	0.0	10.3	40.4	59.8	15.9	165.2	58.6	350.4
Out of Service Area	133.6	26.2	13.3	54.5	4.7	38.4	11.0	281.7
Total In-State	388.0	119.6	73.4	322.9	68.7	263.6	206.0	1,442.2
Border States *	23.39	11.88	6.25	34.67	11.83	26.63	17.58	132.22
All Other States	18.3	13.2	1.8	9.8	7.0	16.2	6.7	72.9
International	1.9	0.5	0.0	3.2	0.8	4.5	6.0	16.8
Total	431.5	145.2	81.5	370.5	88.3	310.9	236.3	1,664.1
% In Tax District	59.0%	57.2%	24.2%	56.3%	54.5%	19.3%	57.7%	48.7%
% In Service Area	0.0%	7.1%	49.6%	16.1%	18.0%	53.1%	24.8%	21.1%
% Out of Service Area	31.0%	18.1%	16.3%	14.7%	5.3%	12.4%	4.7%	16.9%
% In-State	89.9%	82.4%	90.1%	87.2%	77.8%	84.8%	87.2%	86.7%
% Border States *	5.4%	8.2%	7.7%	9.4%	13.4%	8.6%	7.4%	7.9%
% All Other States	4.2%	9.1%	2.2%	2.6%	7.9%	5.2%	2.8%	4.4%
% International	0.4%	0.3%	0.0%	0.9%	0.8%	1.4%	2.5%	1.0%

* Border states include Colorado, Utah, Idaho, Montana, South Dakota, and Nebraska.

** Casper is the only college with one service area.

Source: Wyoming Community College Commission



SUMMER '19 ENROLLMENT REPORT

Table 6A: Headcount by Credit Hours

Credit Hours	Casper	Central	Eastern	LCCC	Northwest	NWCCD	Western	Total	Percent
<1	2	7	0	0	1	348	140	498	10.0%
1	69	43	99	29	6	212	157	615	12.3%
2	51	2	23	17	18	5	26	142	2.8%
3	330	107	62	392	82	205	133	1,311	26.3%
Sub Total	452	159	184	438	107	770	456	2,566	51.5%
4	326	63	80	136	48	126	127	906	18.2%
5	71	2	7	20	5	5	15	125	2.5%
6	106	46	10	150	33	112	81	538	10.8%
Sub Total	503	111	97	306	86	243	223	1,569	31.5%
7	90	35	13	89	15	90	62	394	7.9%
8	56	10	2	37	3	18	23	149	3.0%
9	11	12	2	44	2	12	10	93	1.9%
Sub Total	157	57	17	170	20	120	95	636	12.8%
10	23	6	4	12	3	24	16	88	1.8%
11	11	2	0	3	2	11	5	34	0.7%
12	5	10	3	14	13	4	2	51	1.0%
Sub Total	39	18	7	29	18	39	23	173	3.5%
13	4	6	0	1	0	4	4	19	0.4%
14	3	1	0	1	0	3	1	9	0.2%
15	0	2	1	0	0	0	0	3	0.1%
Sub Total	7	9	1	2		7	5	31	0.6%
16	2	2	1	0	0	2	0	7	0.1%
17	0	0	0	0	0	0	2	2	0.0%
Sub Total	2	2	1			2	2	9	0.2%
20	0	1	0	0	0	0	0	1	0.0%
21	0	1	0	0	0	0	0	1	0.0%
Sub Total		2						2	0.0%
Total	1,160	358	307	945	231	1,181	804	4,986	100.0%

Credit Hour bands are not displayed if there were no students associated with that particular number of credit hours.
 Source: Wyoming Community College Commission



SUMMER '19 ENROLLMENT REPORT

Table 6B: Headcount by Credit Hours

Credit Hours	Casper	Central	Eastern	LCCC	Northwest	NWCCD	Western	Total	Percent
<1	2	7	0	0	1	348	140	498	10.0%
1	69	43	99	29	6	212	157	615	12.3%
2	51	2	23	17	18	5	26	142	2.8%
3	330	107	62	392	82	205	133	1,311	26.3%
4	326	63	80	136	48	126	127	906	18.2%
5	71	2	7	20	5	5	15	125	2.5%
Sub Total	849	224	271	594	160	901	598	3,597	72.1%
6	106	46	10	150	33	112	81	538	10.8%
7	90	35	13	89	15	90	62	394	7.9%
8	56	10	2	37	3	18	23	149	3.0%
9	11	12	2	44	2	12	10	93	1.9%
10	23	6	4	12	3	24	16	88	1.8%
11	11	2	0	3	2	11	5	34	0.7%
Sub Total	297	111	31	335	58	267	197	1,296	26.0%
12	5	10	3	14	13	4	2	51	1.0%
13	4	6	0	1	0	4	4	19	0.4%
14	3	1	0	1	0	3	1	9	0.2%
15	0	2	1	0	0	0	0	3	0.1%
Sub Total	12	19	4	16	13	11	7	82	1.6%
16	2	2	1	0	0	2	0	7	0.1%
17	0	0	0	0	0	0	2	2	0.0%
Sub Total	2	2	1			2	2	9	0.2%
20	0	1	0	0	0	0	0	1	0.0%
21	0	1	0	0	0	0	0	1	0.0%
Sub Total		2						2	0.0%
Total	1,160	358	307	945	231	1,181	804	4,986	100.0%

Credit Hour bands are not displayed if there were no students associated with that particular number of credit hours.
 Source: Wyoming Community College Commission



SUMMER '19 ENROLLMENT REPORT

Table 7a: Credit Headcount by Program of Study

College	Full Time			Part Time			Total		
	Transfer Preparation*	Career & Technical Education (CTE)**	Not Seeking Degree or Certificate	Transfer Preparation*	Career & Technical Education (CTE)**	Not Seeking Degree or Certificate	Transfer Preparation*	Career & Technical Education (CTE)**	Not Seeking Degree or Certificate
Casper	9	2	3	447	171	528	456	173	531
Central	15	8	0	113	99	123	128	107	123
Eastern	2	2	1	63	32	207	65	34	208
LCCC	2	14	0	567	113	249	569	127	249
Northwest	2	11	0	107	19	92	109	30	92
NWCCD	12	1	0	429	542	197	441	543	197
Western	4	4	1	243	141	411	247	145	412
Total	46	42	5	1,969	1,117	1,807	2,015	1,159	1,812
Percent	49.5%	45.2%	5.4%	40.2%	22.8%	36.9%	40.4%	23.2%	36.3%

*Transfer Preparation programs provide students with the first two years of an education sequence designed to transition to a Bachelor's Degree program. Programs generally lead to an AA, AB, AFA or AS degree.

**Career Technical programs are designed to prepare students for entry into a specific occupational area or advancement in the workplace immediately upon completion/graduation. Programs generally lead to Certificates or an ADN or AAS degree.

Source: Wyoming Community College Commission



SUMMER '19 ENROLLMENT REPORT

Table 7b: FTE by Program of Study

College	Full Time			Part Time			Total		
	Transfer Preparation*	Career & Technical Education (CTE)**	Not Seeking Degree or Certificate	Transfer Preparation*	Career & Technical Education (CTE)**	Not Seeking Degree or Certificate	Transfer Preparation*	Career & Technical Education (CTE)**	Not Seeking Degree or Certificate
Casper	10.0	2.2	3.3	179.6	71.6	164.9	189.6	73.7	168.2
Central	18.0	8.3	0.0	47.4	43.3	28.2	65.4	51.6	28.2
Eastern	2.6	2.0	1.0	22.0	11.3	42.7	24.6	13.3	43.7
LCCC	2.3	14.0	0.0	239.3	47.7	67.3	241.5	61.7	67.3
Northwest	2.0	11.0	0.0	40.1	8.3	26.8	42.1	19.3	26.8
NWCCD	13.2	1.3	0.0	181.6	60.5	54.4	194.7	61.8	54.4
Western	4.6	4.7	1.1	97.0	48.3	80.7	101.5	52.9	81.8
Total	52.6	43.4	5.4	806.8	291.0	464.9	859.5	334.4	470.3
Percent	51.9%	42.8%	5.3%	51.6%	18.6%	29.7%	51.6%	20.1%	28.3%

*Transfer Preparation programs provide students with the first two years of an education sequence designed to transition to a Bachelor's Degree program. Programs generally lead to an AA, AB, AFA or AS degree.

**Career Technical programs are designed to prepare students for entry into a specific occupational area or advancement in the workplace immediately upon completion/graduation. Programs generally lead to Certificates or an ADN or AAS degree.

Source: Wyoming Community College Commission

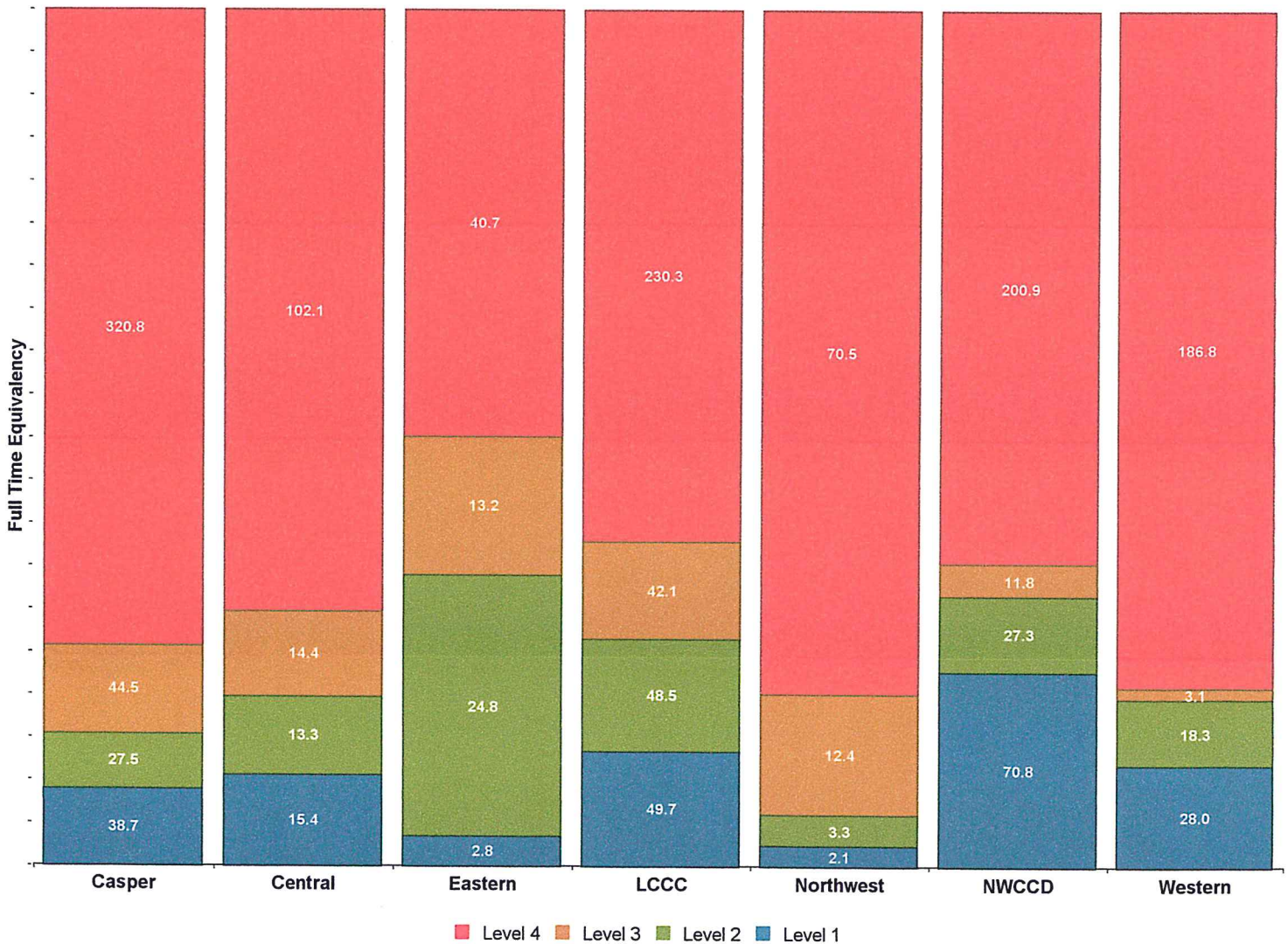


SUMMER '19 ENROLLMENT REPORT

Table 8: FTE Level of Instruction

College	Level 1 FTE	Level 2 FTE	Level 3 FTE	Level 4 FTE	Unknown Level	TOTAL
Casper	38.7	27.5	44.5	320.8	0.0	431.5
Central	15.4	13.3	14.4	102.1	0.0	145.2
Eastern	2.8	24.8	13.2	40.7	0.0	81.5
LCCC	49.7	48.5	42.1	230.3	0.0	370.5
Northwest	2.1	3.3	12.4	70.5	0.0	88.3
NWCCD	70.8	27.3	11.8	200.9	0.0	310.9
Western	28.0	18.3	3.1	186.8	0.0	236.3
Total	207.5	163.0	141.5	1,152.1	0.0	1,664.1

Level 1 = Lecture, Level 2 = Laboratory, Level 3 = High Technology, Level 4 = Distance
 Source: Wyoming Community College Commission



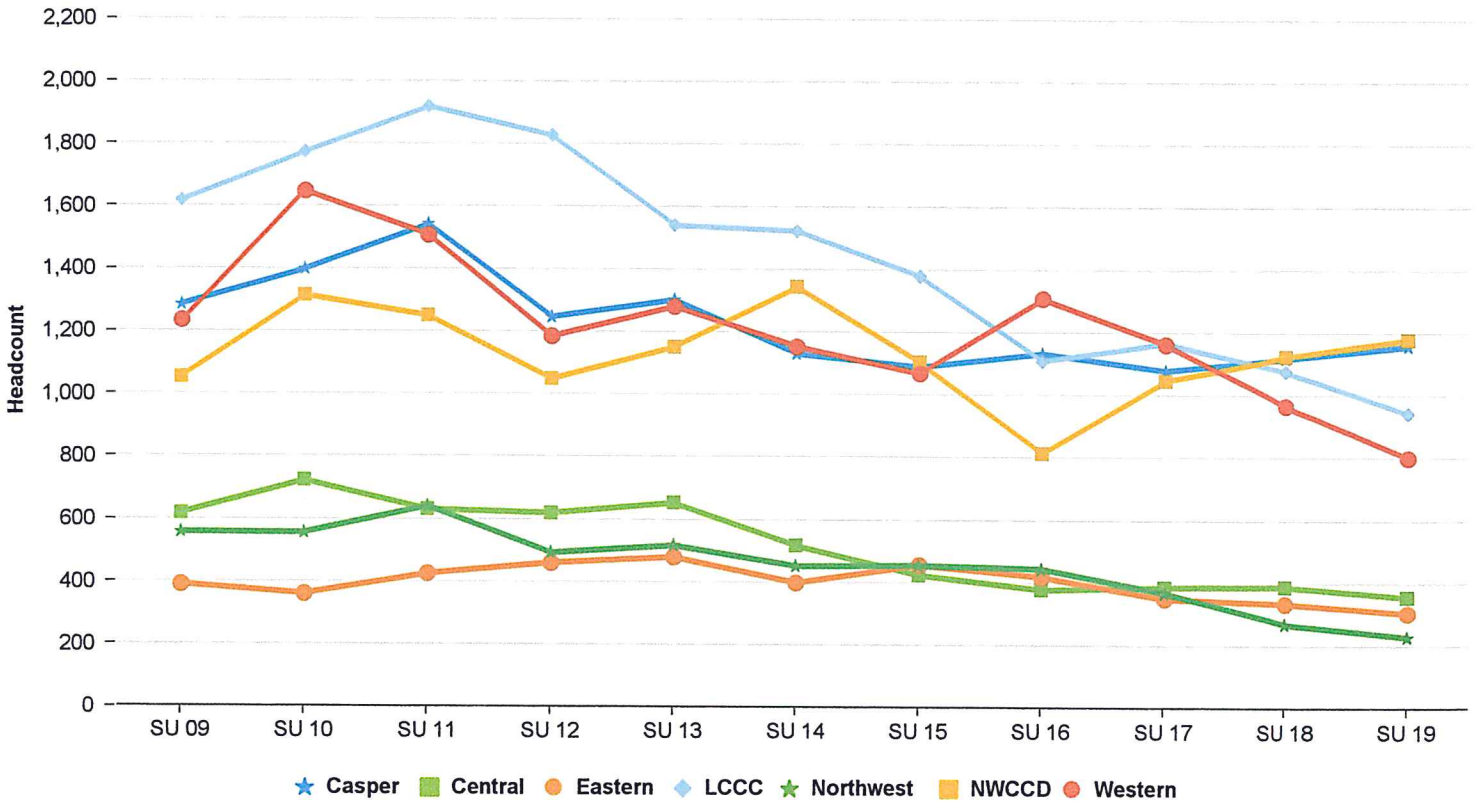


SUMMER '19 ENROLLMENT REPORT

Table 9: History of Headcount

Semester	Casper	Central	Eastern	LCCC	Northwest	NWCCD	Western	TOTAL	Percent Change
SUMMER 09	1,286	620	393	1,619	560	1,054	1,235	6,767	N/A
SUMMER 10	1,399	725	363	1,774	558	1,316	1,649	7,784	15.0%
SUMMER 11	1,544	633	428	1,920	644	1,251	1,510	7,930	1.9%
SUMMER 12	1,248	622	463	1,828	495	1,050	1,186	6,892	-13.1%
SUMMER 13	1,303	655	482	1,541	519	1,153	1,282	6,935	0.6%
SUMMER 14	1,132	519	401	1,524	454	1,345	1,155	6,530	-5.8%
SUMMER 15	1,091	426	458	1,380	457	1,106	1,070	5,988	-8.3%
SUMMER 16	1,135	380	421	1,111	447	815	1,309	5,618	-6.2%
SUMMER 17	1,081	389	352	1,168	371	1,048	1,165	5,574	-0.8%
SUMMER 18	1,120	391	337	1,078	271	1,126	968	5,291	-5.1%
SUMMER 19	1,160	358	307	945	231	1,181	804	4,986	-5.8%
10-Yr Change	-9.8%	-42.3%	-21.9%	-41.6%	-58.8%	12.0%	-34.9%	-26.3%	
5-Yr Change	2.5%	-31.0%	-23.4%	-38.0%	-49.1%	-12.2%	-30.4%	-23.6%	
1-Yr Change	3.6%	-8.4%	-8.9%	-12.3%	-14.8%	4.9%	-16.9%	-5.8%	

Source: Wyoming Community College Commission



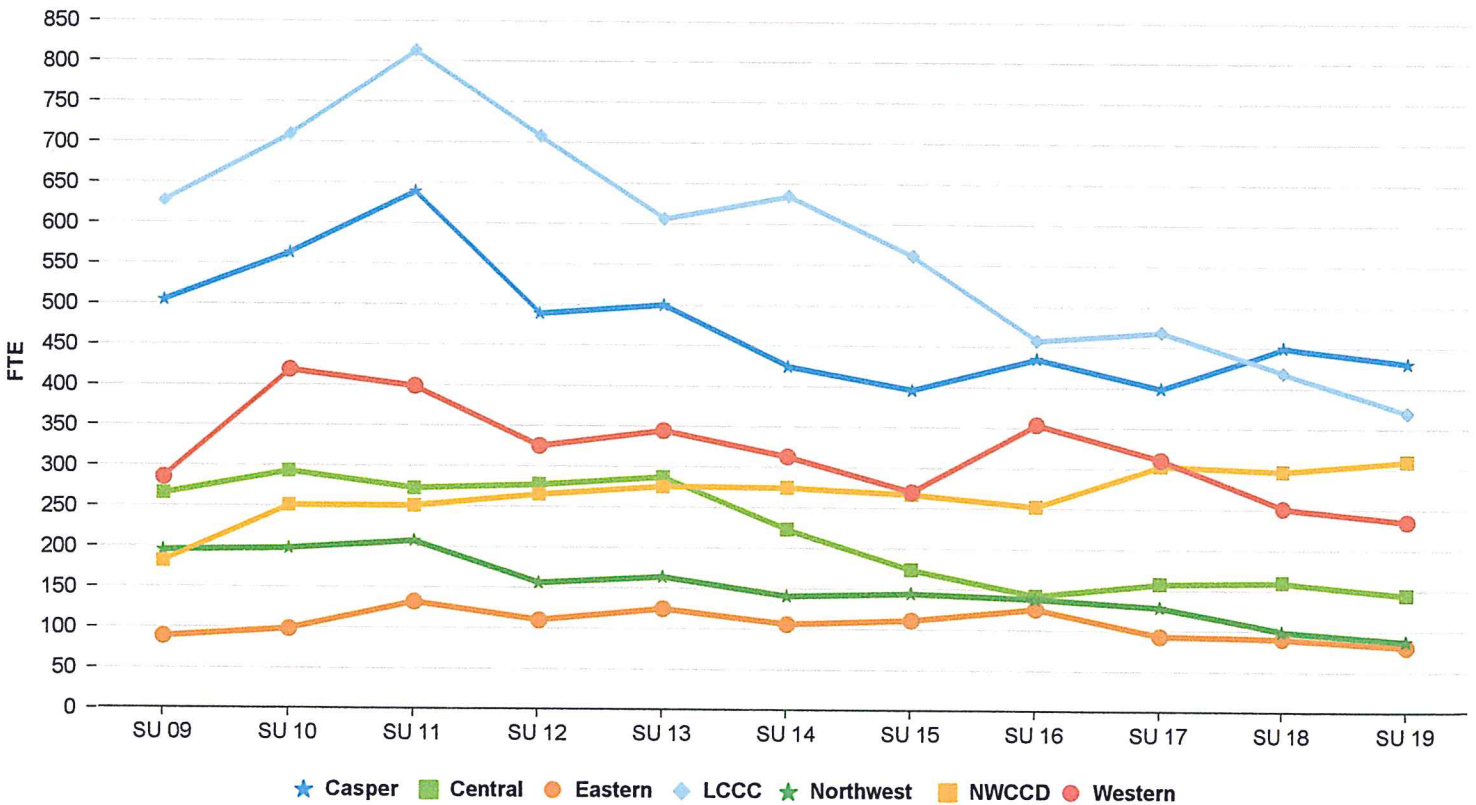


SUMMER '19 ENROLLMENT REPORT

Table 10: History of FTE Enrollment

Semester	Casper	Central	Eastern	LCCC	Northwest	NWCCD	Western	TOTAL	Percent Change
SUMMER 09	505.1	266.3	89.6	628.1	196.1	182.7	286.4	2,154.2	N/A
SUMMER 10	564.0	294.2	99.3	710.4	198.7	251.9	419.4	2,538.0	17.8%
SUMMER 11	640.3	273.7	133.1	813.8	208.4	251.9	399.3	2,720.5	7.2%
SUMMER 12	489.6	278.3	111.1	708.3	157.0	266.3	326.2	2,336.8	-14.1%
SUMMER 13	500.7	288.3	125.4	606.9	164.8	276.7	345.7	2,308.5	-1.2%
SUMMER 14	425.2	223.8	107.0	635.3	141.5	275.5	313.9	2,122.2	-8.1%
SUMMER 15	396.9	174.5	112.2	561.9	145.1	267.9	271.0	1,929.5	-9.1%
SUMMER 16	435.7	143.2	126.9	458.2	139.3	253.3	354.9	1,911.5	-0.9%
SUMMER 17	399.3	158.3	93.9	469.0	129.2	304.2	312.0	1,865.9	-2.4%
SUMMER 18	450.3	160.5	91.2	419.2	100.1	298.1	252.5	1,771.9	-5.0%
SUMMER 19	431.5	145.2	81.5	370.5	88.2	310.9	236.3	1,664.1	-6.1%
10-Yr Change	-14.6%	-45.5%	-9.0%	-41.0%	-55.0%	70.2%	-17.5%	-22.8%	
5-Yr Change	1.5%	-35.1%	-23.8%	-41.7%	-37.7%	12.8%	-24.7%	-21.6%	
1-Yr Change	-4.2%	-9.5%	-10.6%	-11.6%	-11.9%	4.3%	-6.4%	-6.1%	

Source: Wyoming Community College Commission



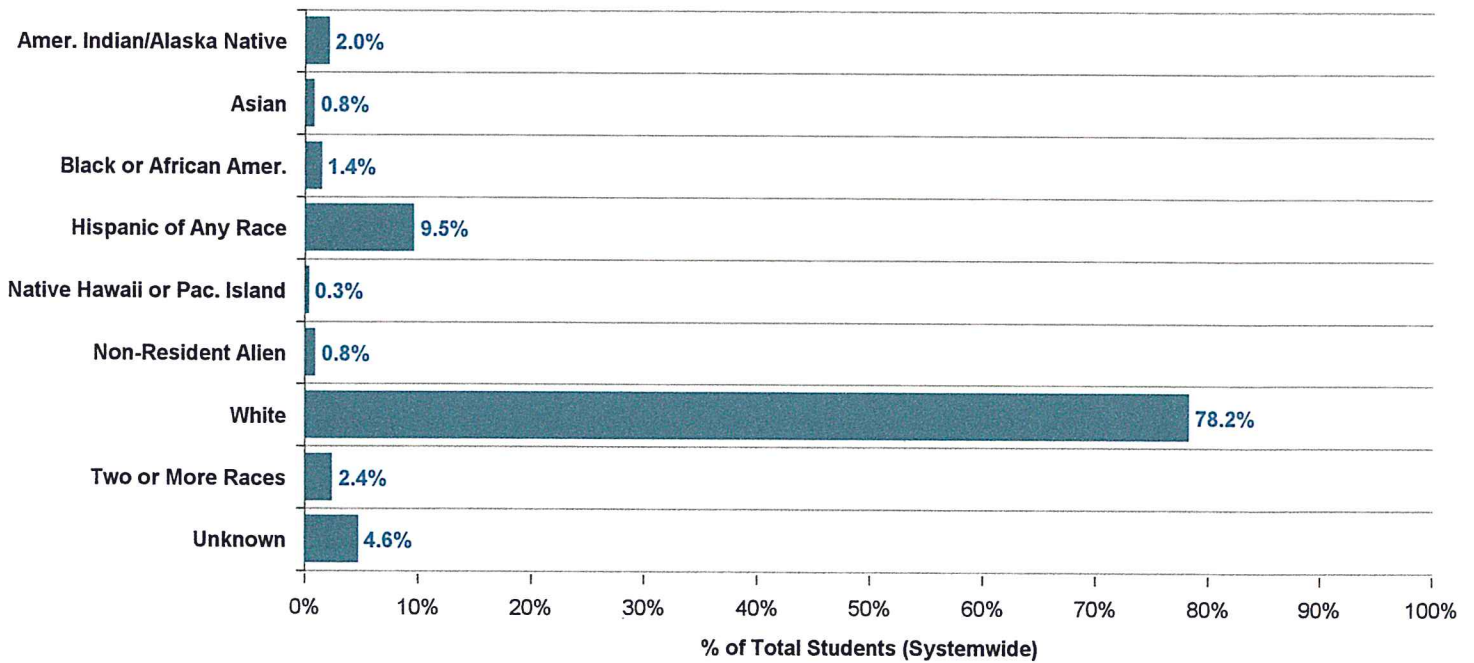


SUMMER '19 ENROLLMENT REPORT

Table 11: Headcount by Race/Ethnicity

Race/Ethnicity	Casper	Central	Eastern	LCCC	Northwest	NWCCD	Western	Total	%
Amer. Indian/Alaska Native	12	39	4	14	0	29	4	102	2.0%
Asian	11	2	2	6	3	10	4	38	0.8%
Black or African Amer.	16	1	3	22	2	12	13	69	1.4%
Hispanic of Any Race	72	40	27	113	16	94	111	473	9.5%
Native Hawaii or Pac. Island	6	0	0	1	1	5	1	14	0.3%
Non-Resident Alien	4	2	0	7	3	14	12	42	0.8%
White	959	202	267	649	200	991	631	3,899	78.2%
Two or More Races	20	12	4	29	6	24	23	118	2.4%
Unknown	60	60	0	104	0	2	5	231	4.6%
Total	1,160	358	307	945	231	1,181	804	4,986	100.0%

Source: Wyoming Community College Commission





SUMMER '19 ENROLLMENT REPORT

Table 12: Students Auditing Courses

Credit Headcount

College	Exclusively Auditing	*Credit Students Auditing
Casper	32	6
Central	3	2
Eastern	55	0
LCCC	40	1
Northwest	0	0
NWCCD	1	1
Western	3	2
Total	134	12

FTE

College	Exclusively Auditing	*Credit Students Auditing
Casper	3.9	3.3
Central	0.6	0.2
Eastern	4.6	0.0
LCCC	7.9	0.5
Northwest	0.0	0.0
NWCCD	0.3	0.6
Western	0.3	0.6
Total	17.5	5.1

* Represents students taking audit hours within regular course schedule
 Source: Wyoming Community College Commission



SUMMER '19 ENROLLMENT REPORT

Table 13: Alternative Delivery Courses

Enrollment and Credit Hours	Casper	Central	Eastern	LCCC	Northwest	NWCCD	Western	System Total
Concurrent Enrollment Headcount	0	0	0	0	0	0	0	0
% of total students enrolled in Concurrent Enrollment credits	0.0%	0.0%	0.0%	0.0%	0.0%	0.0%	0.0%	0.0%
Concurrent Enrollment student credit hours	0.0	0.0	0.0	0.0	0.0	0.0	0.0	0.0
% of total student credit hours	0.0%	0.0%	0.0%	0.0%	0.0%	0.0%	0.0%	0.0%
Dual Enrollment Headcount	178	0	10	1	9	56	52	306
% of total students enrolled in 1+ credits as Dual Enrollment	15.3%	0.0%	3.3%	0.1%	3.9%	4.7%	6.5%	6.1%
Dual Enrollment student credit hours	569.0	0.0	32.0	3.0	30.0	256.0	171.5	1,061.5
% of total student credit hours	11.0%	0.0%	3.3%	0.1%	2.8%	6.9%	6.0%	5.3%
Developmental Headcount **	109	6	7	74	0	32	34	262
% of total students enrolled in 1+ developmental credits	9.4%	1.7%	2.3%	7.8%	0.0%	2.7%	4.2%	5.3%
Developmental student credit hours	440.0	24.0	21.0	291.0	0.0	124.0	151.0	1,051.0
% of total student credit hours	8.5%	1.4%	2.1%	6.5%		3.3%	5.3%	5.3%

* Categories are not mutually exclusive. The same student could be enrolled in more than one of the above categories.

** Includes sections with Course Levels of DEV, DV, DVST, and REM.

*** English includes ENG courses and sections with course titles containing the terms Writing, Spelling, Grammar, and Reading. Math includes course titles w/ Math, Algebra, and Arithmetic.



SUMMER '19 ENROLLMENT REPORT

Table 14: Distance Education

Enrollment and Credit Hours	Casper	Central	Eastern	LCCC	Northwest	NWCCD	Western	System Total
Distance Education Headcount *	868	236	123	636	200	505	398	2,966
% of total students enrolled in 1+ distance education credits	74.8%	65.9%	40.1%	67.3%	86.6%	42.8%	49.5%	59.5%
Distance Education student credit hours	3,850	1,216	488	2,763	846	2,411	1,874	13,448
% of total student credit hours	74.3%	69.8%	49.9%	62.1%	79.9%	64.6%	66.1%	67.3%

* Sections with Schedule Types of Internet (NET), Interactive Video (IV), HYBD (Hybrid Distance), HN (High School Concurrent Online), and Telecourse (TV).