

*Wyoming Community College Commission*

**Commissioners**

**Mr. Larry Atwell, Cheyenne**  
**Mr. Bruce Brown, Devils Tower**  
**Ms. Katherine Dooley, Powell**  
**Dr. Craig Frederick, Guernsey**  
**Dr. Jackie Freeze, Rock Springs**  
**Ms. Sandra Meyer, Evanston**  
**Ms. Julia Newman, Torrington**

**Ex-officios**

**Governor Matt Mead**  
**State Superintendent Jillian Balow**  
**Executive Director**  
**James O. Rose**  
**Phone: 307-777-7763**  
**Fax: 307-777-6567**  
**[www.communitycolleges.wy.edu](http://www.communitycolleges.wy.edu)**

*2300 Capitol Avenue, 5th Floor - Suite B, Cheyenne, Wyoming 82002*



**WYOMING**  
**COMMUNITY COLLEGES**

**Wyoming Community College System**  
**Spring 2017**  
**Enrollment Report**

**Casper College ~ Central Wyoming College ~ Eastern Wyoming College**  
**Laramie County Community College ~ Northwest College**  
**Northern Wyoming Community College District**  
**Western Wyoming Community College**

WYOMING COMMUNITY COLLEGE SYSTEM  
SPRING 2017 ENROLLMENT REPORT

This report provides a look at the Spring 2017 term enrollment in categories such as student load, location and demographics of the community college student population. The content and format of this report have been developed through a collaborative effort between the Wyoming Community College Commission (WCCC), the Executive Council and the Data Governance/Institutional Research Council members representing the seven community colleges.

Effective with the summer 2016 reporting term, data were extracted from the Central Station Instance (CSI) using one report rather than consolidating individual customized reports from all seven colleges. All enrollment reports have the foundation of:

- Student enrollment being counted the day after 12% of each course has been completed.
- "Full-time equivalency means the number of approved academic or vocational-technical credit hours for each class for which students are enrolled divided by twelve (12)". W.S. 21-18-102 (a)(xii).
- Student headcount includes students who are enrolled for a letter grade, pass/fail designation as well as those who are auditing a course.
- "Duplicated headcount" means that within a survey or polling exercise of numerous programs and/or courses, a student may be counted more than once". WCCC Rules-2015
- "Unduplicated headcount" means that within a survey or polling exercise of numerous programs and/or courses, a student shall be counted only once". WCCC Rules- 2015

The implementation of this robust reporting system has enabled the following enhancements to the enrollment reports:

- Where applicable, graphs have been included with each table.
- The median age of the student population has been added to Table 2.
- College service area and border states are now delineated in Tables 4 and 5.
- Credit Hours are subtotaled in Table 6.
- Level of Instruction "4", reflecting distance education, has been added to Table 8, along with the category "Unknown."
- Table 14 furnishes three additional categories of student enrollment data; concurrent, dual and remedial.
- Table 15 provides additional information that ties to the statutorily mandated 4<sup>th</sup> level of instruction code for distance education.

\*Full-time equivalencies (FTE) reported in tables 1, 5, 7b, 8 and 10 may vary slightly due to rounding in the enrollment calculations.

\*\*The data presented in this report may vary from enrollment reports posted on Wyoming college websites due to extraction date and sub-set parameter differences.

For additional information and discussion regarding this report, please refer to the Wyoming Community College Commission's meeting minutes for October 13, 2017 located on the Commission's website at <http://communitycolleges.wy.edu>.



# SPRING '17 ENROLLMENT REPORT

Table 1: Credit Headcount & FTE

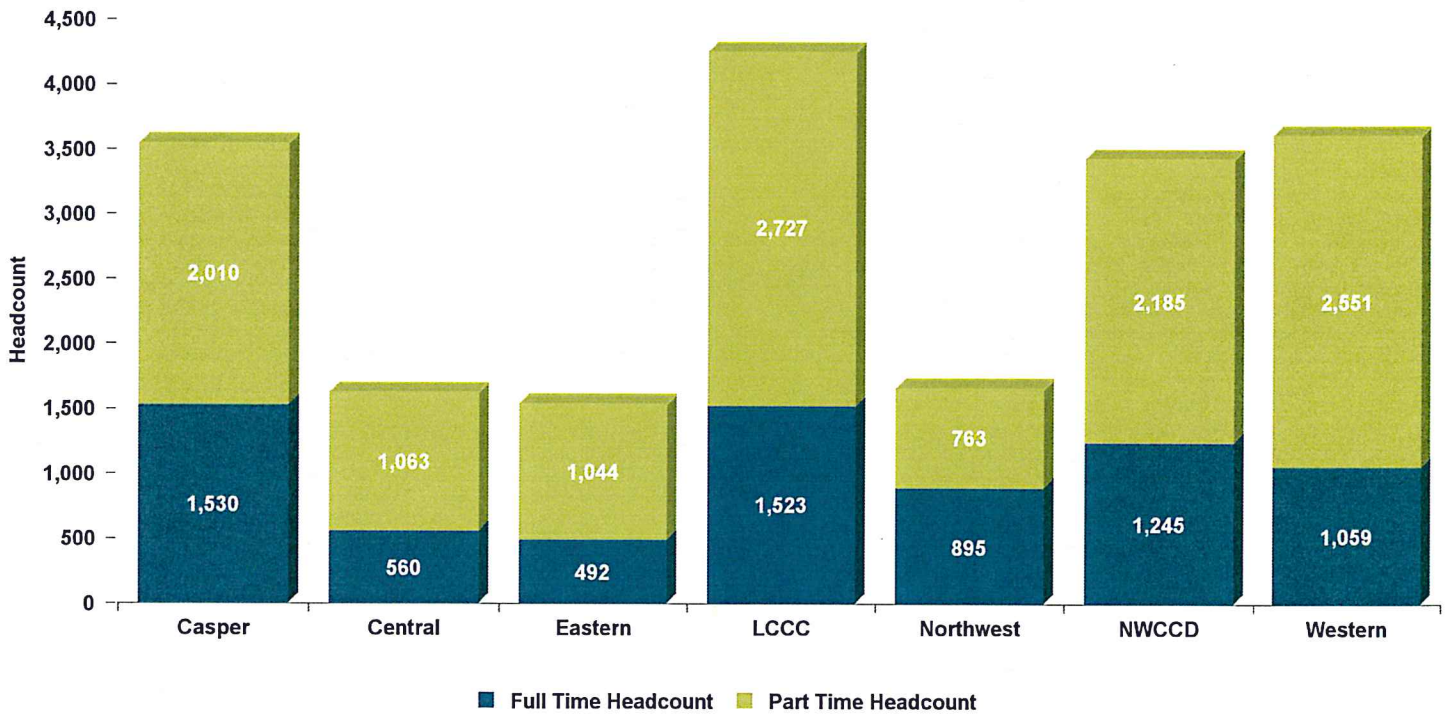
College	CREDIT HEADCOUNT			
	Full Time	Part Time	Total	%
Casper	1,530	2,010	3,540	18.0%
Central	560	1,063	1,623	8.3%
Eastern	492	1,044	1,536	7.8%
LCCC	1,523	2,727	4,250	21.6%
Northwest	895	763	1,658	8.4%
NWCCD	1,245	2,185	3,430	17.5%
Western	1,059	2,551	3,610	18.4%
<b>Total</b>	<b>7,304</b>	<b>12,343</b>	<b>19,647</b>	<b>100.0%</b>

Percent                    37.2%                    62.8%                    100.0%

College	CREDIT FTE			
	Full Time	Part Time	Total	%
Casper	1,922.9	904.5	2,827.3	20.4%
Central	703.9	379.8	1,083.8	7.8%
Eastern	637.2	384.6	1,021.8	7.4%
LCCC	1,838.7	1,210.7	3,049.5	21.9%
Northwest	1,180.7	306.3	1,487.0	10.7%
NWCCD	1,550.2	660.7	2,211.0	15.9%
Western	1,376.4	836.3	2,212.7	15.9%
<b>Total</b>	<b>9,210.0</b>	<b>4,683.0</b>	<b>13,893.0</b>	<b>100.0%</b>

Percent                    66.3%                    33.7%                    100.0%

Source: Wyoming Community College Commission







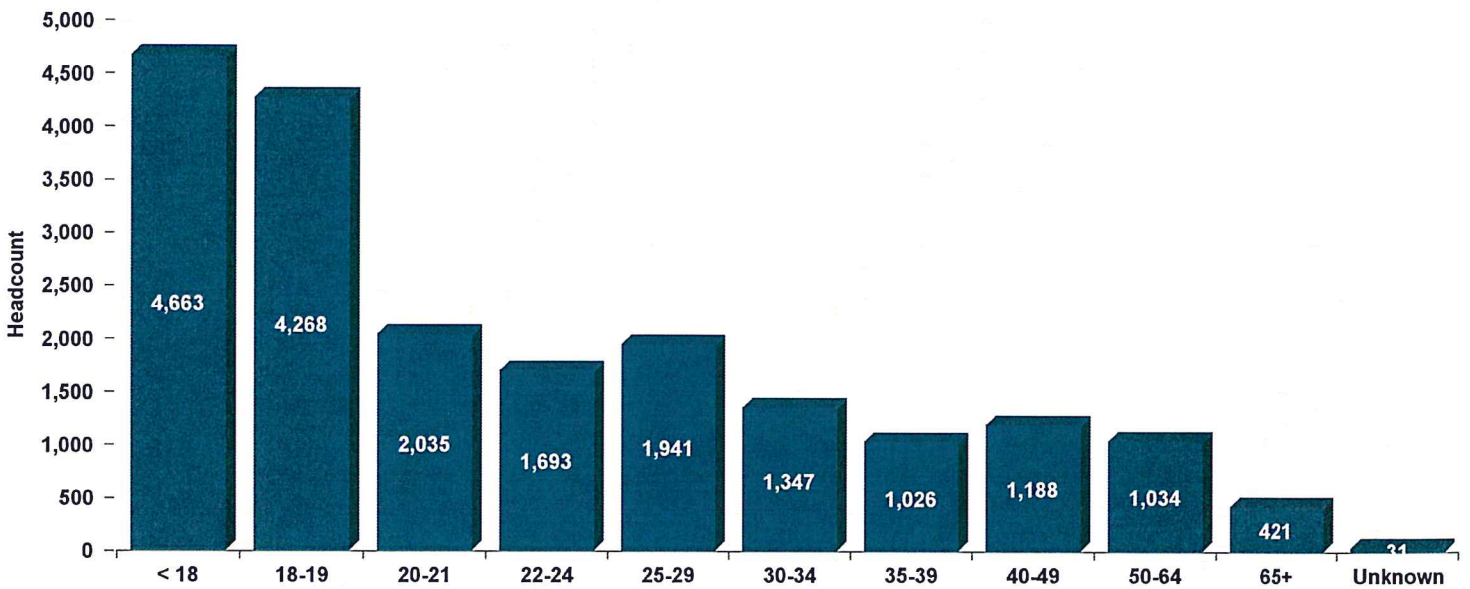
# SPRING '17 ENROLLMENT REPORT

Table 2: Credit Headcount by Age

College	< 18	18-19	20-21	22-24	25-29	30-34	35-39	40-49	50-64	65+	Unknown	TOTAL
Casper	506	826	465	393	434	262	198	204	134	117	1	3,540
Central	373	314	144	93	188	147	97	127	100	40	0	1,623
Eastern	658	285	101	83	86	64	49	83	71	55	1	1,536
LCCC	967	922	548	477	478	257	182	176	164	71	8	4,250
Northwest	376	527	206	131	121	77	48	78	68	25	1	1,658
NWCCD	607	758	307	262	348	300	241	270	277	59	1	3,430
Western	1,176	636	264	254	286	240	211	250	220	54	19	3,610
<b>Total</b>	<b>4,663</b>	<b>4,268</b>	<b>2,035</b>	<b>1,693</b>	<b>1,941</b>	<b>1,347</b>	<b>1,026</b>	<b>1,188</b>	<b>1,034</b>	<b>421</b>	<b>31</b>	<b>19,647</b>
Percent	23.7%	21.7%	10.4%	8.6%	9.9%	6.9%	5.2%	6.0%	5.3%	2.1%	0.2%	100.0%

Average Age	Casper	Central	Eastern	LCCC	Northwest	NWCCD	Western	Systemwide
Female	26.1	27.6	24.1	24.7	24.9	24.8	24.4	25.13
Male	27.5	27.0	25.2	24.4	22.4	30.7	26.9	26.83
Full Time	22.8	23.8	21.6	23.0	21.1	22.2	22.2	22.44
Part Time	29.7	29.2	25.9	25.5	27.1	31.1	27.1	27.96
Median Age	Casper	Central	Eastern	LCCC	Northwest	NWCCD	Western	Systemwide
Female	21	21	18	20	19	20	19	20
Male	22	21	18	20	19	26	20	21
Full Time	20	19	19	20	19	19	19	19
Part Time	24	24	17	20	20	27	20	22

Students with unreported birth dates are excluded. The male and female statistics exclude students with unreported gender.  
Source: Wyoming Community College Commission



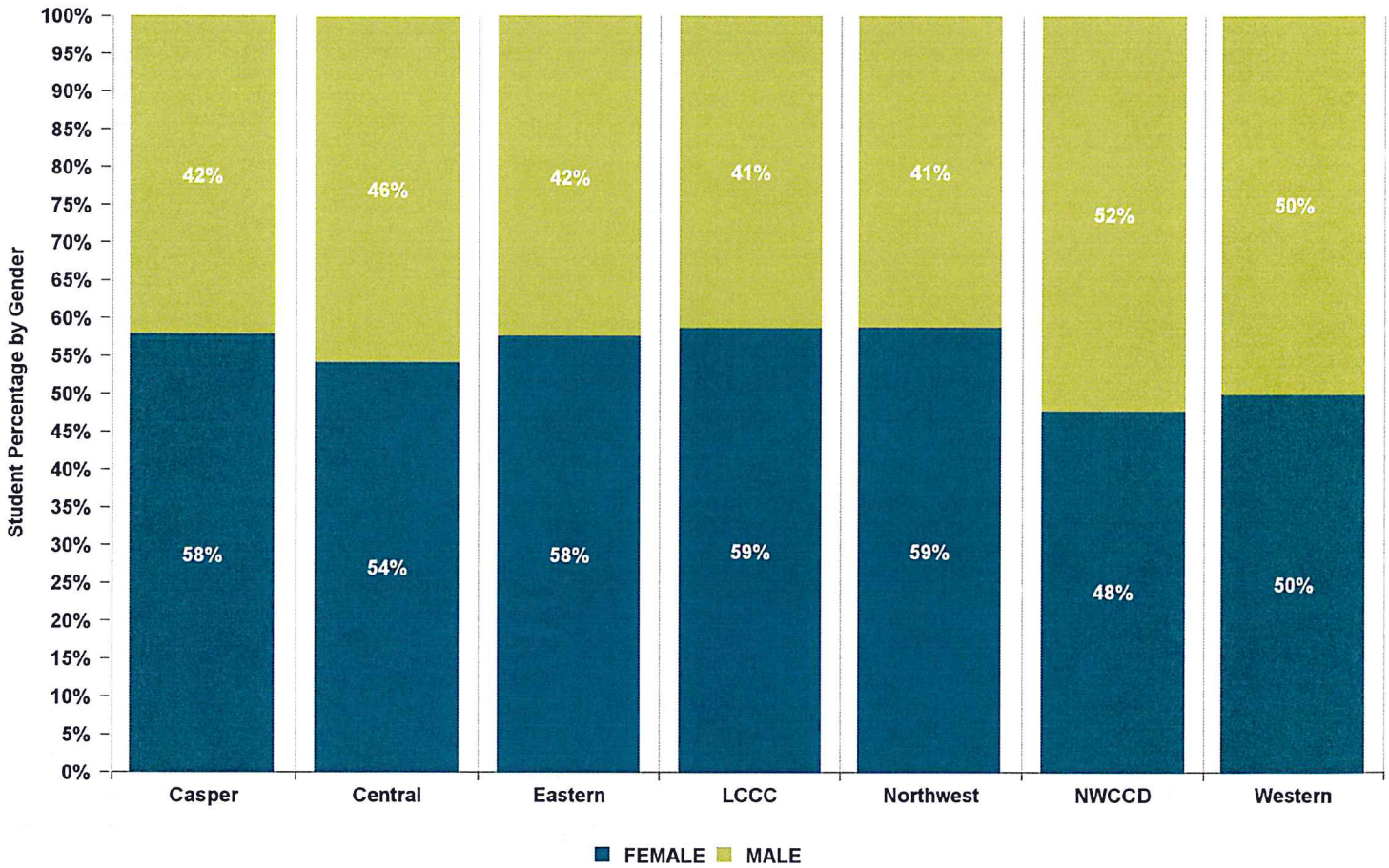


# SPRING '17 ENROLLMENT REPORT

Table 3: Credit Headcount by Gender

College	SPRING				TOTAL
	Male	% Male	Female	% Female	
Casper	1,495	42.2%	2,045	57.8%	3,540
Central	741	45.7%	877	54.0%	1,623
Eastern	652	42.4%	884	57.6%	1,536
LCCC	1,759	41.4%	2,491	58.6%	4,250
Northwest	685	41.3%	973	58.7%	1,658
NWCCD	1,793	52.3%	1,637	47.7%	3,430
Western	1,809	50.1%	1,801	49.9%	3,610
<b>Total</b>	<b>8,934</b>	<b>45.5%</b>	<b>10,708</b>	<b>54.5%</b>	<b>19,647</b>

These data do not reflect those not reported as male or female.  
 Source: Wyoming Community College Commission







# SPRING '17 ENROLLMENT REPORT

Table 4: Credit Headcount by Residency

County	Casper	Central	Eastern	LCCC	Northwest	NWCCD	Western	Total	% of In-State	County Pop.**	****Credit Students as % of Pop.
Albany	33	3	15	<u>781</u>	8	6	8	854	4.9%	37,956	2.2%
Big Horn	37	3	4	7	<u>372</u>	24	5	452	2.6%	12,022	3.8%
Campbell	88	11	19	27	11	<u>1,521</u>	8	1,685	9.7%	49,220	3.4%
Carbon	35	43	4	42	7	10	<u>244</u>	385	2.2%	15,559	2.5%
Converse	156	10	<u>349</u>	13	4	24	6	562	3.2%	14,236	3.9%
Crook	15	1	<u>107</u>	4	12	85	0	224	1.3%	7,444	3.0%
Fremont	61	<u>903</u>	13	28	13	18	17	1,053	6.1%	40,315	2.6%
Goshen	28	3	<u>406</u>	25	4	13	1	480	2.8%	13,383	3.6%
Hot Springs	18	<u>88</u>	3	7	6	3	2	127	0.7%	4,741	2.7%
Johnson	25	3	9	5	7	<u>176</u>	2	227	1.3%	8,585	2.6%
Laramie	85	15	35	<u>2,638</u>	11	31	7	2,822	16.3%	97,121	2.9%
Lincoln	21	33	3	11	11	5	<u>306</u>	390	2.3%	18,722	2.1%
Natrona	<u>2,337</u>	32	21	32	6	32	37	2,497	14.4%	82,178	3.0%
Niobrara	12	2	<u>67</u>	5	0	1	0	87	0.5%	2,542	3.4%
Park	34	9	5	11	<u>722</u>	30	5	816	4.7%	29,228	2.8%
Platte	51	6	<u>104</u>	39	2	10	2	214	1.2%	8,812	2.4%
Sheridan	34	6	8	18	9	<u>916</u>	6	997	5.8%	30,009	3.3%
Sublette	24	15	2	14	9	12	<u>162</u>	238	1.4%	9,899	2.4%
Sweetwater	31	10	8	25	7	13	<u>1,912</u>	2,006	11.6%	44,626	4.5%
Teton	27	<u>138</u>	2	11	6	7	5	196	1.1%	23,125	0.8%
Uinta	17	21	3	29	19	4	<u>558</u>	651	3.8%	20,822	3.1%
Unknown	0	0	0	1	0	1	0	2	0.0%	n/a	n/a
Washakie	37	8	3	4	<u>51</u>	30	3	136	0.8%	8,328	1.6%
Weston	21	2	<u>157</u>	7	3	29	1	220	1.3%	7,234	3.0%
In Tax District	2,337	903	406	2,638	722	916	1,912	9,834			
In Service Area ***	0	226	784	781	423	1,697	1,270	5,181			
Out of Service Area	890	236	157	365	155	388	115	2,306			
<b>Total In-State</b>	<b>3,227</b>	<b>1,365</b>	<b>1,347</b>	<b>3,784</b>	<b>1,300</b>	<b>3,001</b>	<b>3,297</b>	<b>17,321</b>			
Border States *	162	86	149	302	211	294	159	1,363			
All Other States	127	154	16	134	77	109	81	698			
International	24	18	24	30	70	26	73	265			
<b>Total</b>	<b>3,540</b>	<b>1,623</b>	<b>1,536</b>	<b>4,250</b>	<b>1,658</b>	<b>3,430</b>	<b>3,610</b>	<b>19,647</b>			
% In Tax District	66.0%	55.6%	26.4%	62.1%	43.5%	26.7%	53.0%	50.1%			
% In Service Area	0.0%	13.9%	51.0%	18.4%	25.5%	49.5%	35.2%	26.4%			
% Out of Service Area	25.1%	14.5%	10.2%	8.6%	9.3%	11.3%	3.2%	11.7%			
<b>% In-State</b>	<b>91.2%</b>	<b>84.1%</b>	<b>87.7%</b>	<b>89.0%</b>	<b>78.4%</b>	<b>87.5%</b>	<b>91.3%</b>	<b>88.2%</b>			
% Border States *	4.6%	5.3%	9.7%	7.1%	12.7%	8.6%	4.4%	6.9%			
% All Other States	3.6%	9.5%	1.0%	3.2%	4.6%	3.2%	2.2%	3.6%			
% International	0.7%	1.1%	1.6%	0.7%	4.2%	0.8%	2.0%	1.3%			

\* Border states include Colorado, Utah, Idaho, Montana, South Dakota, and Nebraska.

\*\* US Census Bureau Estimate [www.census.gov/quickfacts/table](http://www.census.gov/quickfacts/table)

\*\*\* Casper is the only college with one service area.

\*\*\*\* Total In-State Credit Students as % of Population: 3.0%

**BOLD:**  
College Location

BLUE:  
College Service Area

Source: Wyoming Community College Commission



# SPRING '17 ENROLLMENT REPORT

Table 5: Credit FTE by Residency

WY County	Casper	Central	Eastern	LCCC	Northwest	NWCCD	Western	Total
Albany	21.1	1.6	13.4	<u>490.2</u>	7.0	5.6	3.0	542.0
Big Horn	36.6	2.3	3.6	5.6	<u>277.1</u>	19.3	3.5	347.9
Campbell	77.6	8.7	15.3	24.2	13.4	<u>796.1</u>	3.5	938.9
Carbon	35.7	25.3	5.3	40.0	7.3	9.9	<u>114.7</u>	238.1
Converse	132.2	7.5	<u>187.8</u>	11.6	4.8	10.9	3.3	358.1
Crook	13.2	0.3	<u>61.6</u>	3.2	14.2	47.3	0.0	139.7
Fremont	59.3	<u>583.2</u>	14.1	25.8	14.6	21.8	6.3	725.0
Goshen	25.9	1.8	<u>225.3</u>	22.6	5.2	14.0	0.2	294.9
Hot Springs	15.5	<u>55.1</u>	4.2	3.5	5.4	1.7	1.0	86.4
Johnson	23.6	1.8	7.5	2.1	8.0	<u>113.1</u>	0.3	156.4
Laramie	61.9	7.6	37.8	<u>1,820.2</u>	14.0	29.8	5.8	1,977.2
Lincoln	10.7	18.5	3.6	12.8	13.6	5.0	<u>186.7</u>	250.8
Natrona	<u>1,733.4</u>	24.8	22.6	24.3	5.3	24.1	9.8	1,844.2
Niobrara	13.9	2.6	<u>31.0</u>	5.2	0.0	0.1	0.0	52.8
Park	28.2	4.0	2.8	8.3	<u>553.3</u>	28.3	2.5	627.5
Platte	46.2	6.2	<u>52.3</u>	30.3	1.9	9.4	1.7	148.0
Sheridan	26.6	3.3	7.3	19.3	8.7	<u>600.1</u>	2.9	668.2
Sublette	25.3	13.9	1.8	11.5	9.9	12.4	<u>81.8</u>	156.6
Sweetwater	23.1	8.6	9.8	22.3	9.3	7.6	<u>1,169.6</u>	1,250.2
Teton	15.4	<u>83.8</u>	1.6	6.3	1.5	8.3	3.1	119.9
Uinta	14.8	13.0	4.4	15.6	15.0	3.9	<u>322.4</u>	389.1
Unknown	0.0	0.0	0.0	1.1	0.0	0.3	0.0	1.3
Washakie	40.1	5.0	3.4	4.8	<u>44.4</u>	29.0	0.6	127.2
Weston	24.5	0.9	<u>78.8</u>	7.8	3.0	15.1	0.2	130.3
In Tax District	1,733.4	583.2	225.3	1,820.2	553.3	600.1	1,169.6	6,685.0
In Service Area **	0.0	138.9	411.6	490.2	321.5	909.2	705.6	2,977.0
Out of Service Area	771.3	157.6	158.4	307.7	162.2	303.7	47.8	1,908.7
<b>Total In-State</b>	<b>2,504.7</b>	<b>879.7</b>	<b>795.3</b>	<b>2,618.1</b>	<b>1,036.9</b>	<b>1,813.0</b>	<b>1,923.0</b>	<b>11,570.7</b>
Border States *	166.03	69.79	176.5	296.33	266.63	266.13	143.87	1,385.28
All Other States	125.1	119.3	19.2	98.1	82.5	92.0	56.4	592.6
International	31.5	15.0	30.8	36.9	101.0	39.8	89.4	344.4
<b>Total</b>	<b>2,827.3</b>	<b>1,083.8</b>	<b>1,021.8</b>	<b>3,049.5</b>	<b>1,487.0</b>	<b>2,211.0</b>	<b>2,212.7</b>	<b>13,893.0</b>
% In Tax District	61.3%	53.8%	22.0%	59.7%	37.2%	27.1%	52.9%	48.1%
% In Service Area	0.0%	12.8%	40.3%	16.1%	21.6%	41.1%	31.9%	21.4%
% Out of Service Area	27.3%	14.5%	15.5%	10.1%	10.9%	13.7%	2.2%	13.7%
% In-State	88.6%	81.2%	77.8%	85.9%	69.7%	82.0%	86.9%	83.3%
% Border States *	5.9%	6.4%	17.3%	9.7%	17.9%	12.0%	6.5%	10.0%
% All Other States	4.4%	11.0%	1.9%	3.2%	5.5%	4.2%	2.5%	4.3%
% International	1.1%	1.4%	3.0%	1.2%	6.8%	1.8%	4.0%	2.5%

\* Border states include Colorado, Utah, Idaho, Montana, South Dakota, and Nebraska.

\*\* Casper is the only college with one service area.

Source: Wyoming Community College Commission





# SPRING '17 ENROLLMENT REPORT

Table 6: Headcount by Credit Hours

Credit Hours	Casper	Central	Eastern	LCCC	Northwest	NWCCD	Western	Total	Percent
<1	4	62	3	1	22	607	300	999	5.1%
1	158	85	204	111	73	250	305	1,186	6.0%
2	103	64	56	217	21	30	210	701	3.6%
3	315	336	248	853	202	511	663	3,128	15.9%
<b>Sub Total</b>	<b>580</b>	<b>547</b>	<b>511</b>	<b>1,182</b>	<b>318</b>	<b>1,398</b>	<b>1,478</b>	<b>6,014</b>	<b>30.6%</b>
4	351	171	146	294	126	182	231	1,501	7.6%
5	156	16	35	56	38	22	39	362	1.8%
6	262	103	117	345	83	132	327	1,369	7.0%
<b>Sub Total</b>	<b>769</b>	<b>290</b>	<b>298</b>	<b>695</b>	<b>247</b>	<b>336</b>	<b>597</b>	<b>3,232</b>	<b>16.5%</b>
7	200	69	72	218	65	114	175	913	4.6%
8	106	47	42	122	15	69	62	463	2.4%
9	110	58	51	173	42	48	104	586	3.0%
<b>Sub Total</b>	<b>416</b>	<b>174</b>	<b>165</b>	<b>513</b>	<b>122</b>	<b>231</b>	<b>341</b>	<b>1,962</b>	<b>10.0%</b>
10	163	35	45	188	45	156	100	732	3.7%
11	82	17	25	149	31	64	35	403	2.1%
12	279	130	66	405	124	195	160	1,359	6.9%
<b>Sub Total</b>	<b>524</b>	<b>182</b>	<b>136</b>	<b>742</b>	<b>200</b>	<b>415</b>	<b>295</b>	<b>2,494</b>	<b>12.7%</b>
13	264	80	56	309	111	260	132	1,212	6.2%
14	255	77	82	206	100	212	130	1,062	5.4%
15	199	66	60	200	115	170	120	930	4.7%
<b>Sub Total</b>	<b>718</b>	<b>223</b>	<b>198</b>	<b>715</b>	<b>326</b>	<b>642</b>	<b>382</b>	<b>3,204</b>	<b>16.3%</b>
16	138	69	58	169	101	125	155	815	4.1%
17	127	35	47	76	102	133	116	636	3.2%
18	78	39	65	63	81	72	80	478	2.4%
<b>Sub Total</b>	<b>343</b>	<b>143</b>	<b>170</b>	<b>308</b>	<b>284</b>	<b>330</b>	<b>351</b>	<b>1,929</b>	<b>9.8%</b>
19	79	24	34	35	68	24	62	326	1.7%
20	39	10	10	9	48	17	40	173	0.9%
21	18	9	10	17	15	14	31	114	0.6%
<b>Sub Total</b>	<b>136</b>	<b>43</b>	<b>54</b>	<b>61</b>	<b>131</b>	<b>55</b>	<b>133</b>	<b>613</b>	<b>3.1%</b>
>21	54	21	4	34	30	23	33	199	1.0%
<b>Sub Total</b>	<b>54</b>	<b>21</b>	<b>4</b>	<b>34</b>	<b>30</b>	<b>23</b>	<b>33</b>	<b>199</b>	<b>1.0%</b>
<b>Total</b>	<b>3,540</b>	<b>1,623</b>	<b>1,536</b>	<b>4,250</b>	<b>1,658</b>	<b>3,430</b>	<b>3,610</b>	<b>19,647</b>	<b>100.0%</b>

Source: Wyoming Community College Commission





# SPRING '17 ENROLLMENT REPORT

Table 7a: Credit Headcount by Program of Study

College	Full Time			Part Time			Total		
	Transfer Preparation*	Career & Technical Education (CTE)**	Not Seeking Degree or Certificate	Transfer Preparation*	Career & Technical Education (CTE)**	Not Seeking Degree or Certificate	Transfer Preparation*	Career & Technical Education (CTE)**	Not Seeking Degree or Certificate
Casper	1,160	342	28	556	249	1,205	1,716	591	1,233
Central	312	231	17	194	208	661	506	439	678
Eastern	228	168	96	131	59	854	359	227	950
LCCC	1,032	455	36	908	330	1,489	1,940	785	1,525
Northwest	650	221	24	174	60	529	824	281	553
NWCCD	812	411	22	438	1,024	723	1,250	1,435	745
Western	675	343	41	434	309	1,808	1,109	652	1,849
<b>Total</b>	<b>4,869</b>	<b>2,171</b>	<b>264</b>	<b>2,835</b>	<b>2,239</b>	<b>7,269</b>	<b>7,704</b>	<b>4,410</b>	<b>7,533</b>
<b>Percent</b>	<b>66.7%</b>	<b>29.7%</b>	<b>3.6%</b>	<b>23.0%</b>	<b>18.1%</b>	<b>58.9%</b>	<b>39.2%</b>	<b>22.4%</b>	<b>38.3%</b>

\*Transfer Preparation programs provide students with the first two years of an education sequence designed to transition to a Bachelor's Degree program. Programs generally lead to an AA, AB, AFA or AS degree.

\*\*Career Technical programs are designed to prepare students for entry into a specific occupational area or advancement in the workplace immediately upon completion/graduation. Programs generally lead to Certificates or an ADN or AAS degree.

Source: Wyoming Community College Commission



# SPRING '17 ENROLLMENT REPORT

Table 7b: FTE by Program of Study

College	Full Time			Part Time			Total		
	Transfer Preparation*	Career & Technical Education (CTE)**	Not Seeking Degree or Certificate	Transfer Preparation*	Career & Technical Education (CTE)**	Not Seeking Degree or Certificate	Transfer Preparation*	Career & Technical Education (CTE)**	Not Seeking Degree or Certificate
Casper	1,434.2	456.5	32.2	313.2	167.3	423.9	1,747.4	623.8	456.1
Central	389.0	295.0	19.8	98.3	107.3	174.2	487.4	402.3	194.0
Eastern	297.8	217.3	122.1	69.7	24.3	290.6	367.4	241.7	412.7
LCCC	1,224.3	568.5	45.9	514.9	204.7	491.2	1,739.2	773.2	537.1
Northwest	860.0	292.9	27.8	88.9	36.0	181.4	948.9	328.9	209.2
NWCCD	989.7	533.2	27.3	253.8	193.4	213.6	1,243.5	726.5	241.0
Western	893.2	434.7	48.5	186.0	153.7	496.5	1,079.3	588.4	545.0
<b>Total</b>	<b>6,088.2</b>	<b>2,798.1</b>	<b>323.7</b>	<b>1,524.8</b>	<b>886.7</b>	<b>2,271.4</b>	<b>7,613.0</b>	<b>3,684.8</b>	<b>2,595.1</b>
<b>Percent</b>	<b>66.1%</b>	<b>30.4%</b>	<b>3.5%</b>	<b>32.6%</b>	<b>18.9%</b>	<b>48.5%</b>	<b>54.8%</b>	<b>26.5%</b>	<b>18.7%</b>

\*Transfer Preparation programs provide students with the first two years of an education sequence designed to transition to a Bachelor's Degree program. Programs generally lead to an AA, AB, AFA or AS degree.

\*\*Career Technical programs are designed to prepare students for entry into a specific occupational area or advancement in the workplace immediately upon completion/graduation. Programs generally lead to Certificates or an ADN or AAS degree.

Source: Wyoming Community College Commission



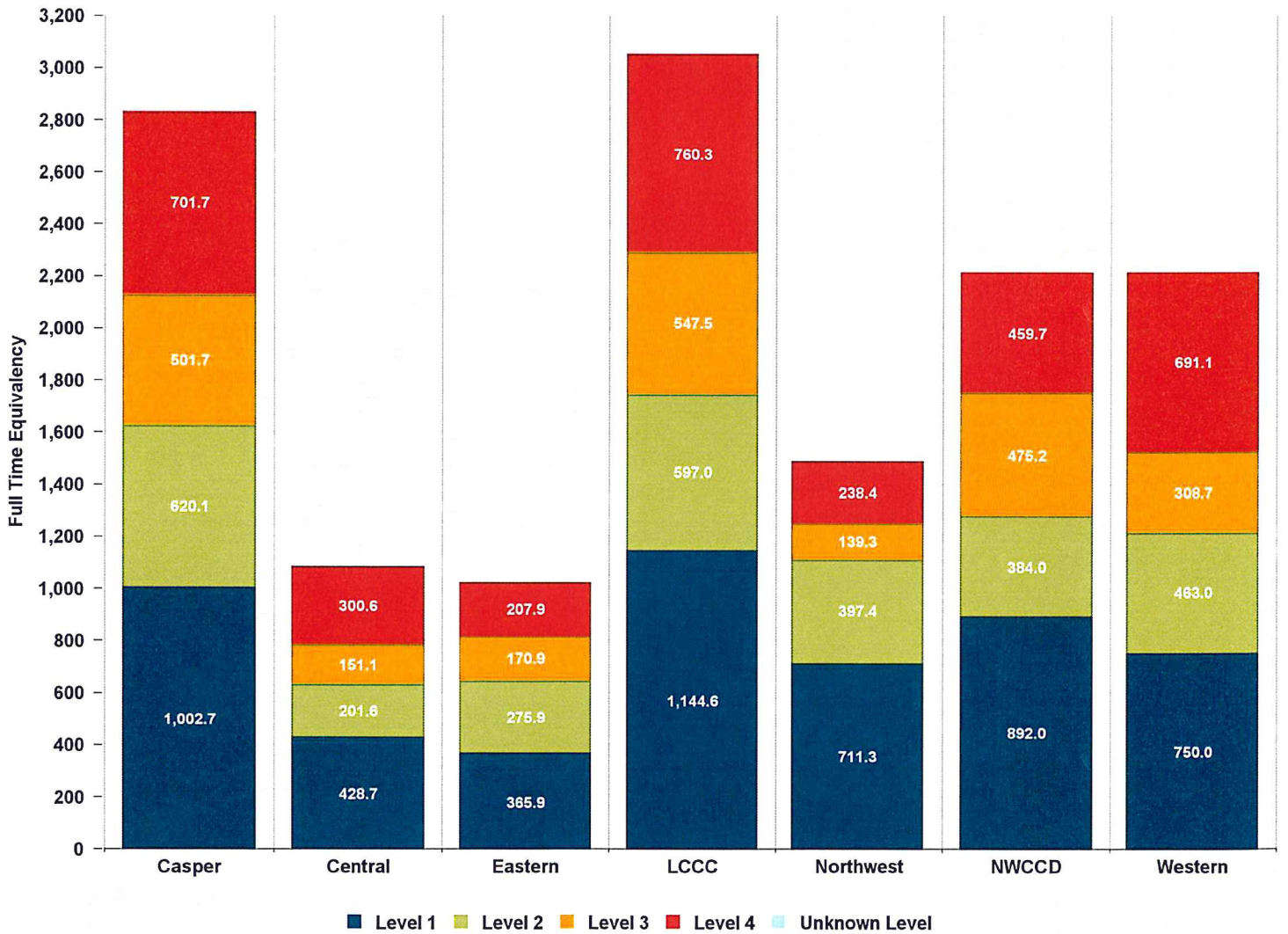


# SPRING '17 ENROLLMENT REPORT

Table 8: Level of Instruction

College	Level 1 FTE	Level 2 FTE	Level 3 FTE	Level 4 FTE	Unknown Level FTE	TOTAL
Casper	1,002.7	620.1	501.7	701.7	1.2	2,827.3
Central	428.7	201.6	151.1	300.6	1.8	1,083.8
Eastern	365.9	275.9	170.9	207.9	1.1	1,021.8
LCCC	1,144.6	597.0	547.5	760.3	0.0	3,049.5
Northwest	711.3	397.4	139.2	238.4	0.6	1,487.0
NWCCD	892.0	384.0	475.2	459.7	0.0	2,211.0
Western	750.0	463.0	308.7	691.1	0.0	2,212.7
<b>Total</b>	<b>5,295.3</b>	<b>2,939.1</b>	<b>2,294.3</b>	<b>3,359.8</b>	<b>4.6</b>	<b>13,893.0</b>

Level 1 = Lecture, Level 2 = Laboratory, Level 3 = High Technology, Level 4 = Distance  
 Source: Wyoming Community College Commission



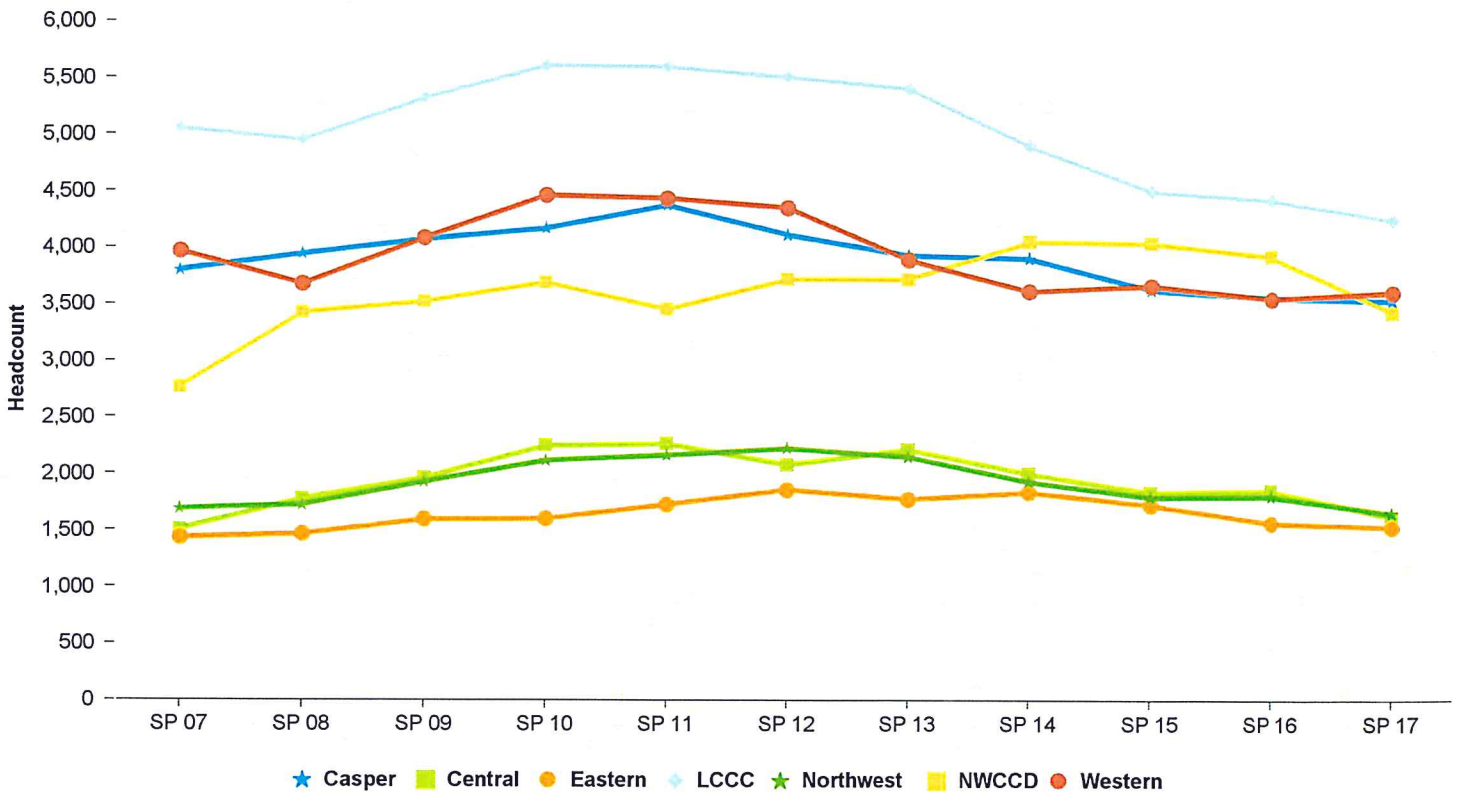


# SPRING '17 ENROLLMENT REPORT

Table 9: History of Headcount

Semester	Casper	Central	Eastern	LCCC	Northwest	NWCCD	Western	TOTAL	Percent Change
SPRING 07	3,801	1,509	1,435	5,051	1,691	2,766	3,967	20,220	N/A
SPRING 08	3,945	1,779	1,466	4,948	1,727	3,422	3,676	20,963	3.7%
SPRING 09	4,076	1,964	1,597	5,322	1,931	3,521	4,086	22,497	7.3%
SPRING 10	4,173	2,250	1,603	5,609	2,120	3,691	4,462	23,908	6.3%
SPRING 11	4,380	2,268	1,731	5,600	2,170	3,453	4,437	24,039	0.5%
SPRING 12	4,120	2,084	1,863	5,512	2,228	3,722	4,355	23,884	-0.6%
SPRING 13	3,938	2,220	1,780	5,411	2,157	3,723	3,896	23,125	-3.2%
SPRING 14	3,912	2,006	1,842	4,901	1,936	4,053	3,617	22,267	-3.7%
SPRING 15	3,635	1,841	1,729	4,504	1,801	4,042	3,669	21,221	-4.7%
SPRING 16	3,567	1,861	1,570	4,430	1,809	3,927	3,555	20,719	-2.4%
SPRING 17	3,540	1,623	1,536	4,250	1,658	3,430	3,610	19,647	-5.2%
10-Yr Change	-6.9%	7.6%	7.0%	-15.9%	-2.0%	24.0%	-9.0%	-2.8%	
5-Yr Change	-14.1%	-22.1%	-17.6%	-22.9%	-25.6%	-7.8%	-17.1%	-17.7%	
1-Yr Change	-0.8%	-12.8%	-2.2%	-4.1%	-8.3%	-12.7%	1.5%	-5.2%	

Source: Wyoming Community College Commission





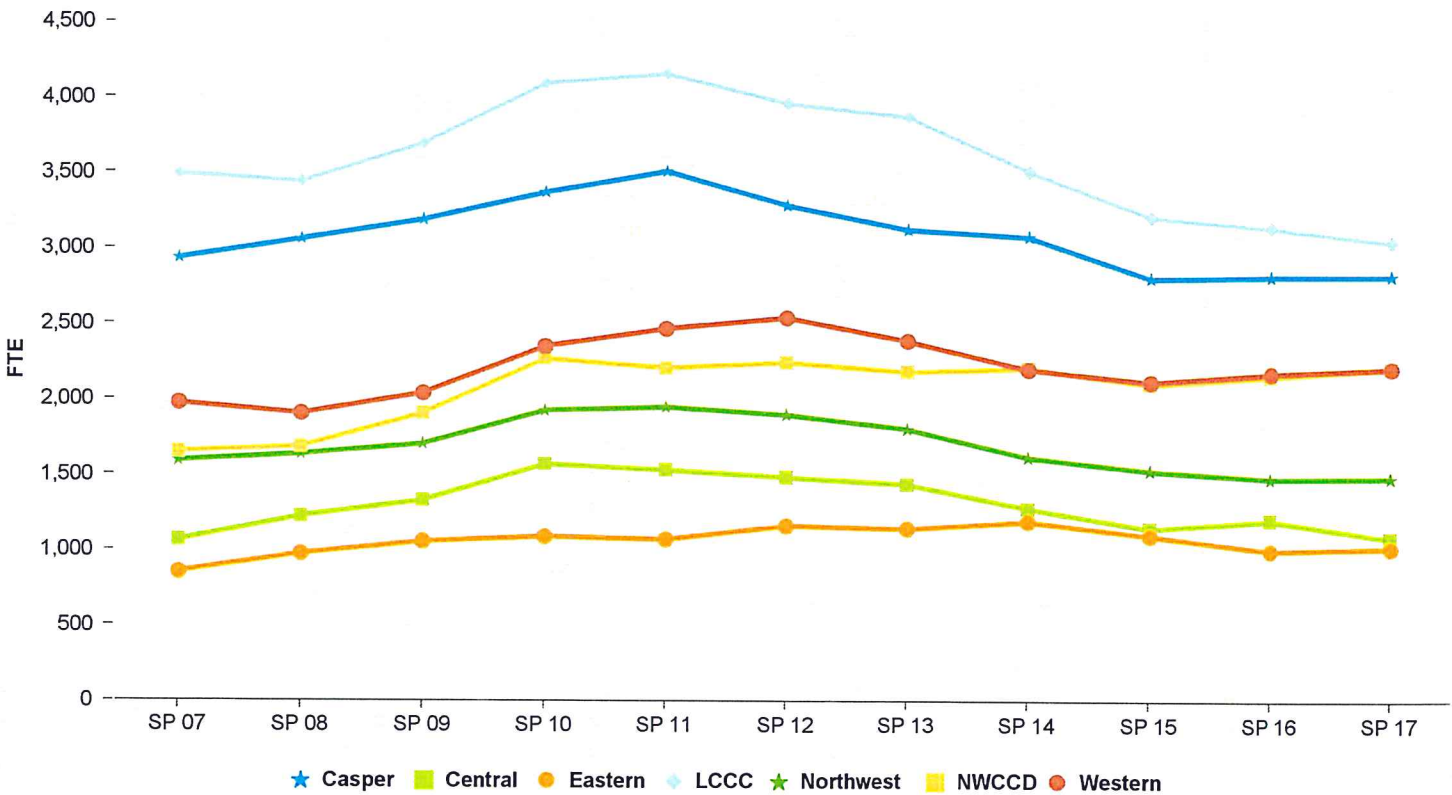


# SPRING '17 ENROLLMENT REPORT

Table 10: History of FTE Enrollment

Semester	Casper	Central	Eastern	LCCC	Northwest	NWCCD	Western	TOTAL	Percent Change
SPRING 07	2,934.1	1,064.3	853.5	3,491.5	1,591.6	1,649.9	1,973.1	13,558.0	N/A
SPRING 08	3,061.6	1,225.3	975.6	3,441.2	1,636.0	1,684.8	1,904.1	13,928.6	2.7%
SPRING 09	3,191.3	1,330.1	1,055.4	3,695.8	1,704.0	1,906.3	2,040.7	14,923.6	7.1%
SPRING 10	3,374.1	1,570.2	1,090.4	4,095.2	1,927.2	2,268.6	2,351.4	16,677.1	11.7%
SPRING 11	3,513.4	1,533.0	1,071.6	4,158.7	1,950.2	2,208.7	2,469.3	16,904.9	1.4%
SPRING 12	3,289.3	1,485.0	1,164.4	3,963.1	1,900.0	2,246.5	2,543.4	16,591.6	-1.9%
SPRING 13	3,131.5	1,442.3	1,145.7	3,876.4	1,808.9	2,185.7	2,390.8	15,981.3	-3.7%
SPRING 14	3,084.4	1,283.1	1,194.8	3,515.4	1,620.8	2,211.0	2,203.2	15,112.7	-5.4%
SPRING 15	2,810.9	1,149.0	1,100.9	3,216.4	1,533.2	2,104.3	2,121.6	14,036.2	-7.1%
SPRING 16	2,825.7	1,206.0	1,003.2	3,145.1	1,482.7	2,158.7	2,179.8	14,001.3	-0.2%
SPRING 17	2,827.3	1,083.8	1,021.8	3,049.5	1,487.0	2,211.0	2,212.7	13,893.1	-0.8%
10-Yr Change	-3.6%	1.8%	19.7%	-12.7%	-6.6%	34.0%	12.1%	2.5%	
5-Yr Change	-14.0%	-27.0%	-12.2%	-23.1%	-21.7%	-1.6%	-13.0%	-16.3%	
1-Yr Change	0.1%	-10.1%	1.9%	-3.0%	0.3%	2.4%	1.5%	-0.8%	

Source: Wyoming Community College Commission



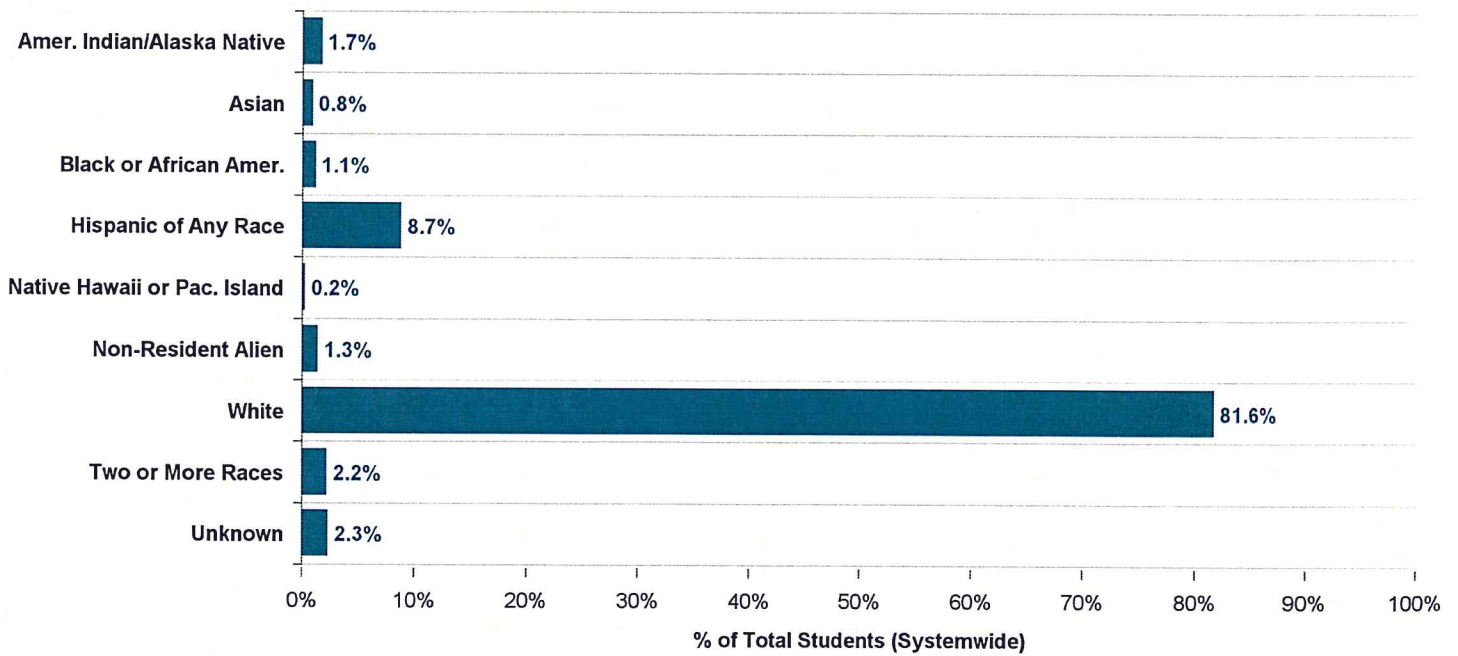


# SPRING '17 ENROLLMENT REPORT

Table 11: Headcount by Race/Ethnicity

Race/Ethnicity	Casper	Central	Eastern	LCCC	Northwest	NWCCD	Western	Total	%
Amer. Indian/Alaska Native	14	179	16	43	7	46	21	326	1.7%
Asian	33	7	4	58	12	22	27	163	0.8%
Black or African Amer.	39	11	7	100	5	31	25	218	1.1%
Hispanic of Any Race	217	109	109	514	120	213	433	1,715	8.7%
Native Hawaii or Pac. Island	7	1	4	11	6	6	5	40	0.2%
Non-Resident Alien	24	18	24	30	70	26	73	265	1.3%
White	3,024	1,150	1,359	3,170	1,402	2,997	2,937	16,039	81.6%
Two or More Races	81	36	9	91	35	89	88	429	2.2%
Unknown	101	112	4	233	1	0	1	452	2.3%
<b>Total</b>	<b>3,540</b>	<b>1,623</b>	<b>1,536</b>	<b>4,250</b>	<b>1,658</b>	<b>3,430</b>	<b>3,610</b>	<b>19,647</b>	<b>100.0%</b>

Source: Wyoming Community College Commission







# SPRING '17 ENROLLMENT REPORT

Table 12: Scope of Non-Credit Service Headcount

College	Continuing Education			Community Service			Total Non-Credit Enrollment		
	Duplicated Headcount	Unduplicated Headcount	Percent Unduplicated	Duplicated Headcount	Unduplicated Headcount	Percent Unduplicated	Duplicated Headcount	Unduplicated Headcount	Percent Unduplicated
Casper	368	288	8.6%	1,578	655	18.1%	1,946	935	13.5%
Central	14	14	0.4%	1,098	880	24.3%	1,112	894	12.9%
Eastern	182	178	5.3%	704	518	14.3%	886	688	10.0%
LCCC	1,579	813	24.2%	845	553	15.3%	2,424	1,354	19.6%
Northwest	741	503	14.9%	314	247	6.8%	1,055	737	10.7%
NWCCD	980	937	27.8%	150	143	4.0%	1,130	1,080	15.6%
Western	732	632	18.8%	874	622	17.2%	1,606	1,223	17.7%
<b>Total</b>	<b>4,596</b>	<b>3,365</b>	<b>100.0%</b>	<b>5,563</b>	<b>3,618</b>	<b>100.0%</b>	<b>10,159</b>	<b>6,911</b>	<b>100.0%</b>

Source: Wyoming Community College Commission



# SPRING '17 ENROLLMENT REPORT

Table 13: Students Auditing Courses

Credit Headcount			FTE		
College	Exclusively Auditing	*Credit Students Auditing	College	Exclusively Auditing	*Credit Students Auditing
Casper	185	118	Casper	40.0	140.7
Central	68	38	Central	12.9	49.8
Eastern	102	46	Eastern	9.7	61.5
LCCC	103	15	LCCC	22.5	16.8
Northwest	48	22	Northwest	4.9	22.2
NWCCD	46	5	NWCCD	7.7	5.0
Western	68	8	Western	11.8	8.2
<b>Total</b>	<b>620</b>	<b>252</b>	<b>Total</b>	<b>109.5</b>	<b>304.1</b>

\* Represents students taking audit hours within regular course schedule  
 Source: Wyoming Community College Commission





# SPRING '17 ENROLLMENT REPORT

Table 14: Alternative Delivery Courses

Enrollment and Credit Hours	Casper	Central	Eastern	LCCC	Northwest	NWCCD	Western	System Total
<b>Concurrent Enrollment Headcount</b>	205	262	588	772	245	469	597	<b>3,138</b>
% of total students enrolled in Concurrent Enrollment credits	5.8%	16.1%	38.3%	18.2%	14.8%	13.7%	16.5%	<b>16.0%</b>
<b>Concurrent Enrollment student credit hours</b>	767.0	987.0	2,727.0	3,126.0	962.0	1,479.0	2,413.0	<b>12,461.0</b>
% of total student credit hours	2.3%	7.6%	22.2%	8.5%	5.4%	5.6%	9.1%	<b>7.5%</b>
<b>Dual Enrollment Headcount</b>	237	124	200	266	147	117	610	<b>1,701</b>
% of total students enrolled in 1+ credits as Dual Enrollment	6.7%	7.6%	13.0%	6.3%	8.9%	3.4%	16.9%	<b>8.7%</b>
<b>Dual Enrollment student credit hours</b>	1,230.0	464.5	775.0	910.0	674.0	637.0	2,627.0	<b>7,317.5</b>
% of total student credit hours	3.6%	3.6%	6.3%	2.5%	3.8%	2.4%	9.9%	<b>4.4%</b>
<b>Remedial Headcount *</b>	411	104	126	510	174	246	393	<b>1,964</b>
% of total students enrolled in 1+ remedial credits	11.6%	6.4%	8.2%	12.0%	10.5%	7.2%	10.9%	<b>10.0%</b>
<b>Remedial student credit hours</b>	1,885.0	312.0	426.0	2,022.0	712.0	1,023.0	1,542.0	<b>7,922.0</b>
% of total student credit hours	5.6%	2.4%	3.5%	5.5%	4.0%	3.9%	5.8%	<b>4.8%</b>

Categories are not mutually exclusive. The same student could be enrolled in more than one of the above categories.

\* Includes sections with Course Levels of DEV, DV, DVST, and REM.



# SPRING '17 ENROLLMENT REPORT

Table 15: Distance Education

Enrollment and Credit Hours	Casper	Central	Eastern	LCCC	Northwest	NWCCD	Western	System Total
Distance Education Headcount *	1,640	819	465	1,741	651	1,074	1,622	8,012
% of total students enrolled in 1+ distance education credits	46.3%	50.5%	30.3%	41.0%	39.3%	31.3%	44.9%	40.8%
Distance Education student credit hours	8,420.0	3,607.0	2,495.0	9,124.0	2,861.0	5,517.0	8,293.0	40,317.0
% of total student credit hours	24.8%	27.7%	20.3%	24.9%	16.0%	20.8%	31.2%	24.2%

\* Sections with Schedule Types of Internet (NET), Interactive Video (IV), HYBD (Hybrid Distance), HN (High School Concurrent Online), and Telecourse (TV).